

# GAUGEMASTER



## Mortimer GWR Station



*This kit is based on the structure still seen today at Mortimer on the Reading to Basingstoke line. Designed by GWR architect Isambard Kingdom Brunel, this building was constructed in 1848.*

**GM430** Mortimer GWR Station Kit

**GM429** Mortimer GWR Spear Station Fencing



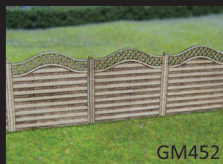
## Laser Cut Kits



GM453



GM451



GM452

*This range of laser cut kits are made from real wood, meaning they are not only very detailed, they are made from the same material as the real world equivalents too. This range comprises of the laser cut shed as well two types of fence to accompany it, or for use on their own.*

**GM451** Wooden Fencing Laser Cut Kit

**GM452** Wooden Fencing with Lattice Top Laser Cut Kit

**GM453** Garden Shed Laser Cut Kit

# GAUGEMASTER

## Also Available In This Series:

- GM9950** **GM** Analogue Control Leaflet
- GM9951** **GM** Collection Leaflet
- GM9952** **GM** DCC Digital Control Leaflet
- GM9953** **GM** Electrics Leaflet
- GM9954** **GM** Highways Leaflet
- GM9955** **GM** Kestrel N Scale Kits Leaflet
- GM9956** **GM** Lighting Leaflet
- GM9957** **GM** Scenics Leaflet
- GM9958** **GM** SEEP Point Control Leaflet
- GM9959** **GM** Structures OO Scale Kits Leaflet
- GM9960** **GM** Tiny Signs Leaflet
- GM9961** **GM** Tools Leaflet
- GM9962** **GM** Track Leaflet

## RIGHT LINES

From GAUGEMASTER.com

For hints and tips on using all our products, visit  
[www.gaugemaster.com/rightlines](http://www.gaugemaster.com/rightlines)  
 and view our fortnightly e-zine packed with  
 information.



Find us on Facebook:

**@Gaugemaster**

Follow us on Twitter:

**@Gaugemaster**

Follow us on Instagram:

**@gaugemaster\_controls**



GM9959 GM Structures Leaflet  
 1st Edition

Gaugemaster Controls Ltd, Gaugemaster House, Ford Road, Arundel, West Sussex, BN18 0BN, United Kingdom  
 Tel - +44 (0) 1903 884321 Fax - +44 (0) 1903 884377 E Mail - [sales@gaugemaster.co.uk](mailto:sales@gaugemaster.co.uk)  
 Web - [www.gaugemaster.com](http://www.gaugemaster.com) - [www.airfix-shop.com](http://www.airfix-shop.com) - [www.scalextric-shop.com](http://www.scalextric-shop.com)

# GAUGEMASTER



## Structures



You'll find a wide selection of building kits in the OO Scale Gaugemaster Structures range - from railway stations and associated buildings, to a gasometer and doctor's surgery. This kits are pre-coloured so they can be completed without any painting, but also look superb with a minimal amount of additional painting and weathering.

**[www.gaugemaster.com](http://www.gaugemaster.com)**





## Railway Kits



**GM401 Station**



**GM402 Signal Box**



**GM403 Footbridge**



**GM404 Single Track Level Crossing**



**GM406 Locomotive Depot**



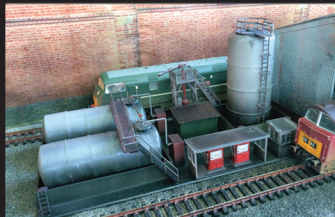
**GM407 2 Carriage Platforms**



**GM414 River Bridge**



**GM418 Loading Crane**



**GM421 Fuelling Point**



**GM460 Unpainted Figures (72)**  
Add some more life to your layout with this pack of 72 unpainted figures

*Future Release: GM427 Grain Silos*  
*Future Release: GM409 Pub/Bistro*



## Urban Kits



**GM405 1960s 3 Bedroom House**



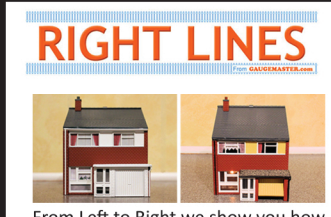
**GM412 Gasometer**



**GM419 Supermarket**



**GM423 Bus Shelters**



From Left to Right we show you how to upgrade the look of the **GM405** 1960's 3 bedroom House with additional painting and detailing.



**GM410 Doctor's Surgery**



**GM417 Building Site Accessories**



**GM422 Site Office**



**GM428 Car Park Barriers**

For hints and tips on building these kits, check out our website at [www.gaugemaster.com/rightlines](http://www.gaugemaster.com/rightlines).



The **GM406 Locomotive Depot** is the perfect kit to modify for alternative uses. These images show how it can be changed to a depot or an hangar.



## Rural Kits



**GM408 Village Stores/Public House**



**GM411 Farmhouse/Holiday Cottage**



**GM413 Nursery**



**GM416 Woodland Play Park**



**GM420 Farm Silos**



**GM424 Service Station**



**GM425 Wind Farm**



**GM426 Playground**

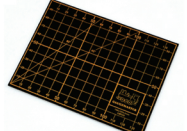
We recommend Faller Expert or Super Expert Glue for construction of these kits. For additional painting we would recommend Revell or Humbrol Paints. If you are new to plastic kit building take a look at the handy tools below.



**GM591 Plastic Kit Modelling Set**



**GM593 Plastic Kit Sprue Shaver**



**GM599 A6 Cutting Mat**

\* Pre-Production images shown. Kit contents subject to change