

**Contents.** The kit comprises SHEET 1 & SHEET 2, the illustrated SUPERQUICK header card, ACCESSORIES CARD, an acrylic glazing sheet, this ASSEMBLY INSTRUCTIONS sheet and a CUSTOMER REPORT card.

**Tools.** A sharp modelling knife and a steel rule are essential. Bulldog clips, a few rubber bands and 'Sellotape' might be useful to secure parts of the kit while glue is drying.

**Glues.** Most liquid glues are suitable. PVA glue is recommended, it becomes matte and almost transparent when dry, although in cold conditions the glue tends to dry white. A solvent glue like 'EvoStick' or 'UHU' is also recommended as it is quick to dry but can present problems when touching up model with water based paint.

For gluing areas of paper, such as lining pieces, it is recommended that PVA be thinned or that a spray or a spreadable solvent glue is used.

**Card-mounted components.** Separate the parts only when called for by nicking with the knife at uncut points.

**Scoring.** Red arrows signal a fold back. Blue arrows signal a fold forward. Where the cutter lines are marked with arrows they are scored (i.e. only partly cut through). Here the component is intended to be bent or folded.

Sometimes additional scoring with the knife may be necessary, so that the board bends at the fold line without too much resistance. If the fold line is cut through, a

repair can be made by gluing a thin paper strip to the back.

When folding a piece forward on a perforated cut it is important to score lightly along the perforation on the reverse of the card.

**Waste.** Waste card is kept to a minimum & is indicated by the symbol

**Windows.** The Glazing Sheet has 19 window pieces divided by dotted lines. There are two methods of glazing, which can be combined for a really durable result:

(1) Lay down the window piece face up. Apply glue to the back of the wall around the window aperture and the lower the wall onto the window piece. This method is easier for small windows and permits

adjustment - correct the alignment before the glue sets and wipe excess glue from the window surface with a damp paintbrush or tissue.

(2) Apply narrow strips of 'Sellotape' along two sides of the unprinted back of the window piece. Lay the window piece down as before and lower the wall onto the partly exposed 'Sellotape'. When the window is attached to the wall, rub down the tape and apply further strips to the remaining two sides of the window piece.

**Finishing.** The appearance of the completed model will be greatly improved if all exposed edges are touched up with paint. It is important that there is no glue on exposed edges.

## SECTION 1 - 'SUPERMARKET' OR 'FAMILY GROCERS'

- 1** First identify on SHEET 1 the four main walls shown as a small outline drawing (Fig. 1a) noting the red arrow scored lines. Make cuts to the edge of the board to complete the TABS along the bottom of the WALLS and remove the whole part as one piece. Clear the window apertures, setting aside the two BRACKETS. From the transparent glazing material, cut away the appropriate windows along the dotted lines. All the windows for this model will be found printed in a buff colour on the window chart. The small square window and one of the other small ones will be used for the ENTRANCE later. Starting with one of the small windows, glue around the edges of the window on the unprinted side and place on a table. Lower the back side of the window aperture on to the glazing making sure it fits in place and press down. Repeat with the remaining windows.

Bend back and glue down for double thickness all TABS with the exception of the BACK WALL TOP TAB. This has to be set at right angles to the wall surface and secured with a BRACKET glued in position below the dotted line (Fig. 1b). Place the walls printed side down and raise the BACK WALL at right angles, gluing the FLOOR, taken from SHEET 2, in place positioned on the edges of the TABS (Fig. 1b). Another BRACKET should be fixed into the corner where shown. Take the

WINDOW DISPLAY BASE from SHEET 2 and cut out the DISPLAY from the 'accessories' card, scoring the red and blue arrow lines and bending the TABS backward and the SIDES forward. Glue the TABS to the BASE where shown and fix the completed DISPLAY behind the LOWER FRONT WALL, positioned on the TAB edge and set centrally (Fig. 1b).

- 2** Bend the walls round to their final shape and glue the back corner joint, flush at the bottom, noting that the BACK WALL overlaps the SIDE WALL edge. Run glue along the remaining FLOOR side where it now lies on its TAB. Complete this part of the model by gluing the LOWER FRONT WALL joint, the front overlapping the side as before. Add the COPING, thus filling the gap where the upper half of the front wall overhangs the lower half. With the model placed on its side, take the RIDGE BOARD, bend to an angle along the scored line and glue it to span the two side walls, set inside and just below the points of the pitched sides (Fig. 2a).

Remove the three WALLS and two TABS comprising the ENTRANCE. After glazing the windows attach the CANOPY SUPPORT and CANOPY SIDE where marked. Press the 'hinged' DOORS inwards, bend to shape and glue its FLOOR just clear of the bottom edges of these doors. Turn the TABS inwards at right angles and glue the CEILING to their under sides, noting that it projects beyond the walls (Fig. 2b). Fix the ENTRANCE RIDGE BOARD along the dotted black line. Locate the CEILING projection in the wall slot and glue it in place, fixing its ROOF when set. Add the BARGE BOARD and CANOPY ROOF.

- 3** Glue the SUPERMARKET ROOF in place in two stages starting with the front half, checking that the side overlap is parallel. Add the GABLE RIDGE BOARD and glue a GABLE ROOF in place followed by its BARGE BOARD (Fig. 3a). Prepare the RIDGE TILES as follows. Cut through the short lines marked Z. Turn the card over and join these cuts with a pencil line. Hold the card against the light to check that these lines are running accurately down the middle of the tiles before scoring the lines with a blunt knife. Turn the card over again, bend the tiles double, crease them well, cut away the waste and separate. Make up the CHIMNEY STACK using the same method of scoring, add the CHIMNEY TOP and glue the stack in place. Add the RIDGE TILES. Cut out the CHIMNEY POTS. Take one, dampen it and roll it tightly between finger and thumb until a solid rod is formed. Glue up the end edge and with rolling strokes of the knife, cut in half to make two pots. Fix in place with a generous amount of glue. Prepare the GUTTERS by making light bending cuts along the red arrow lines. Bend right back along these lines before opening flat again and cutting out. Bend over and glue down for double thickness the two solid black sections leaving the TAB to be bent up and glued to the underside of the ROOF (Fig. 3b). Add the PAVING, set under the front wall. Make up the STEPS (Fig. 3c). To complete the model add the chosen NAMEBOARD and SUNBLIND.

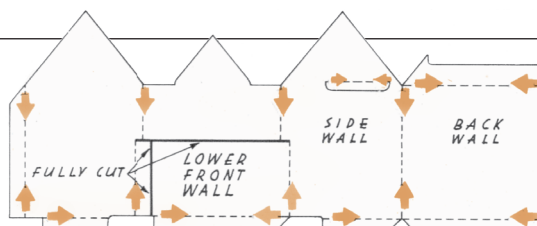


Fig. 1a

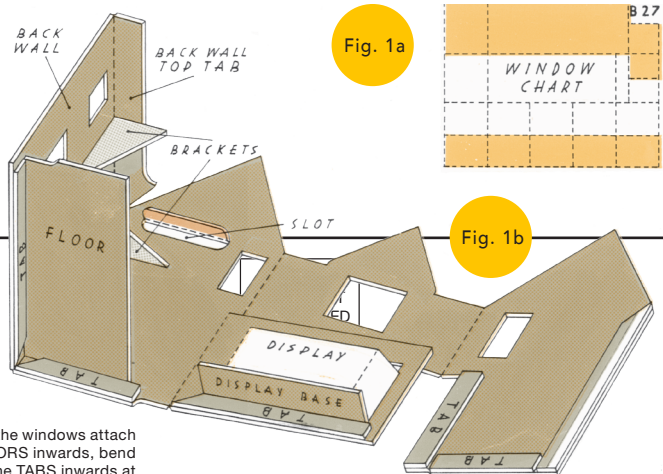


Fig. 1b

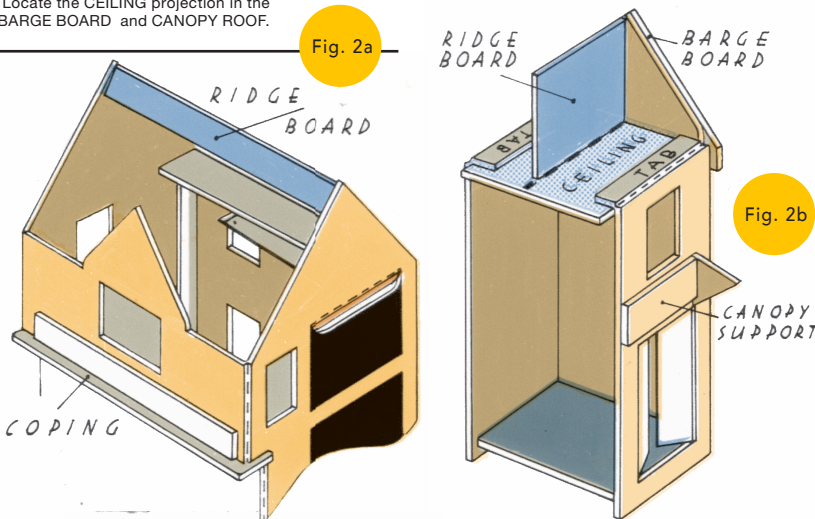


Fig. 2a

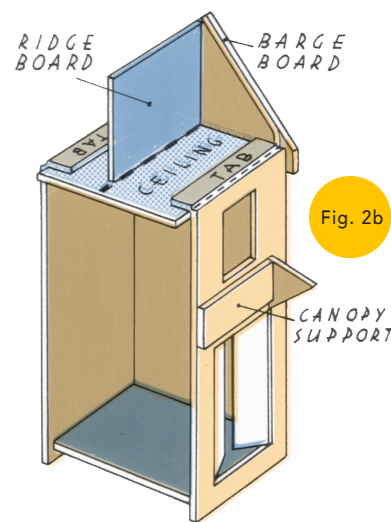


Fig. 2b

## SECTION 2 - 'ANTIQUES' OR 'CHINA & GLASS' SHOP

The assembly methods are similar but for the following differences. The walls are formed into their box shape by a joint made down the middle of the BACK WALL. When the TABS have been glued down, the BACK WALL JOINING PIECE is fixed to the inside surface of one half of the BACK WALL along the dotted line. The two BACK WALL TOP TABS are each fixed with a BRACKET placed below the dotted line. The two BACK WALL TOP TABS are each fixed with a BRACKET placed below the dotted lines. The FLOOR is inserted into the same corner as before but glued to the SIDE WALL and only one half of the BACK WALL at this stage. Lastly the COPING is shaped to form a shallow roof above the entrance door.

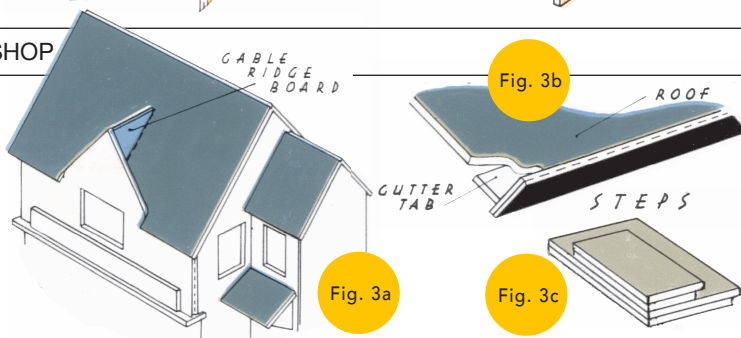


Fig. 3a

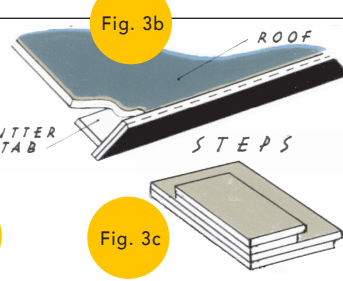


Fig. 3b

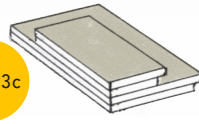


Fig. 3c