

PN167 N Scale Town End Cottage

INSTRUCTIONS GLUES

UHU Solvent Free All Purpose Adhesive Glue

Works superbly well in our fine glue applicators. Dries quickly, but allows time for positioning of kit parts as described further on in the instructions.

Also from Deluxe Materials
Speedbond A fast drying PVA.
Rocket Card Glue An instant card glue

GETTING STARTED

1 EXTRACTING COMPONENTS FROM THE BASE SHEETS.

To stop the components from falling off the sheets, they are held secure with score lines. These are cuts that only go about 75% of the way through the card. To release them run the point of your knife along these score lines and they will come seamlessly away. These score lines are marked with blue arrows: **WARNING**, Cut with care using a knife that is not too sharp, this will reduce the risk of the blade running off the score and cutting the components. The laser cut components have small 'pips' holding them in place run your knife along the cut lines to release these components.

2 MAKE YOUR 'BUILDERS YARD'.

As you extract the components from the base sheets they need to be kept away from your working area on a thick piece of card or a tray until needed. Keep the components organised to which part of the building they belong to. The smaller parts are best left on the sheet until needed.

CHECK LIST

This kit should contain the following:

- 2 x **PRINTED SHEET**. Kit parts.
- 1 x **GREY SHEET**. Strengtheners parts.
- 1 x **BROWN SHEET**. Laser cut parts.
- 1 x **GLAZING SHEET**. Windows.
- 1 x **INSTRUCTION BOOKLET**.
- 1 x **RIDGE TILES SHEET**.

READ THROUGH ALL THE INSTRUCTIONS BEFORE YOU START.

This is a complex kit that requires particular attention to detail, so proceed with care!

To construct this kit you will need the following:

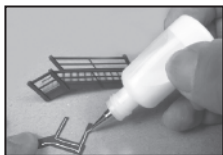
- 1. A modellers knife.
- 2. A pair of sharp scissors.
- 3. A steel ruler.
- 4. Glue - See glues.
- 5. Ultra Fine Tip Glue Applicator, see below.
- 6. A cutting surface - a sheet of card or cutting mat.
- 7. Fine point tweezers.
- 8. Water colour paints and a very fine brush for painting edges and corners.

METCALFE Ultra Fine Glue Tip Applicators.

These bottles are essential for gluing the smaller components in this kit.



Tiny strips and spots of glue can be accurately laid down with precision.

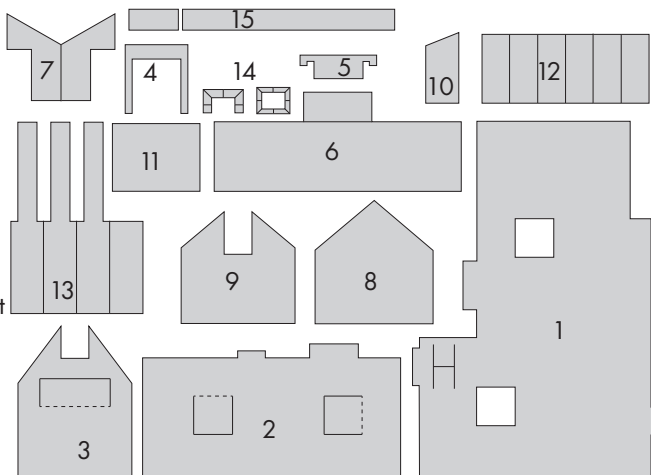


3 **STRENGTHENERS & LASER CUT COMPONENTS.**

To help identify the strengtheners, below is a key to the components.

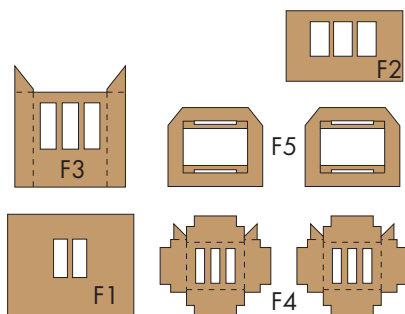
Strengtheners Components Key.

- 1 - Main House Base
- 2 - Main House Inner Former
- 3 - Chimney Wall Support
- 4 - Bay Window Frame
- 5 - Bay Window Former
- 6 - Rear Wall Support
- 7 - Front Porch Side Door (x2)
- 8 - Side Extension Wall Support
- 9 - Extension Chimney Wall Support
- 10 - Rear Side Wall Support
- 11 - Rear Side Roof Support
- 12 - Chimney Spacers (2 x 3)
- 13 - Side Chimney Spacers (x3 +1)
- 14 - Side Chimney Stringcourse (x2)
- 15 - Garden Wall (1 short, 1 long)



Brown Laser Cut Components Key.

- F1 - Side Extension Frame
- F2 - Porch Window Frame
- F3 - Bay Window Frame
- F4 - Dormer Window Frames (x2)
- F5 - Dormer Window Formers (x2)



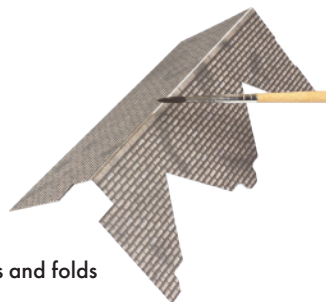
4 **PAINTING THE EDGES**

The components in this kit have white edges and fold lines that will need to be painted. All you need is a simple set of water colour paints and a fine brush, like this 'Reeves' watercolours.

Mix your colour with lots and lots of water, approx. 1 part paint to 5 parts water or more. TEST ON WASTE CARD FIRST UNTIL YOU HAVE THE CORRECT SHADE & COLOUR.



Paint all the exposed edges and folds on the components.

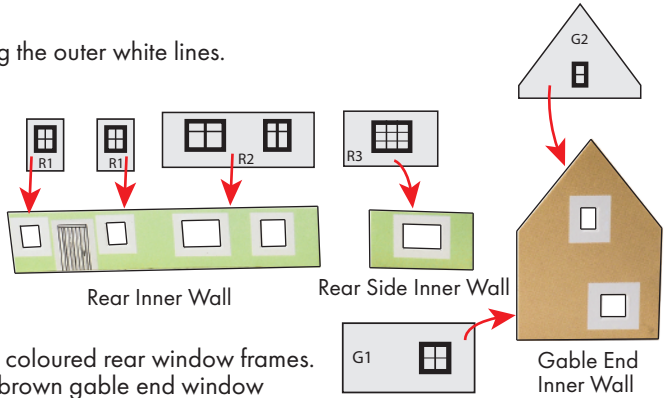


Fold the edges of the card back fully and gently run the point of your brush along the exposed white card. Only tiny amounts of paint on your brush. It's better to have to go over it a few times than to flood it with paint. Before the paint dries, run your finger along the edge to rub the colour into the absorbent white card. Then wipe away any paint that has run onto the printed surface before it dries. Remember, you only need to just slightly tint the card with a little colour. DON'T paint a thick solid line down the edges, you will only make it look worse.

5 WINDOWS

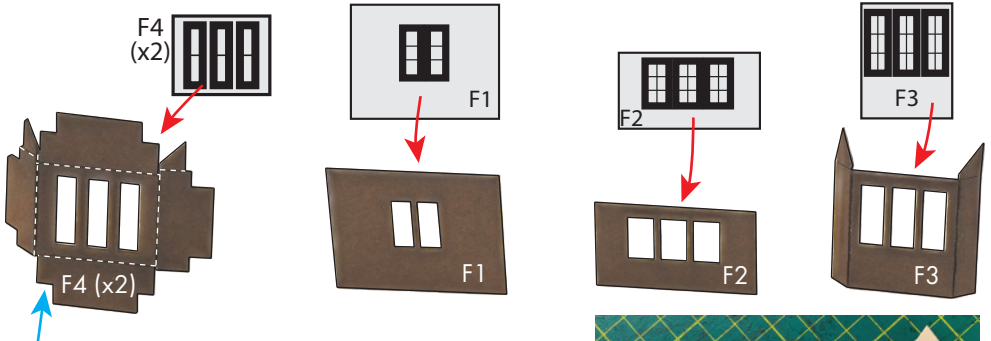
Carefully cut out the glazing along the outer white lines.

Fix each window to the corresponding window frame openings with the matt printed side facing through the openings. Make sure the window is centred correctly within the frame. Use only tiny drops of glue and be careful to avoid getting glue onto the visible window.



The 'R' windows are for the green coloured rear window frames. The 'G' windows are for the light brown gable end window frames.

The 'F' windows are for the dark brown laser cut window frames.



Be very careful with the F4 windows the glue area is very small, also make sure that each of the folds of the frame are not inhibited by the outer edge of the glazing. See Fig.6 on page 7.

Test the fit before applying glue.

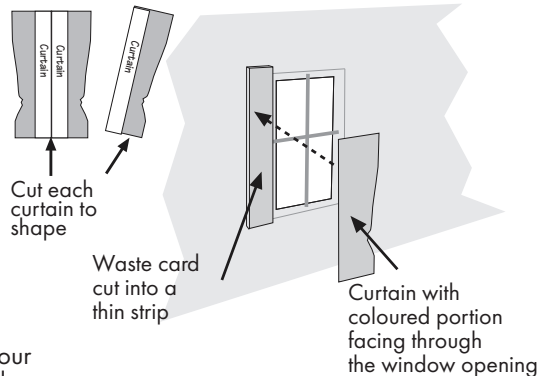


Like so.

If you wish to add curtains, now is the time to do so. See back page for curtains.

To fit curtains fix a small strip of waste card to each side of the window, then glue the curtain to the waste card so that it shows through the window (the waste card will space the curtain back from the window a little giving a greater effect of depth).

For extra curtains, visit this product on our website www.metcalfemodels.com



Place the completed windows to one side in your builders yard until they are needed in the build.

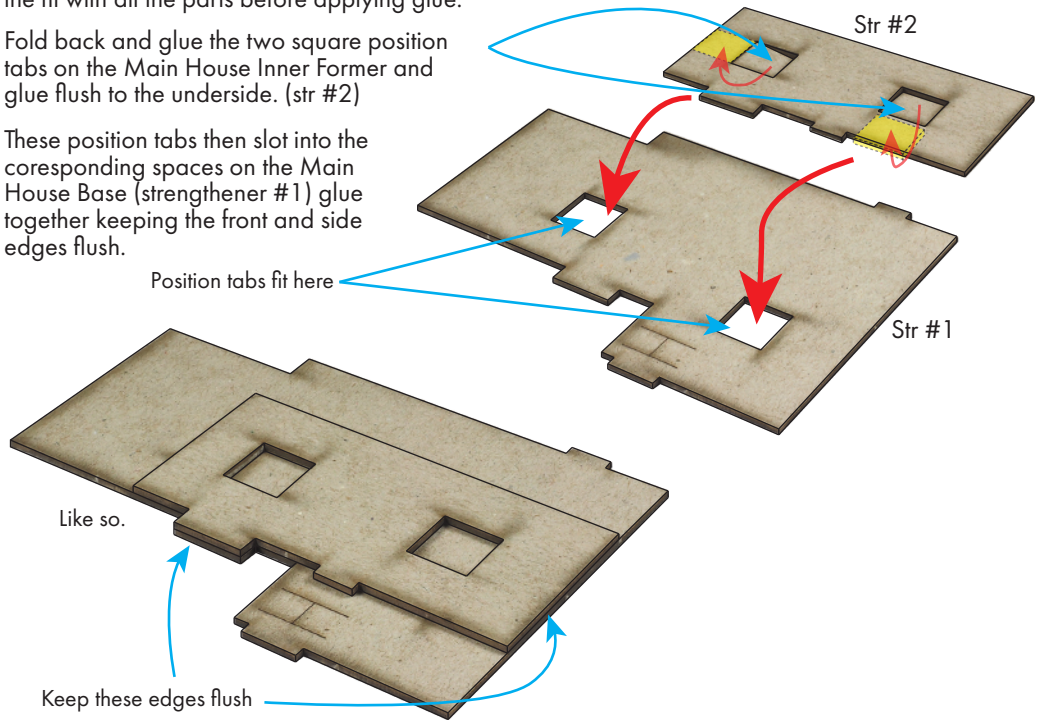
LETS START TO BUILD!

Part 1. THE MAIN HOUSE

1. First thing to do is to build the foundations. Test the fit with all the parts before applying glue.

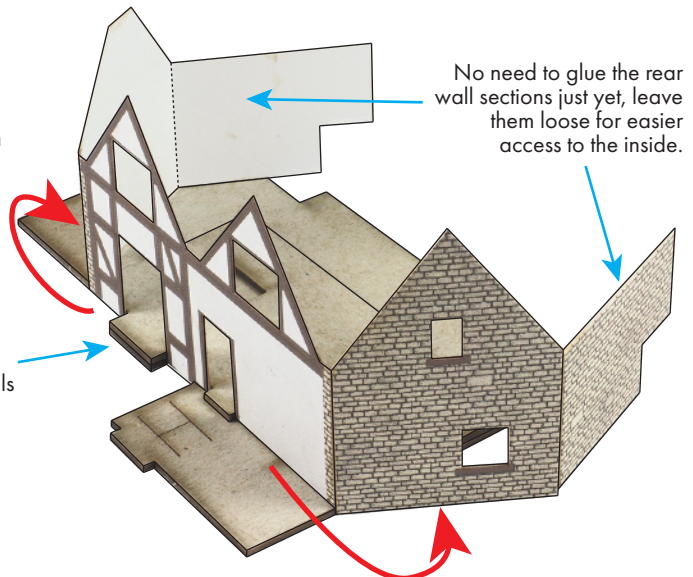
Fold back and glue the two square position tabs on the Main House Inner Former and glue flush to the underside. (str #2)

These position tabs then slot into the corresponding spaces on the Main House Base (strengtheners #1) glue together keeping the front and side edges flush.



2. Now onto the walls, wrap the Main House Walls around the inner former with the front and gable end overlapping the main base edge. Only glue the front and sides to the base at this point.

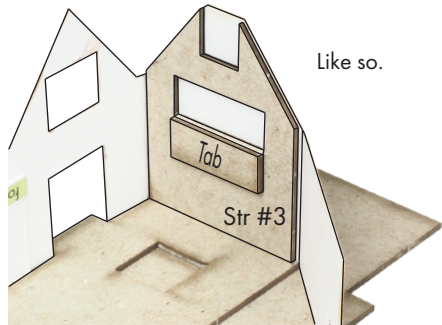
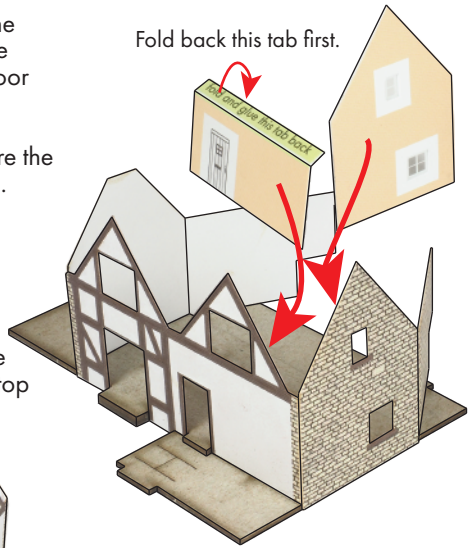
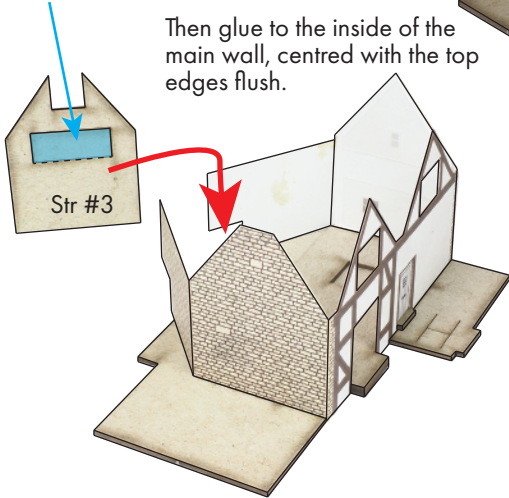
Start with the bay window opening 'straddling' the step, then fold around with the walls pressed against the inner former.



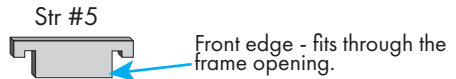
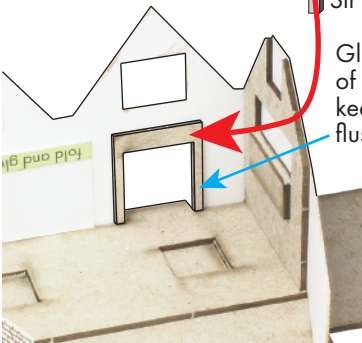
3. Now add the inner walls. Fold back and glue the green tab on the front door inner wall, then add the inner wall to the back of the Main walls with the door centred through the opening.

Then add the Gable End Inner Wall, carefully centre the windows with the openings on the outer Main wall.

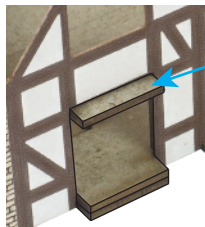
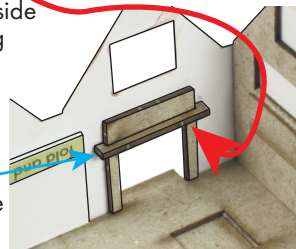
Fold back the tab on Strengthenner #3 (Chimney wall support)



4. Bay Window. Find the two small strengtheners (Str #4 & #5) that will form the frame for the window.



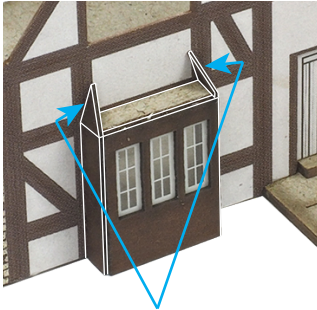
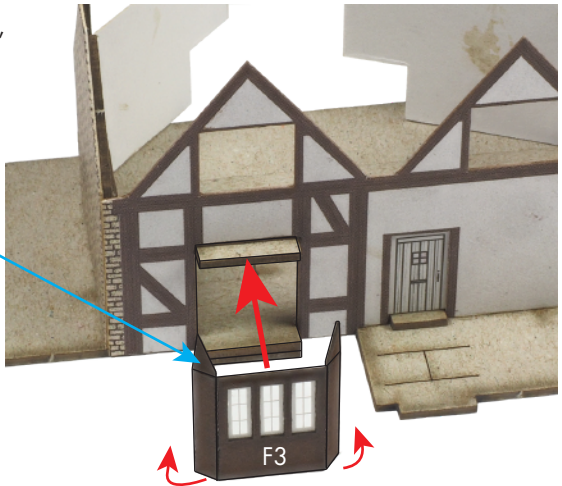
Str #5 former then slots through the opening flush to the top of the frame.



Viewed from the front you will see the former extends from the outer wall the same distance as the base.

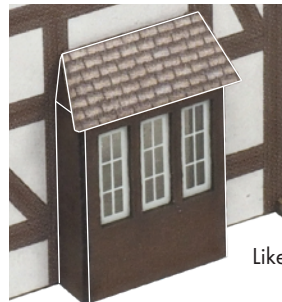
Now add the Bay Window (F3) This wraps around the base and former 'tabs' and flush to the Main wall. Keep the bottom edges flush.

Leave the two little triangle roof supports at the top free from glue until you apply the roof section.



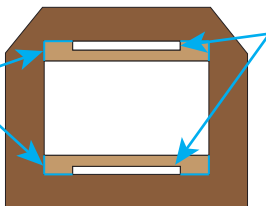
Now slightly angle the two triangular roof supports so that they follow the tapered edge of the Bay roof section.

Test the fit first then glue the Bay roof into place.



5. While we still have easy access to the inners of the building let's get the fiddly Upper Bay windows into place. I advise using a good spotlight to help illuminate the dark brown of the laser cut card. First off find the two dark brown laser cut Dormer formers (F5)

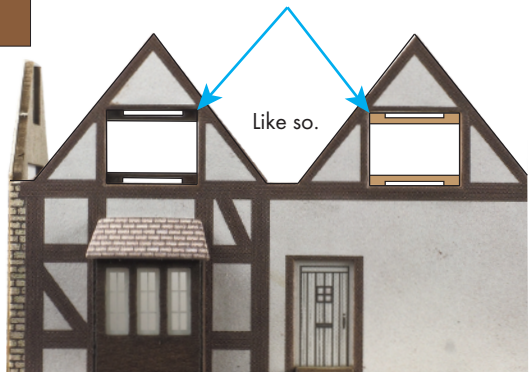
Note the scorelines (shown here in blue) these will help you align the area (shown here in Light Brown) with the openings in the main wall.



These two slots need to be flush with the top and bottom edge of the Main wall openings.

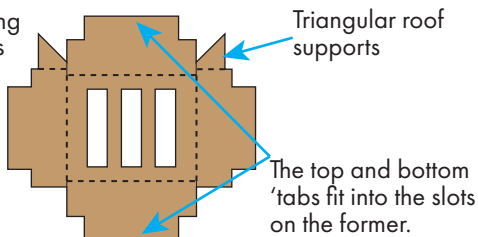
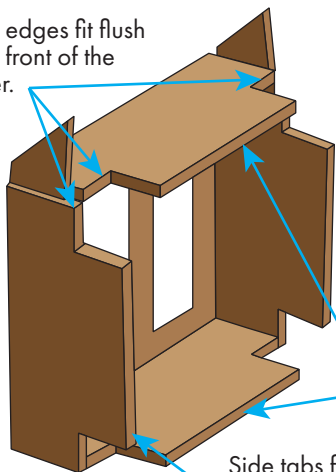
Test the fit to the inside of the main wall, centre through the openings, then position using a glue that leaves you time for position adjustments.

Allow a few minutes for the frames to set in place before moving on to fit the two Dormer window Frames.



6. Now to the window frames (F4). Before applying any glue test the fit so it's clear how these windows fit into place.

These edges fit flush to the front of the former.



Triangular roof supports

The top and bottom 'tabs' fit into the slots on the former.

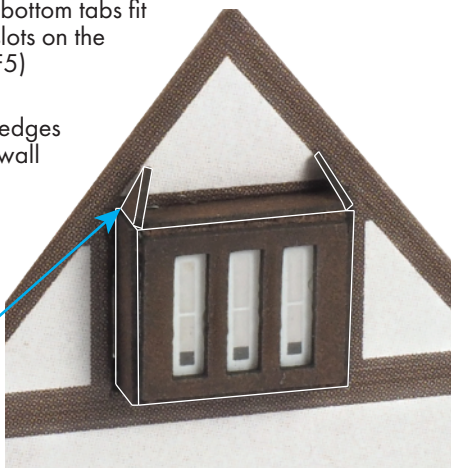
Fold along the scorelines to create a box. As with the bay window leave the two little triangular roof supports alone for the time being.

Top and bottom tabs fit into the slots on the former (F5)

Side tabs fit flush to the edges of the former and main wall opening.

Take your time and test the fit a couple of times before applying a small amount of glue to hold in place.

Angle the triangular roof supports in slightly to mirror the angle of the diagonal timbers.

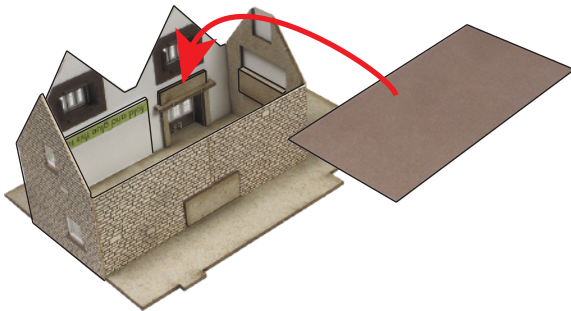
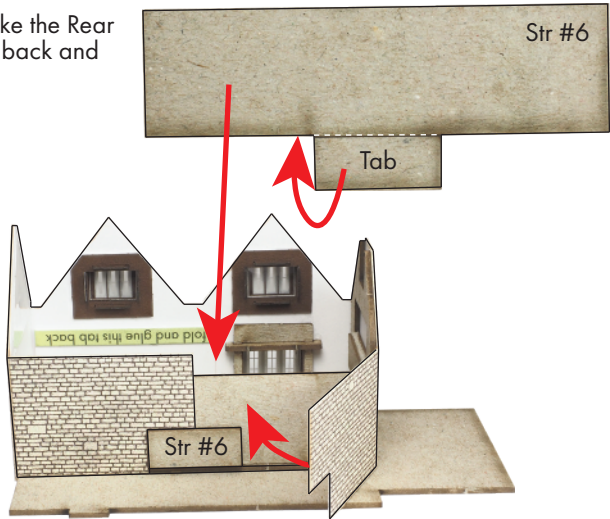


Finally add the two upper bay roof sections centred onto the roof supports and frame.

Fiddly bit over, time for a brew.

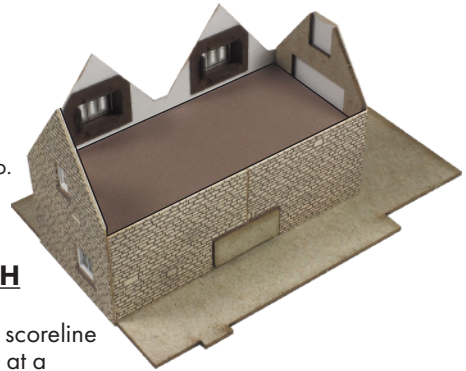
7. Now to finish the main building. Take the Rear Wall Support (Strengthenener #6) Fold back and glue the centre tab.

Then position the support flush to the house base with the tab facing to the rear. Fold the rear walls flush to the support making sure the support tab fits through the cut away sections on the rear walls.



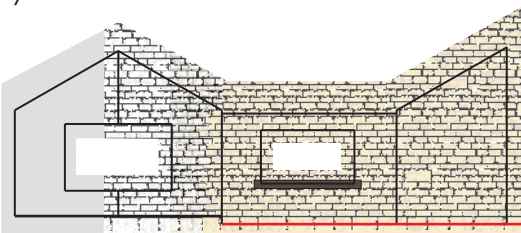
8. Now drop in the Inner Floor, this sits on top of the door frame (green tab) the bay window former, the chimney support tab and the rear wall support. This is a snug fit so glue is optional.

Like so.

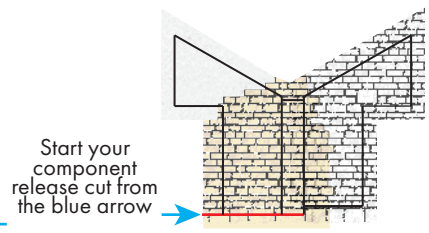


Part 2. THE HOUSE EXTENSIONS & PORCH

9. Now onto the front Porch. Shown below in red is the scoreline to carefully cut along (on Sheet B) Note the scoreline is at a different height to the precut line. So be sure to start the release cut from the blue arrow side to avoid cutting into the component by mistake.



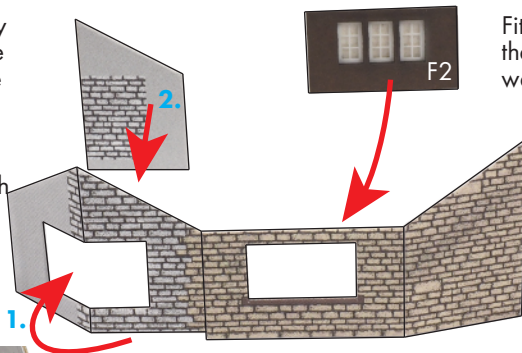
Porch Walls



Porch Side Wall

1. Fold and glue the grey section to the back of the white stone wall to make double thickness.

2. Then glue the Alcove Wall flush to the rear with the stonework facing through the alcove.



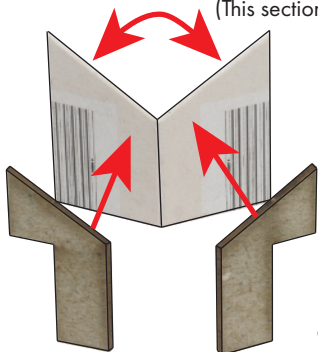
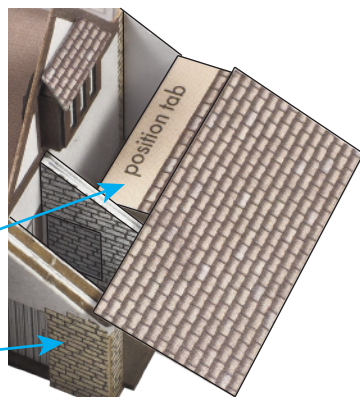
Fit window F2 centred to the opening on the Porch walls



Then fit the porch walls to the main house front. The white stonework fits on top of the base with the brown stonework fitting flush to the edge of the house base.

Use the position tab on the Porch Roof to get the correct spacing between the two walls, but do not fix the roof just yet.

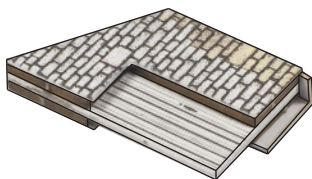
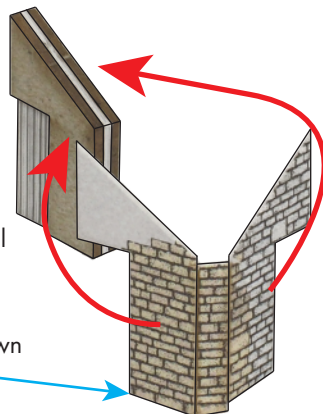
(This section gets added later - see below)



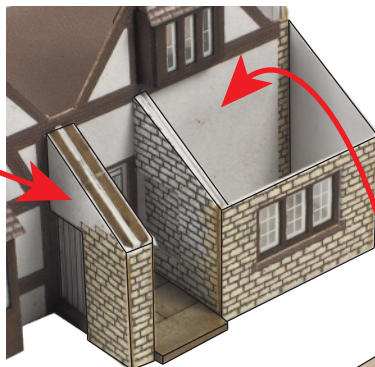
10. Fold back and glue the Porch Side door, then add Strengtheners #7's to either side framing the door. Keep all the edges flush.

Now wrap the Porch side wall around the inner block again keeping edges flush.

The bottom section of the brown outer wall will overhang the inner block.

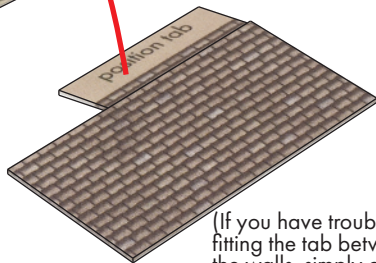


Now fit the Porch side wall into place with the overhang wrapping around the edge of the base and the door frame flush to the house wall.



Fit the roof into place by sliding the position tab between the Porch walls and flush against the house walls.

Test the fit then apply glue to fix in place.

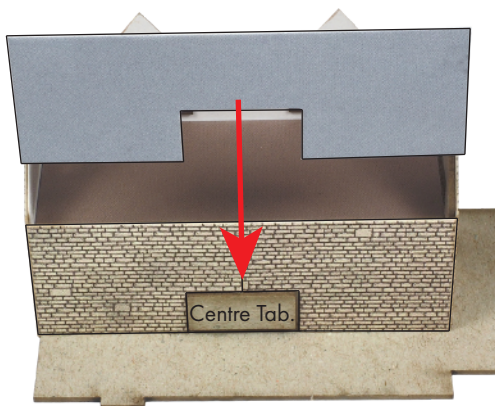


(If you have trouble fitting the tab between the walls, simply cut free the tab.)

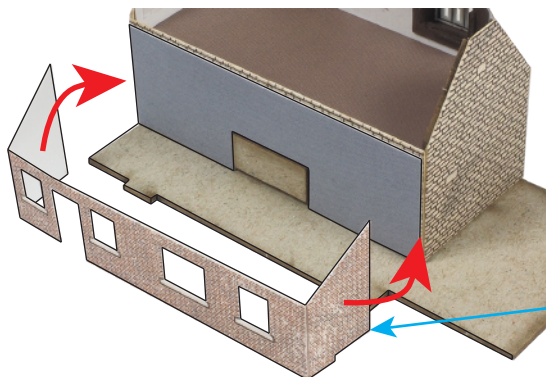


Like so.

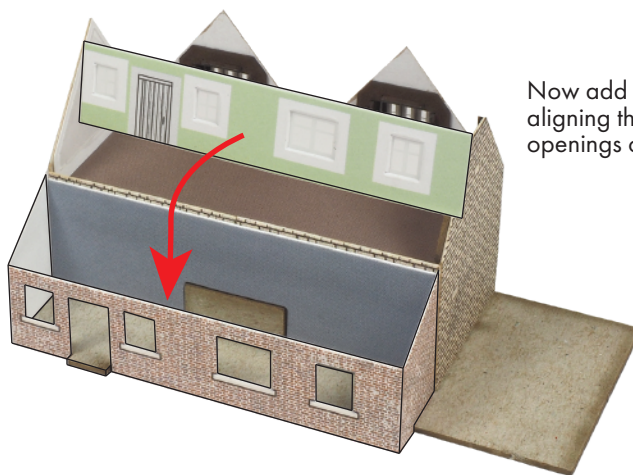
11. Now to the rear of the house. Fix the rear wall former to the back of the building, then cut out section fitting around the centre tab on the rear wall former (Strengtheners #6)



Wrap the Rear wall around the base and flush to the sides of the blue rear wall former.

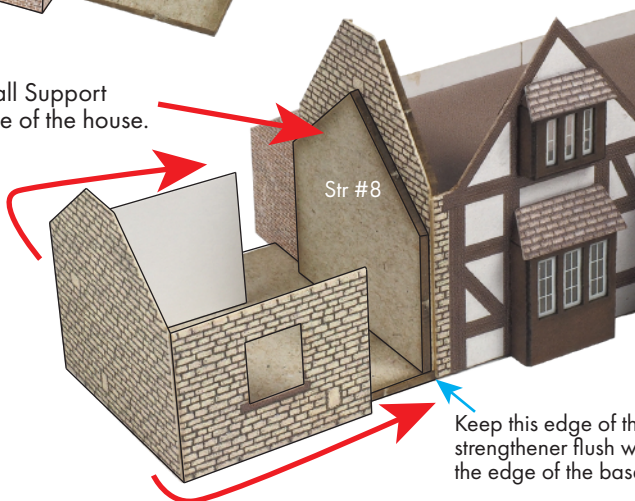


This section of the wall rests on top of the house base.

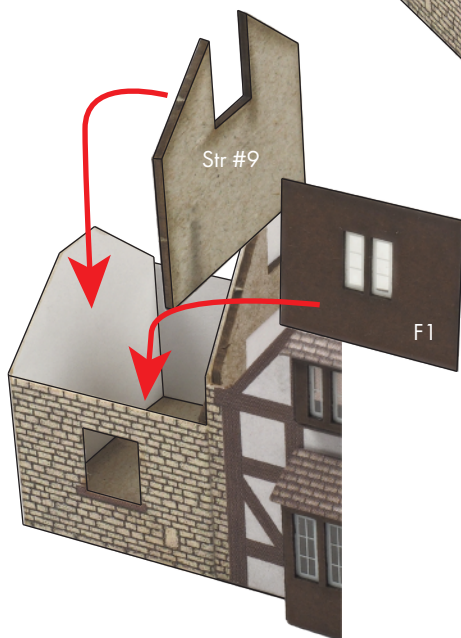


Now add the Rear Inner Wall carefully aligning the windows and door to the openings on the outer wall.

12. First add the Side Extension Wall Support (strengtheners #8) centred to the side of the house.



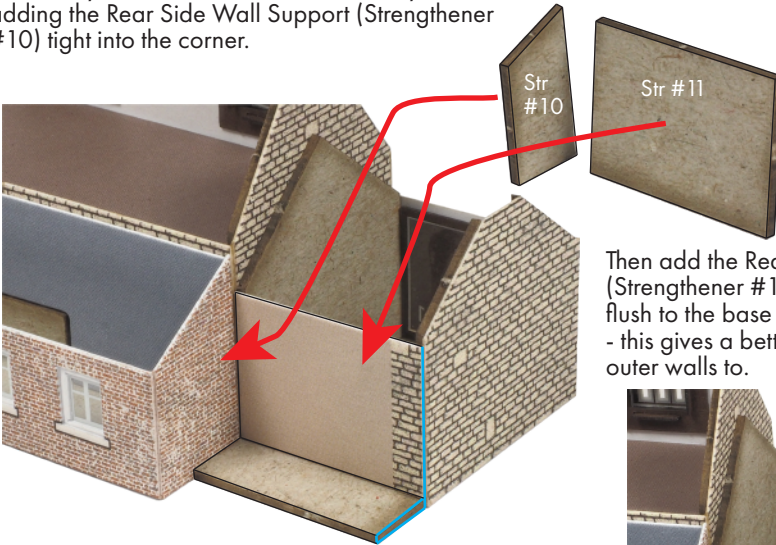
Then wrap the Side Extension Walls around the base and flush to the sides of the strengthener.



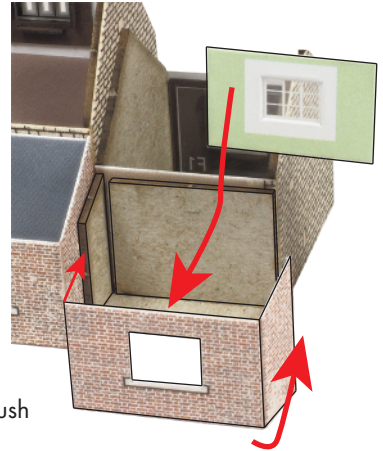
Add the Extension Chimney wall support (strengtheners #9) to the gable end of the extension keeping the top edges flush with the outer wall.

Also add the Side Extension Window Frame (F1) carefully align and centre the window with the opening on the outer wall.

13. Finally the last little extension. Start by adding the Rear Side Wall Support (Strengtheners #10) tight into the corner.

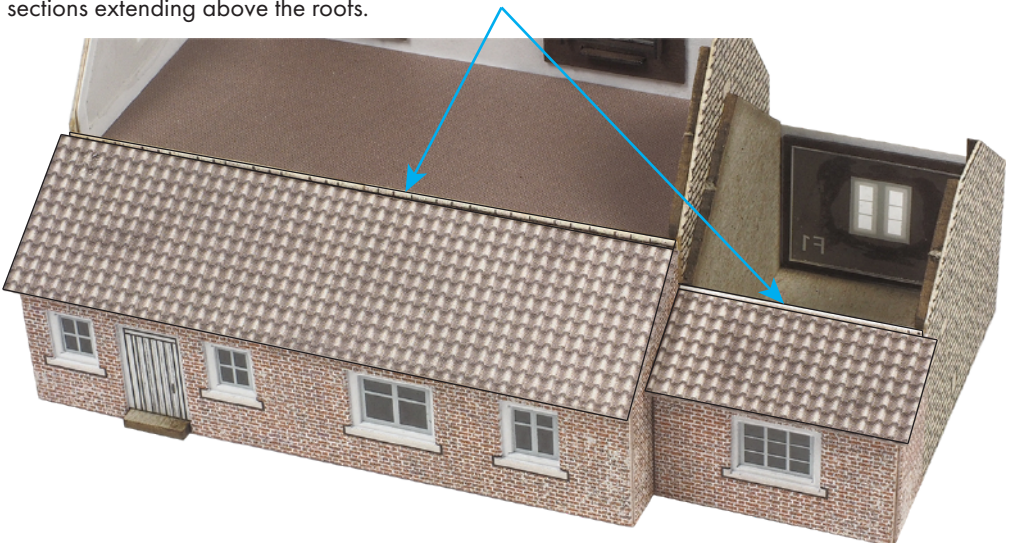


Then add the Rear Side Roof Support (Strengtheners #11) keep the right side flush to the base edge (shown in blue) - this gives a better edge to fix the outer walls to.

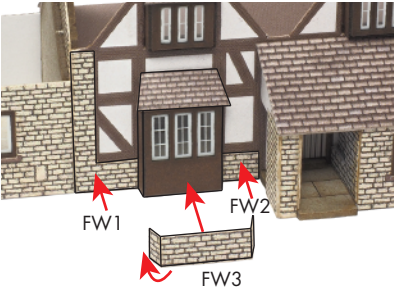


Then add the Rear Side Window Frame, centre the window through the opening on the Rear Side Wall, then wrap the side wall around the base and flush to the two supporting strengtheners. (Str #10 & Str #11)

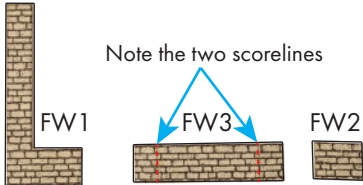
14. Add the two Rear Roofs. Make sure that both roofs fit flush up **against the rear walls** not on top of them. Test the fit first to be sure that there is a slight lip of the rear wall sections extending above the roofs.



15. Before we move onto the main roof and chimneys find the three Front wall sections - FW1, FW2 and FW3.



Fit FW1 and FW2 to either side of the Bay Window, keeping the bottom edges flush with the base of the walls and tight against the sides of the Bay Window.

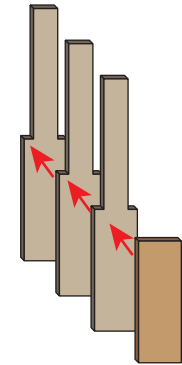


Then fit the FW3 section around the base of the Bay Window.

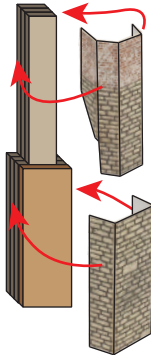


Part 3. CHIMNEYS AND THE MAIN ROOF

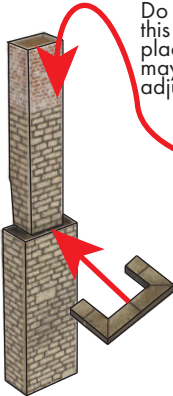
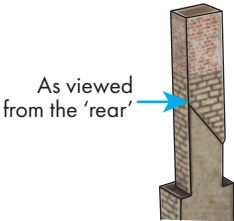
16. Start with the Side Chimney.



1. Combine the three long Side Chimney Spacers (Str #13) to create a solid block all edges flush. Then add the short spacer to the bottom half - this is the front.



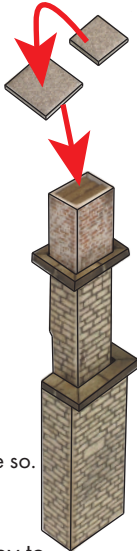
2. Then wrap the Side Chimney lower and upper walls around each section. Note the upper section partly encompasses the rear of the chimney.



Do Not glue this section in place, you may have to adjust it later.

3. Then add the two Chimney Stringcourses (Str #14). The open section fits along the space between the lower and upper walls. The encircled section fits over the top of the upper chimney and rests where the brick meets the stonework. NOTE: Leave this 'unglued' just in case you need to adjust it's position when attaching to the main house.

4. Finally add the Chimney capping. Use the smaller base and top capping for the side chimney, glue the top capping centred onto the base. Then add to the top of the chimney.

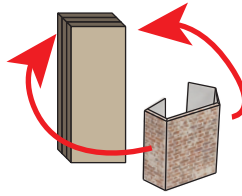
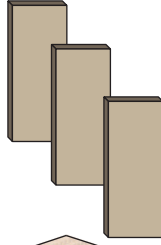


Like so.

Put the completed side chimney to one side until needed.

17. The Side and Main chimneys go together the same way.

Combine three of the Chimney Spacers (strengtheners #12) in a solid block keeping all edges flush.

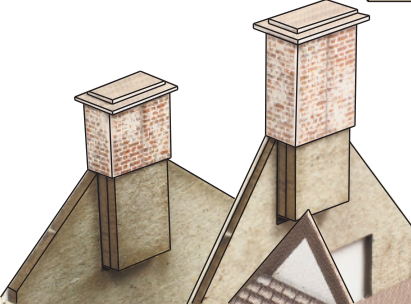


Then wrap the main/extension chimney walls around, keeping the top edges flush.



Add the smaller top chimney capping to the centre of the base capping, then to the chimney stack.

Now add the two chimneys to the main building. The shorter one is the Extension and the larger is the main house chimney. Fit the chimneys into the slots chimney wall supports, and glue into place.



18. Be sure to test the fit of the roofs before applying glue. The roofs need to be wriggled into position, so a little time practicing getting them into place is essential.

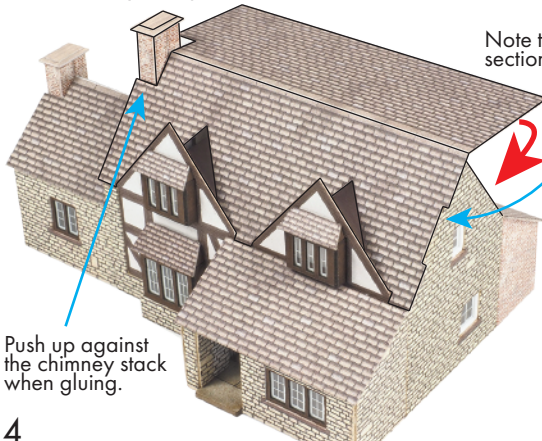
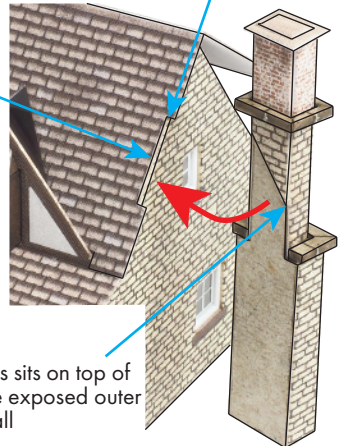
Start with the Side Extension Roof, this one is fairly straightforward, keep the roof flat to get over the chimney then fold, gently pushing up so that the roof fits snug against the Chimney stack.

The Main roof might need a little tweaking to get to fit correctly take careful note of the small cutaway section along the gable end. The edge of this cutaway section needs to be flush with the inner wall. So the outer wall layer of card is showing. This is where the side chimney rests upon. Check the fit carefully as the gable wall can bow slightly inwards. If need be carefully deepen the roof section with your knife. Test the fit with the side chimney then glue the roof and side chimney into place.



Outer wall layer of card to fit to the side chimney

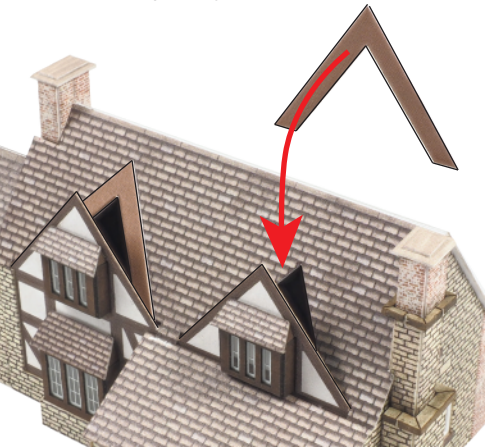
Note the cutaway section



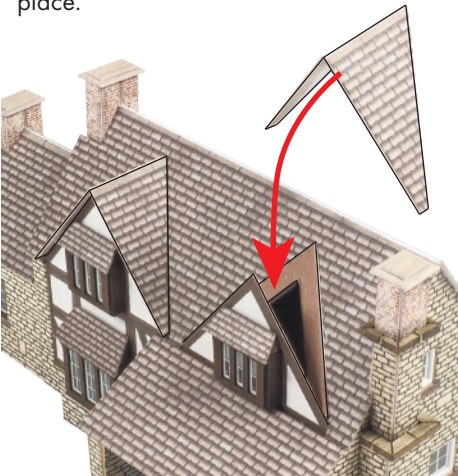
Push up against the chimney stack when gluing.

This sits on top of the exposed outer wall

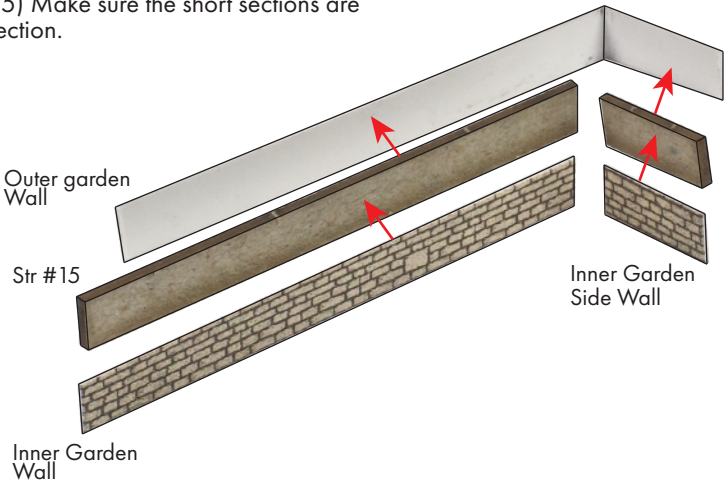
19. Lastly the dormer roofs. Start with the two Dormer Roof Formers, fix to the main roof with the inner edges flush with the openings on the main roof.



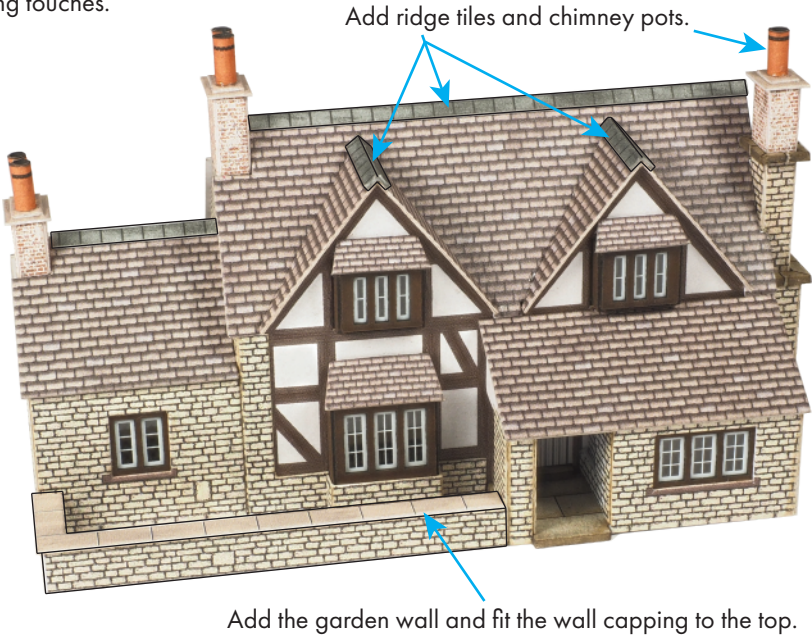
Now add the Dormer Roofs. These sit flush against the former, test the fit first and paint the exposed overhang before gluing into place.



20. The garden wall. Fit the long sections first, then the short sections. The Outer and Inner walls sandwiching the Grey strengthener sections. (Str #15) Make sure the short sections are at a right angle to the long section.



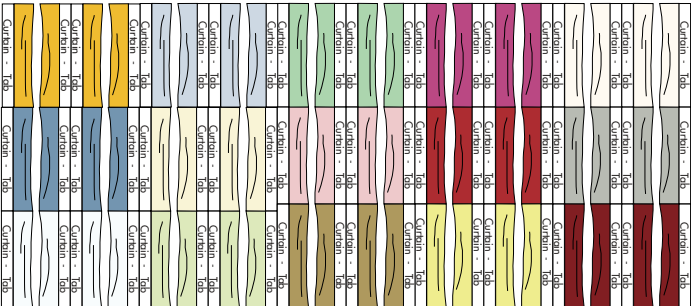
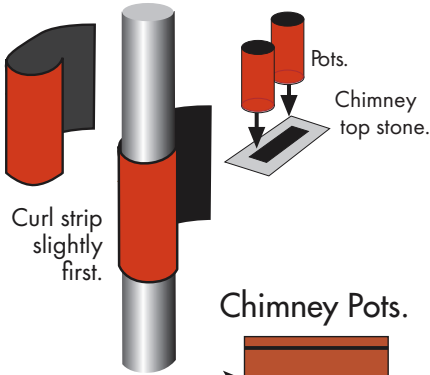
21. Finishing touches.



CHIMNEY POTS

Cut into strips the chimney pots, then roll tightly around a nail or rod approximately 2mm in diameter
Then unroll the end enough to smear with a little glue, then roll back up and hold tight until set. To finish dab a little paint on top of the pot.

Please Note: once you have perfected the art of rolling your own chimney pots you will soon realise that they are extremely realistic and finish the model nicely. So please be patient and keep trying, the chimney pots do make all the difference.
You can download more chimney pot sheets from our website: www.metcalfemodels.com - navigate to this product and click the downloads tab.
There will be a pdf you can download and print.



Curtains for inside the windows.

