

The Country Fire Station - ASSEMBLY INSTRUCTIONS

Contents. The kit comprises SHEET 1 & SHEET 2, the illustrated SUPERQUICK header card, ACCESSORIES CARD A, the long ACCESSORIES B sheet, an acrylic glazing sheet and this ASSEMBLY INSTRUCTIONS sheet.

Tools. A sharp modelling knife and a steel rule are essential. Bulldog clips, a few rubber bands and 'Sellotape' might be useful to secure parts of the kit while glue is drying.

Glues. Most liquid glues are suitable. PVA glue is recommended, it becomes matte and almost transparent when dry, although in cold conditions the glue tends to dry white. A solvent glue like 'Evostick' or 'UHU' is also recommended as it is quick to dry but can present problems when touching up model with water based paint. For gluing areas of paper, such as lining pieces, it is recommended that PVA be thinned or that a spray or a spreadable solvent glue is used.

Card-mounted components. Separate the parts only when called for by nicking with the knife at uncut points. Where the cutter lines are marked with red or blue arrows, they are scored only (i.e. only partly cut through). Here the component is intended only to be bent or folded. Sometimes additional scoring with the knife may be necessary, so that the board bends at the fold line without too much resistance. If the fold line is cut through, a repair can be made by gluing a thin paper strip to the back.

Waste. Waste card is indicated by the symbol (W)

Scoring. Red arrows signal a fold back. Blue arrows signal a fold forward

Windows. The Glazing Sheet has 19 window pieces divided by dotted lines. There are two methods of glazing, which can be combined for a really durable result:

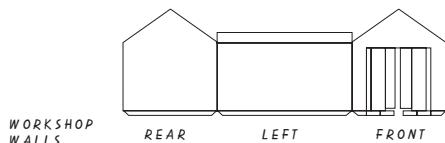
(1) Lay down the window piece face up. Apply glue to the back of the wall around the window aperture and the lower the wall onto the window piece. This method is easier for small windows and permits adjustment - correct the alignment before the glue sets and wipe excess glue from the window surface with a damp paintbrush or tissue.

(2) Apply narrow strips of 'Sellotape' along two sides of the unprinted back of the window piece. Lay the window piece down as before and lower the wall onto the partly exposed 'Sellotape'. When the window is attached to the wall, rub down the tape and apply further strips to the remaining two sides of the window piece.

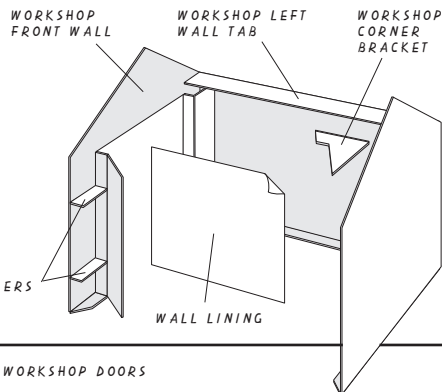
Finishing. The appearance of the completed model will be greatly improved if all exposed edges are touched up with paint. It is important that there is no glue on exposed edges.

Options. This kit, when completed, will provide you with a country fire station commonly found in rural towns. However the kit also includes additional components and signs to convert the Superquick Kit B34 "Bus Depot" into a large fire station such as are commonly found in large towns or cities. This kit can be converted to another use - there are additional signs for this purpose.

- 1 Divide the two SHEET halves. From SHEET 1 take the WORKSHOP WALLS, complete with front, left and rear walls, the WORKSHOP LEFT WALL TAB & four bottom TABS. Note the red arrows signalling fold lines. Remove from the FRONT WALL the two HOARDINGS and the waste piece. Detach the four FILLER pieces and fold the entrance wall pieces round them as illustrated.



Fold the FRONT WALL back, fold WORKSHOP LEFT WALL TAB over and glue edges of TAB and inner wall piece to inside walls to secure the corner. From ACCESSORIES CARD A take one piece of the WORKSHOP INNER WALLS LINING and glue it to the inside wall up against the front entrance column piece. Take the WORKSHOP CORNER BRACKET from SHEET 1 and glue it into position in the top corner of the left and rear walls. Fold in the bottom TABS.

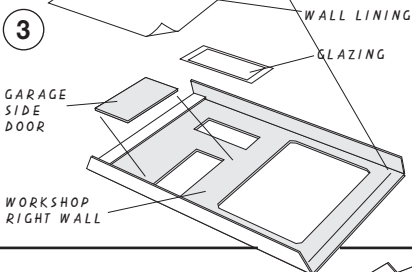


- 2 From SHEET 1 take the LEFT SIDE PAVING and glue into the groove made by the bottom TABS along the left wall and around the front wall pillar. From SHEET 2 take the WORKSHOP DOORS and from the glazing sheet take the four window pieces and glaze the doors. Glue the doors squarely into position as illustrated.

LEFT SIDE PAVING

Note;

On ACCESSORIES CARD A there is a WORKSHOP FLOOR included in the kit in case the workshop is to be modelled with the doors open. The doors can be divided or folded into single door sections and glued open to the entrance walls.

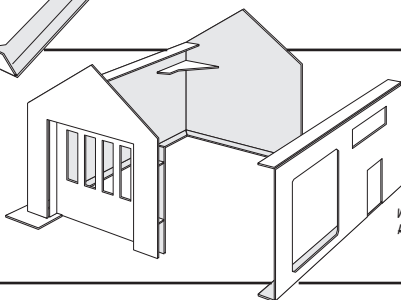


From SHEET 2 take WORKSHOP RIGHT WALL complete with top, bottom and side TABS. Remove window and door waste pieces and TOWER PAVING. From the glazing sheet take the appropriate window piece and glaze window aperture. Fold back the side TABS and glue them flat. Fold back the top and bottom TABS.

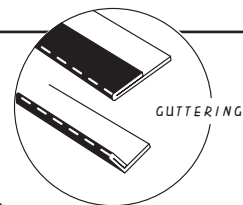
From SHEET 2 take the GARAGE SIDE DOOR and mount it behind the doorway. From ACCESSORIES CARD A take the remaining piece of WORKSHOP INNER WALLS LINING and glue it inside the workshop a couple of millimetres from the right edge.

- 4 Glue the right wall assembly to the inside edges of the front and rear walls. Make sure that the bottom edge is level with the other walls.

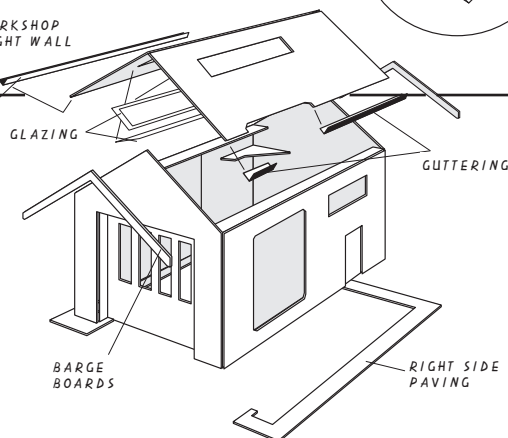
GLAZING PIECES NOT ILLUSTRATED



- 5 From ACCESSORIES sheet B take the GUTTERING pieces, score in line with the red arrows using the edge of a ruler, fold and glue as illustrated.



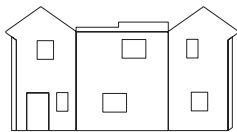
WORKSHOP RIGHT WALL



- 6 With the walls of the workshop established, this assembly has to be completed before the office can be positioned correctly. From SHEET 2 take the two piece roof component and remove the two hoardings including the waste surrounds. From the glazing sheet take the two appropriate window pieces and glaze the window apertures. Take the appropriate GUTTERING lengths to line the three side edges of the roof and glue into position.

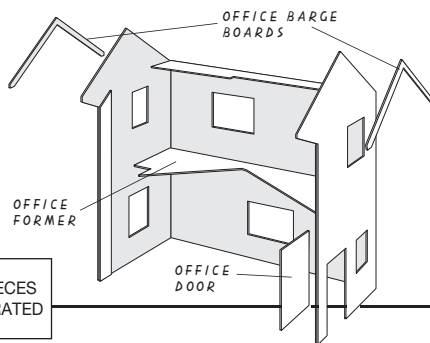
From SHEET 1 take the two pieces of WORKSHOP BARGE BOARDS and glue them level with the top edges of the front and rear walls. Glue the roof assembly squarely into position upon the walls. From SHEET 1 take RIGHT & REAR PAVING and glue into the groove around the base of the front wall column, side walls and rear wall.

- 7** From SHEET 1 take the OFFICE WALLS piece, consisting of three walls and three TABS. Remove window and door waste pieces. From the glazing sheet take six appropriate window pieces and glaze window apertures. Fold the side TABS and glue them flat. Fold back the top TAB.



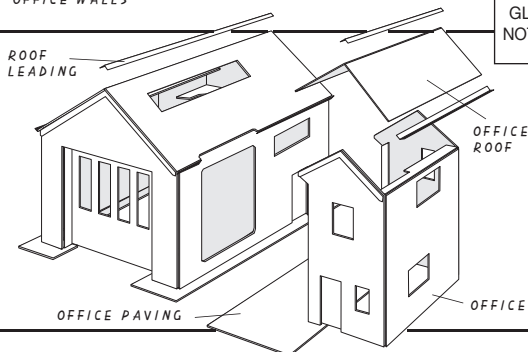
OFFICE WALLS

From SHEET 2 take the OFFICE DOOR and mount it in the doorway. From SHEET 1 take OFFICE FORMER and fold the walls around it as illustrated. From SHEET 1 take OFFICE BARGE BOARDS and glue them level with the top edges of the front and rear walls.



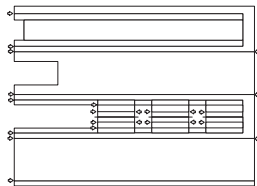
GLAZING PIECES NOT ILLUSTRATED

- 8** Glue the office assembly to the workshop side wall, positioning it within the notch in roof. From SHEET 1 take the OFFICE PAVING and glue it centrally, under the office assembly and against the edge of the right paving.



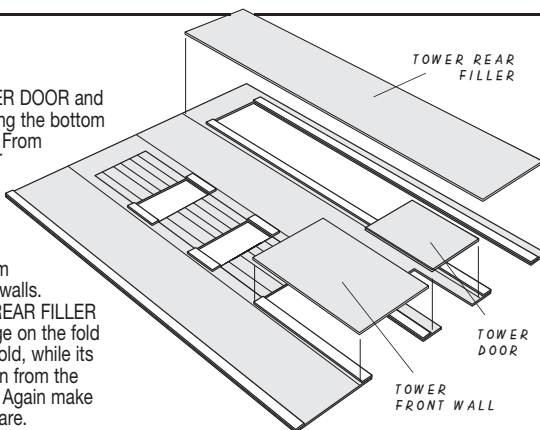
From SHEET 1 take the two piece OFFICE ROOF; from the ACCESSORIES sheet B take the appropriate guttering and prepare it as in instruction 5. Note that the office roof is asymmetric; fix the gutter to the edge of the larger roof panel. Glue this roof assembly squarely onto the office walls so the gutter is as far as possible from the workshop roof. From ACCESSORIES sheet B take ROOF LEADING pieces, fold along their middles and glue them along all of the roof ridges.

- 9** From SHEET 2 take TOWER WALLS component complete with TABS. Note the red arrows signalling the folds. Remove the HOARDING piece. Working face down, fold the TABS back carefully. It may be necessary to use a sharp edge of a ruler to fold along or to aid the fold by making addition scoring along the fold. Glue flat the FIVE longest-edged TABS (two pairs and an edge TAB).

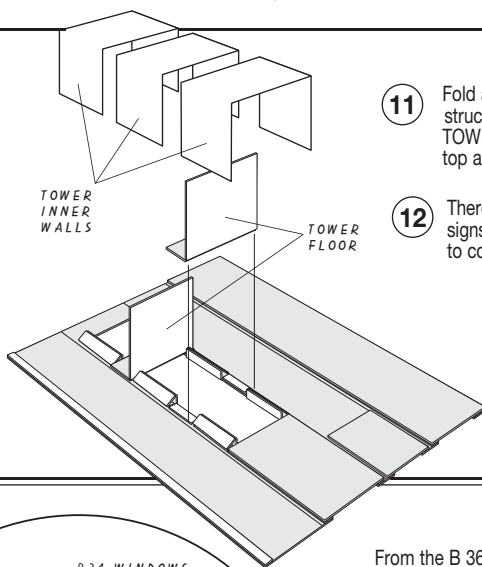


TOWER WALLS

From SHEET 2 take the TOWER DOOR and mount it in the doorway, making the bottom edge flush with the wall edge. From SHEET 2 take TOWER FRONT WALL and glue face down and centrally to the folded TABS. Make sure that the surrounding wall remains square and the bottom edges are flush with the main walls. From SHEET 2 take TOWER REAR FILLER and glue it face down - its edge on the fold side should be right over the fold, while its outer edge should be slightly in from the edge of the wall as illustrated. Again make sure that the wall remains square.



- 10** Above the newly fixed tower front wall are six inner wall sections, each of three pieces and mounted in pairs at each level. At each level carefully separate the TABS, by knife if necessary, and then fold each section back and glue its TAB to the rear of its brick frame as illustrated. Between these elements are two waste pieces, to be removed, and four very small TABS to be folded back and glued in place. From SHEET 2 take the two TOWER FLOOR pieces and fold the front brick element perpendicular to the floor element. Glue this brick face to one pair of the small TABS as illustrated. From ACCESSORIES sheet B take the three TOWER INNER WALLS LININGS. Fold as indicated and cut across the folds to make three equal pieces. Glue these pieces so the pattern shows from inside each aperture.



- 11** Fold and glue the tower wall sections to close the structure. From SHEET 2 take TOWER ROOF and TOWER PAVING and position them squarely at the top and bottom respectively.

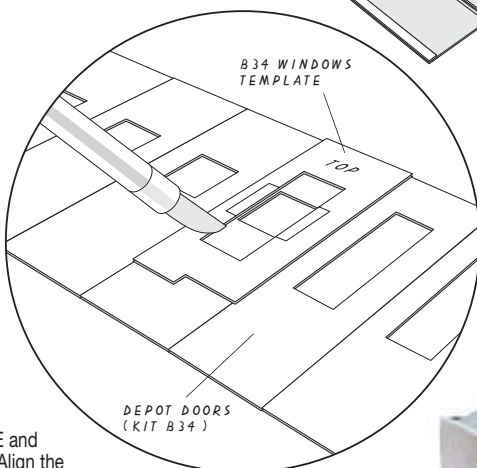
- 12** There are two "County Fire Station" signs and a couple of STATION BADGES to complete the kit.



13 MODIFYING KIT B 34.

The sister SUPERQUICK kit B 34 "Bus Depot" can be converted into a large Fire Station building thanks to features in this kit. The training tower, built under instructions 9 to 11 above, can simply be located with the bigger building. Of course the two kits can be put together, the combination rather dwarfing either of the railway stations in the SUPERQUICK range! For this purpose the B 34 doors need to be changed.

From this kit B 36 SHEET 2 take B34 DOOR WINDOWS TEMPLATE and remove the centre window piece. Align the TEMPLATE with the 'box' markings over the existing window aperture on the depot doors. Mark and cut round the inside edges of the template with a sharp knife to enlarge the window apertures.



From the B 36 ACCESSORIES sheet B take the B34 DEPOT DOOR LININGS and apply them to the depot doors. From the B 36 glazing sheet take the appropriate window pieces and fix them to the rear of the depot doors as usual.

The two "County Fire Station" signs in this B 36 kit come in two sizes; the larger size is intended for the conversion of the B 34 Bus Depot.

In addition there are several signs provided to convert this model into a car hire depot, tyre shop or general engineering premises.

