

# PO259 OO Scale Crofter's Cottage

## INSTRUCTIONS GLUES

### UHU Solvent Free All Purpose Adhesive Glue

Works superbly well in our fine glue applicators. Dries quickly, but allows time for positioning of kit parts as described further on in the instructions.

Also Deluxe Materials 'SPEEDBOND'  
A fast drying PVA.  
see [www.deluxematerials.com](http://www.deluxematerials.com)

## GETTING STARTED

### 1 EXTRACTING COMPONENTS FROM THE BASE SHEETS.

To stop the components from falling off the sheets, they are held secure with score lines. These are cuts that only go about 75% of the way through the card.

To release them run the point of your knife along these score lines and they will come seamlessly away. These score lines are marked with blue arrows: WARNING, Cut with care using a knife that is not too sharp, this will reduce the risk of the blade running off the score and cutting the components.

### 2 MAKE YOUR 'BUILDERS YARD'.

As you extract the components from the base sheets they need to be kept away from your working area on a thick piece of card or a tray until needed. Keep the components organised to which building they belong to.

### CHECK LIST

This kit should contain the following:

- 2 x PRINTED SHEETS. Kit parts.
- 1 x GREY SHEET. Strengtheners parts
- 1 x GLAZING SHEET. Windows.
- 1 x INSTRUCTION BOOKLET.
- 1 x EXTRA BITS SHEET. Chimney pots, curtains.
- 1 x RIDGE TILES SHEET.

### READ THROUGH ALL THE INSTRUCTIONS BEFORE YOU START.

This is a complex kit that requires particular attention to detail, so proceed with care!

To construct this kit you will need the following:

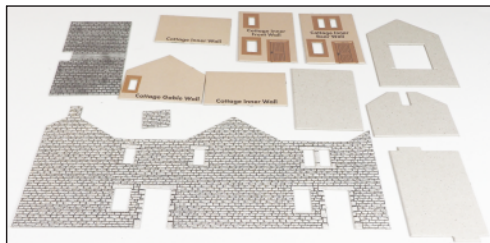
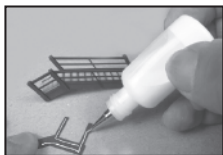
- 1. A modellers knife.
- 2. A pair of sharp scissors.
- 3. A steel ruler.
- 4. Glue - See glues.
- 5. Ultra Fine Tip Glue Applicator, see below.
- 6. A cutting surface - a sheet of card or cutting mat.
- 7. Fine point tweezers.
- 8. Water colour paints and a very fine brush for painting edges and corners.

### METCALFE Ultra Fine Glue Tip Applicators.

These bottles are essential for gluing the smaller components in this kit.



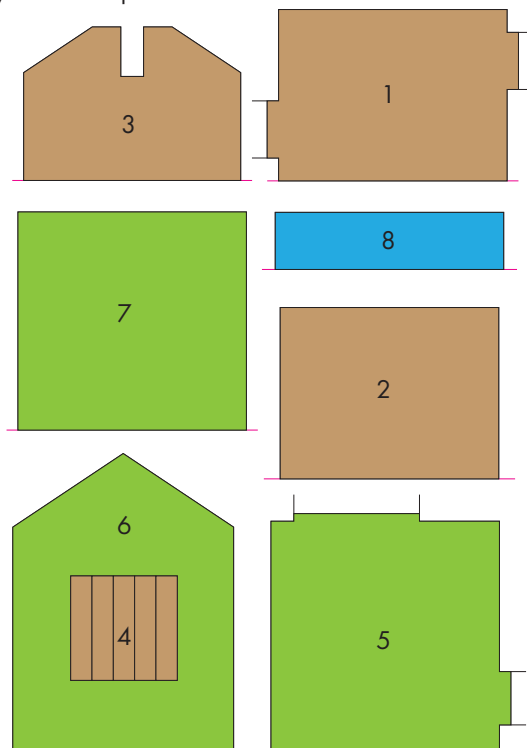
Tiny strips and spots of glue can be accurately laid down with precision.



### 3 **STRENGTHENERS.**

To help identify the strengtheners, below is a key to the components.

- 1 - Cottage base
- 2 - Cottage inner floor
- 3 - Chimney wall
- 4 - Chimney supports (x5)
- 5 - Barn base
- 6 - Barn wall support
- 7 - Barn inner floor
- 8 - Lean-to base



### 4 **PAINTING THE EDGES**

The white card that shows on the corners and edges is best painted before you build the kit.

All you need is a simple set of water colour paints and a fine brush.

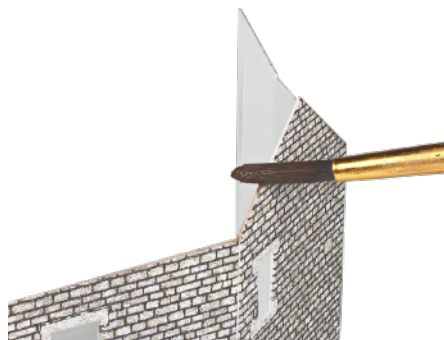
Something like this set of 'Reeves' watercolours or even simple child's watercolours.



Mix your colour with lots and lots of water, apx. 1 part paint to 5 parts water or more. **TEST ON WASTE CARD FIRST UNTIL YOU HAVE THE CORRECT SHADE & COLOUR.**

Fold the edges of the card back fully and gently run the point of your brush along the exposed white card. Only tiny amounts of paint on your brush. It's better to have to go over it a few times than to flood it with paint. Before the paint dries, run your finger along the edge to rub the colour into the absorbent white card. Then wipe away any paint that has run onto the printed surface before it dries.

Remember, you only need to just slightly tint the card with a little colour. **DON'T** paint a thick solid line down the edges, you will only make it look worse.



Paint all exposed edges, window frames, roof ridge as well as the wall edges..

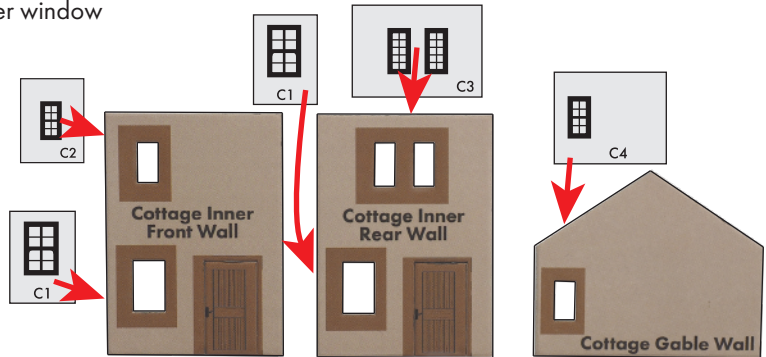
## LET'S START TO BUILD!

### Fig. 1. THE COTTAGE

1. Carefully cut out the glazing along the outer white lines. For the cottage you need the following windows:

- C1 - Front/Rear Inner wall lower window (x2)
- C2 - Front Inner wall upper window
- C3 - Rear Inner wall upper window
- C4 - Gable wall window

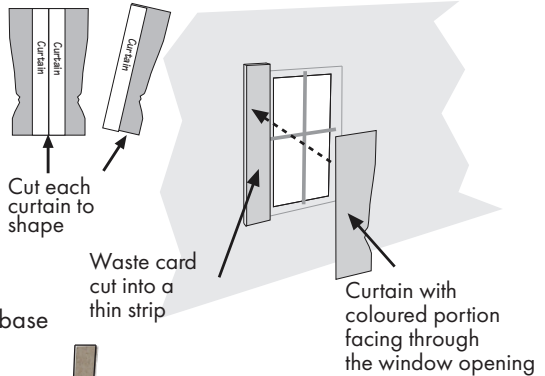
Fix each window to the openings with the matt printed side facing through the openings. Make sure the window is centred correctly within the frame.



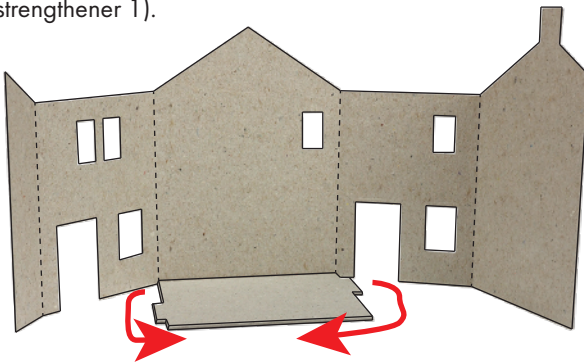
If you wish to add curtains, now is the time to do so.

To fit curtains fix a small strip of waste card to each side of the window, then glue the curtain to the waste card so that it shows through the window (the waste card will space the curtain back from the window a little giving a greater effect of depth).

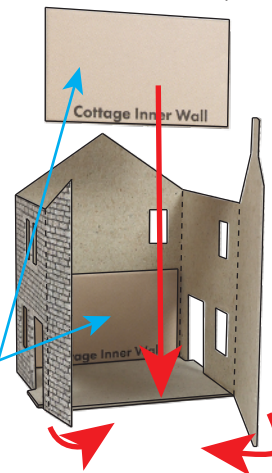
For extra curtains, visit this product on our website [www.metcalfe-models.com](http://www.metcalfe-models.com)

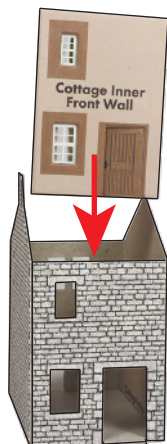


2. Wrap the cottage walls around the cottage base (strengthen 1).

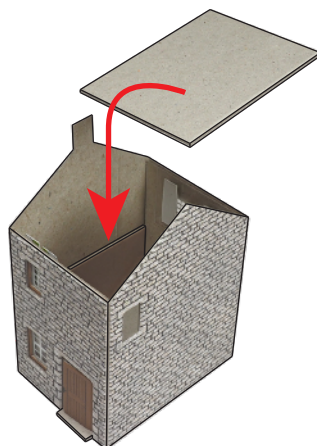
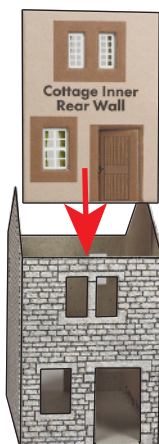


Now glue the two cottage inner walls flush to the base and centred on the two gable walls, one joining the folded round walls.



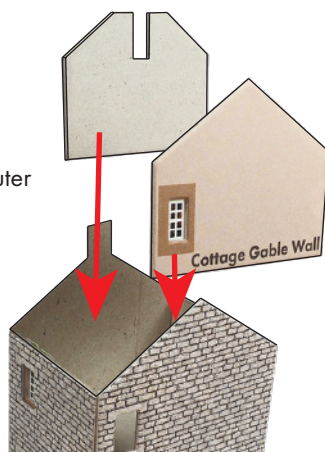


**3.** Now add the front and rear inner walls, carefully align the windows to the openings on the main walls.



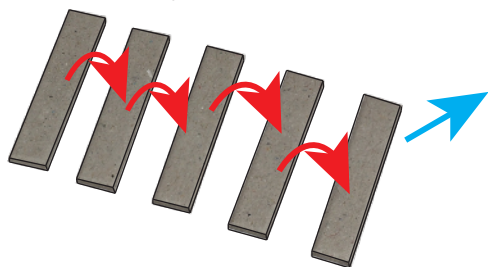
Now add the inner floor (strengthener 2) this fits flush to the top of the two inner walls

**4.** Glue the chimney wall (strengthener 3) to the chimney side, keeping the apex edges flush to the outer walls.

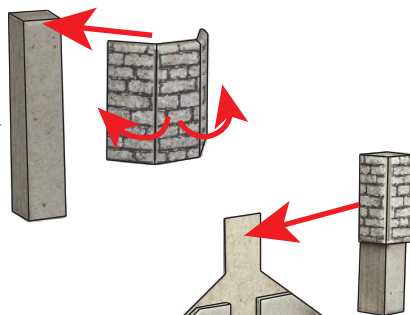


Then add the gable wall aligning to the window opening and keeping the edges flush along the top apex.

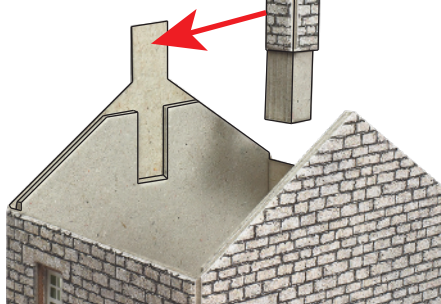
**5.** Combine the five chimney supports (strengtheners 4) to a solid block with all edges flush.



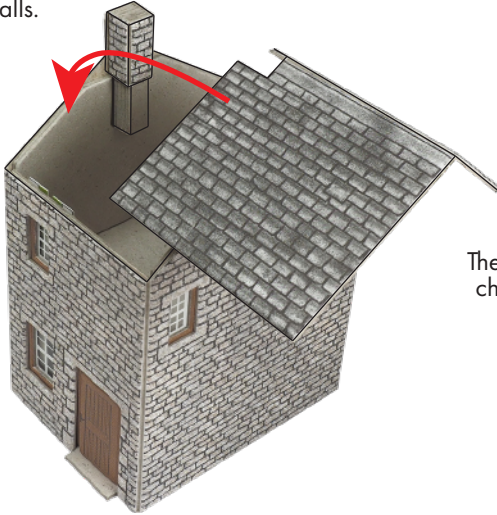
Wrap the chimney stack wall around the block keeping the edges flush at the top.



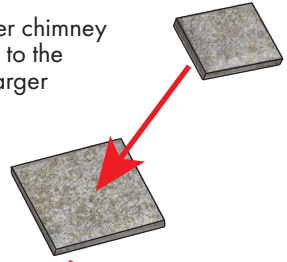
Fix the chimney stack into the slot on the chimney wall strengthener keeping the top edges flush with the main wall



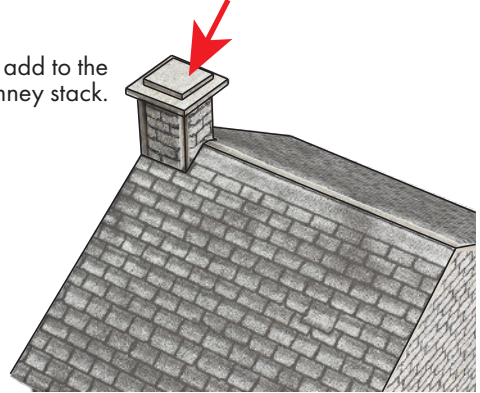
6. Add the cottage roof, keeping the gable ends of the roof flush to edges of the gable walls.



Add the smaller chimney capping stone to the centre of the larger capping stone



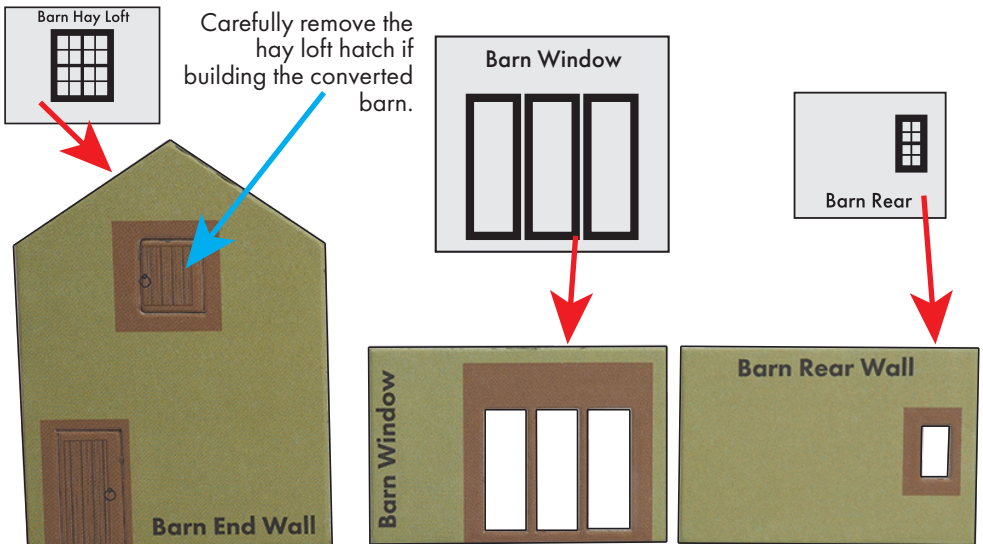
Then add to the chimney stack.



**Fig. 2. THE BARN**

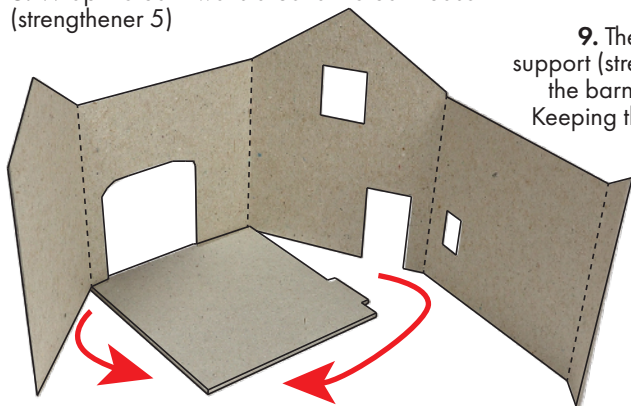
7. Now onto the Barn. This can be made in two ways, either as a working barn or a conversion, they are built the same way, but with the barn window taking the place of the barn door. If building the working barn then only the rear window is required.

First add the windows to the openings with the matt printed side facing through the openings. Make sure the window is centred correctly within the frame, then add any curtains (if conversion).

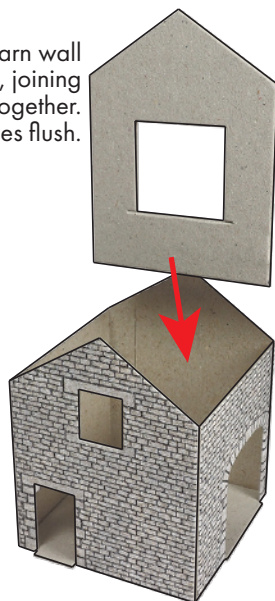




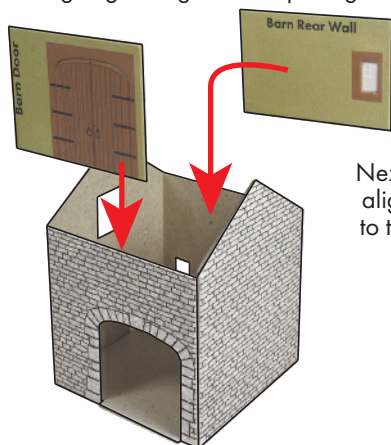
**8.** Wrap the barn walls around the barn base (strengtheners 5)



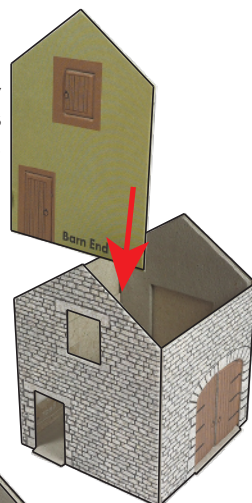
**9.** Then add the barn wall support (strengtheners 6), joining the barn walls flush together. Keeping the apex edges flush.



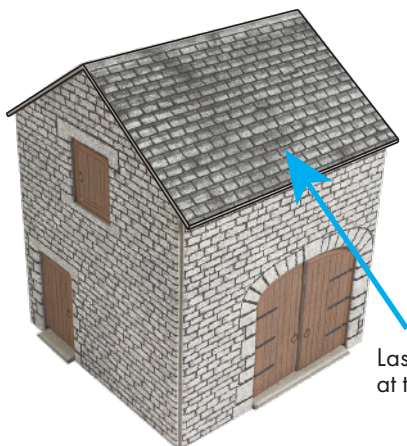
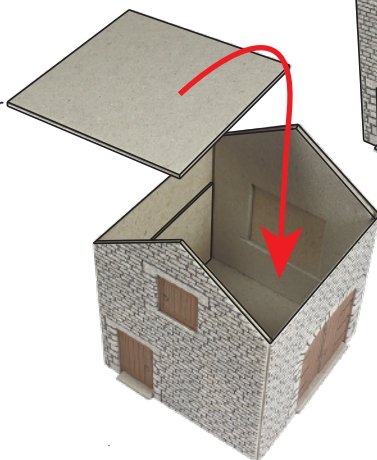
Add the rear wall and the barn door/window, carefully aligning through to the openings on the main outer walls.



Next, the end wall, again carefully aligning the window/door frames to the openings on the outer walls.



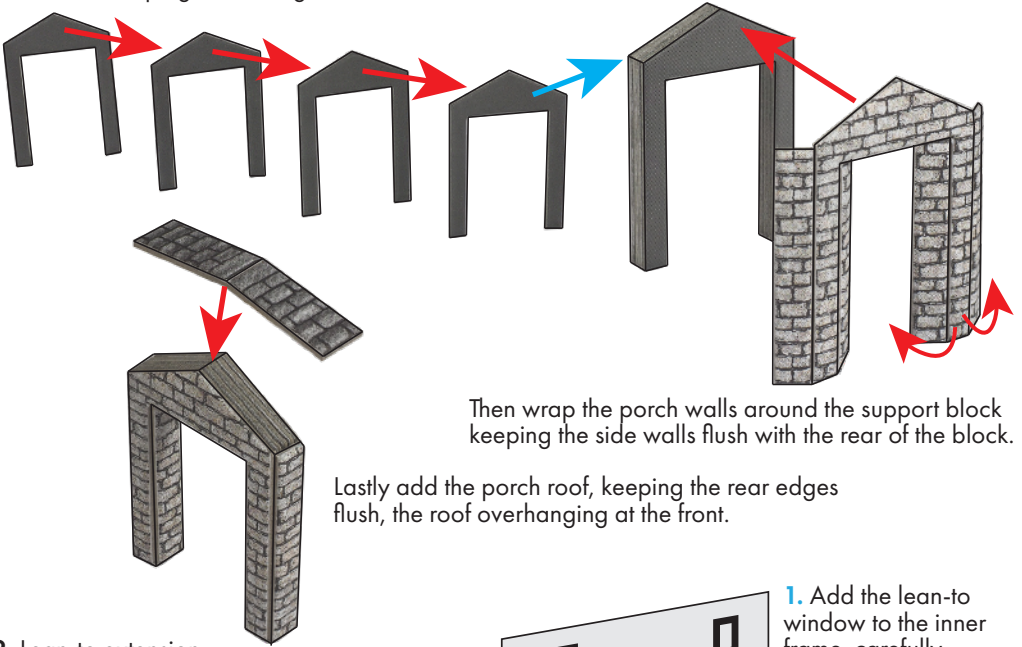
**10.** Now drop in the barn inner floor (strengtheners 7) which rests atop the rear wall and barn door/window



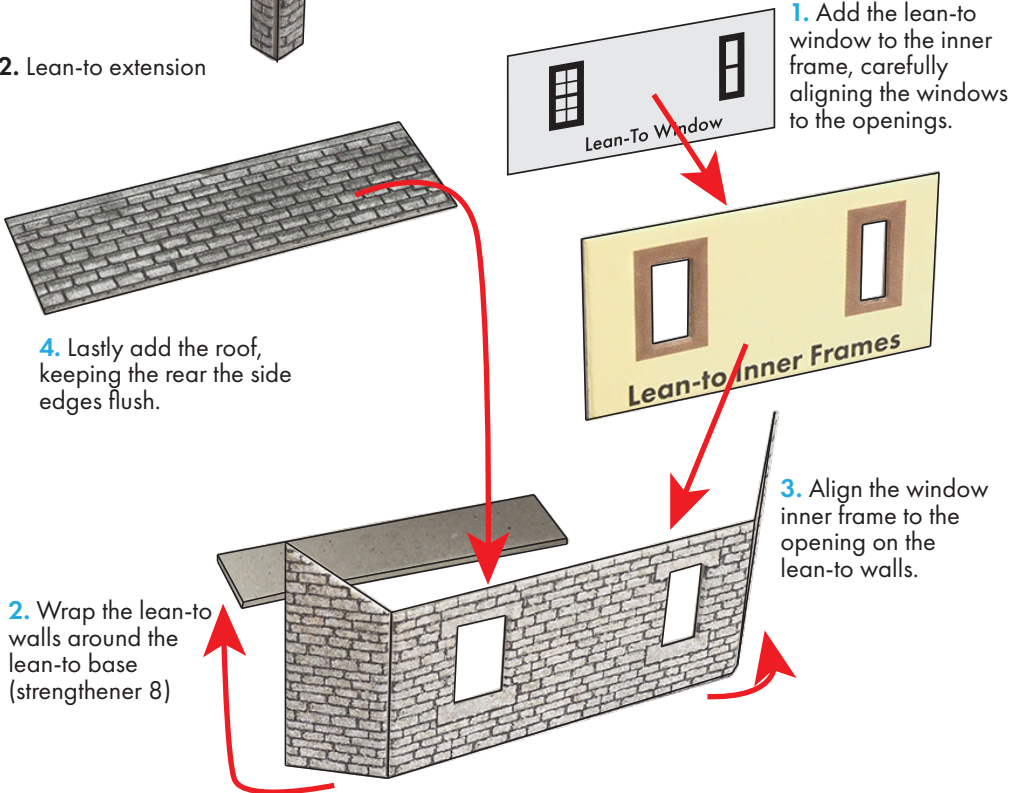
Lastly add the barn roof, keeping the edges flush at the gable ends.

### Fig. 3. OPTIONAL ADD-ONS

11. Porch Combine the four porch supports into a single block keeping all the edges flush.

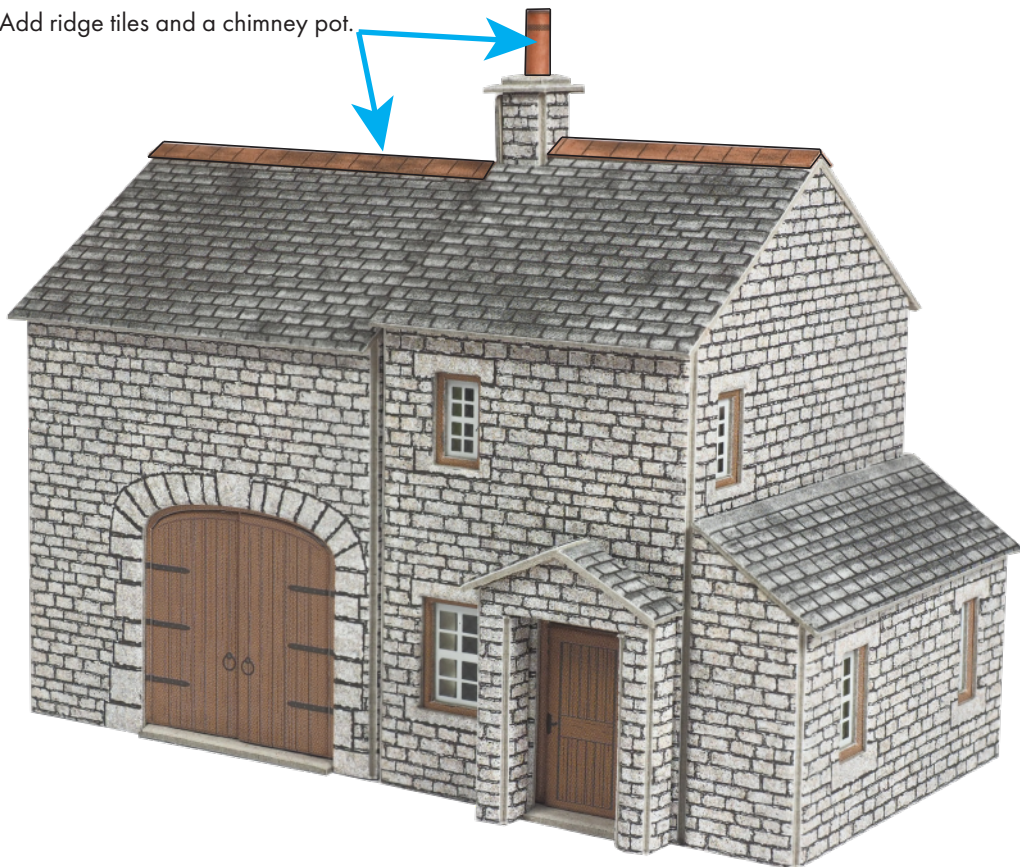


12. Lean-to extension



## Fig. 4. FINISHING TOUCHES

Add ridge tiles and a chimney pot.



The barn and cottage can be stand alone or combined. The optional add-ons can be placed in multiple locations around the buildings. They also can be interchanged with the add-ons from PO258 Gardener's cottage for more customisation.



Combine multiple kits to create a village street scene.