

# PO285 00/HO Scale Industrial Unit

## CHECK LIST

This kit should contain the following:

- 1 x SHEET A. Printed kit parts.
- 1 x SHEET B. Printed kit parts.
- 1 x GREY CARD. Inner Supports.
- 1 x GLAZING sheet.
- 1 x INSTRUCTION BOOKLET.

## READ THROUGH ALL THE INSTRUCTIONS BEFORE YOU START.

This is a complex kit that requires particular attention to detail, so proceed with care!

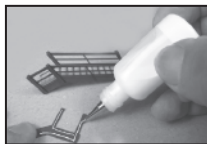
To construct this kit you will need the following:

1. A modellers knife.
2. A pair of sharp scissors.
3. A steel ruler.
4. Glue - See glues.
5. Ultra Fine Tip Glue Applicator, see below.
6. A cutting surface -  
a sheet of card or cutting mat.
7. Fine point tweezers.

## METCALFE

### Ultra Fine Glue Tip Bottles.

These bottles are essential for gluing the smaller components in this kit.



Tiny strips and spots of glue can be accurately laid down with precision.



## GLUES

### UHU Solvent Free All Purpose Adhesive Glue

Works superbly well in our fine glue applicators. Dries quickly, but allows time for positioning of kit parts as described further on in the instructions.

Also **Deluxe Materials 'SPEEDBOND'**

A fast drying PVA.

see: [www.deluxematerials.com](http://www.deluxematerials.com)

## INSTRUCTIONS

## GETTING STARTED

### 1 EXTRACTING COMPONENTS FROM THE BASE SHEETS.

To stop the components from falling off the sheets, they are held secure with score lines. These are cuts that only go about 75% of the way through the card.

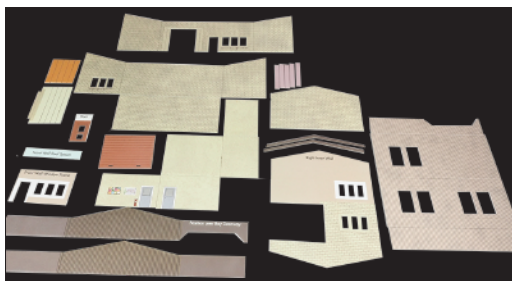
To release them run the point of your knife along these score lines and they will come seamlessly away.

These score lines are marked with blue arrows: **WARNING**, Cut with care using a knife that is not too sharp, this will reduce the risk of the blade running off the score and cutting the components.

### 2 MAKE YOUR 'BUILDERS YARD'.

As you extract the components from the base sheets they need to be kept away from your working area on a thick piece of card or a tray until needed.

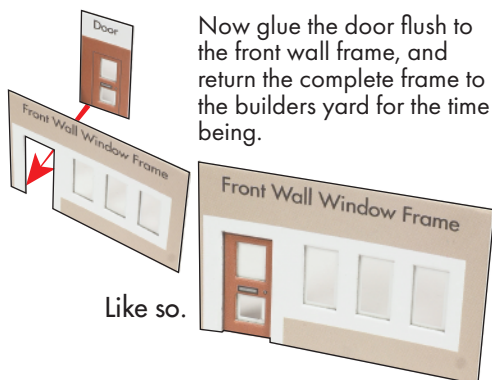
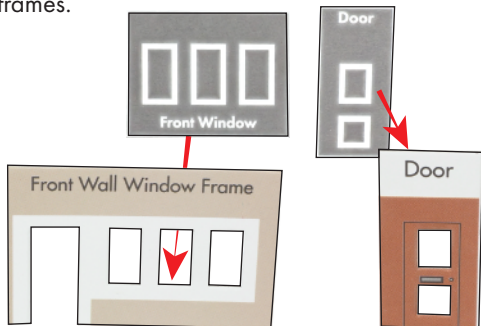
Cut out all the clear glazing components and place on a separate sheet of dark card so they don't get lost.



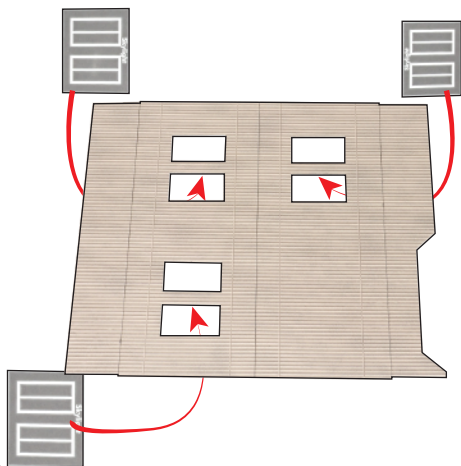
## LETS START TO BUILD!

### 3 WINDOWS

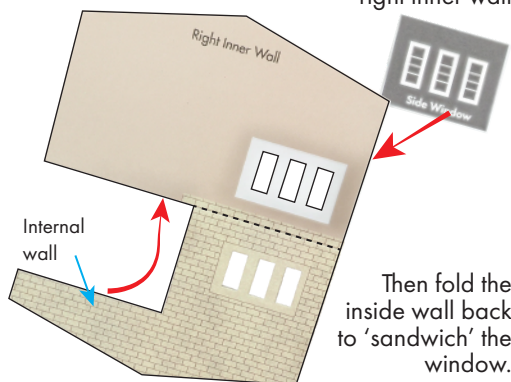
Start by matching the front window and door glazing to the front window and door frame. (the windows are shown with a black background below for illustrative purpose)  
Carefully centre the windows to the back of the frames.



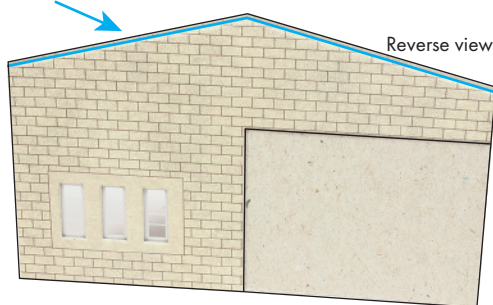
Next carefully align and glue into place the three skylight windows to the underside of the roof. Then put to one side in the builders yard.



Finally add the side window to the back of the right inner wall

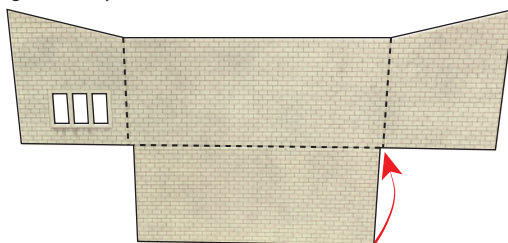


Keep the side edges flush and note the 1 mm approx. ridge along the top where the internal wall is below the outer wall. (highlighted here in blue) This is for the roof former to sit into later.

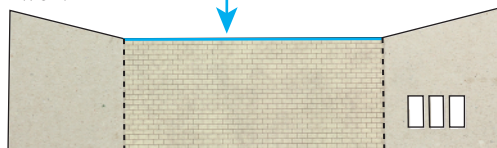


### 4 WALLS

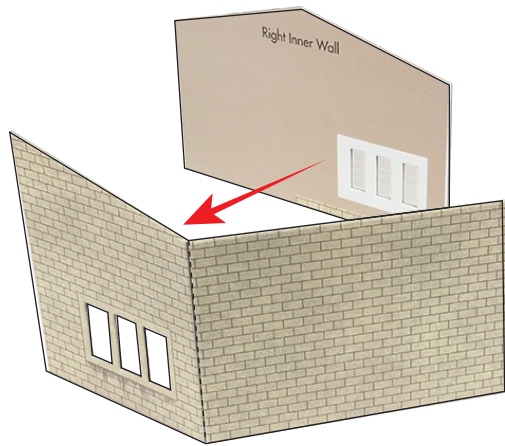
Take the rear wall section and fold back and glue into place the internal wall.



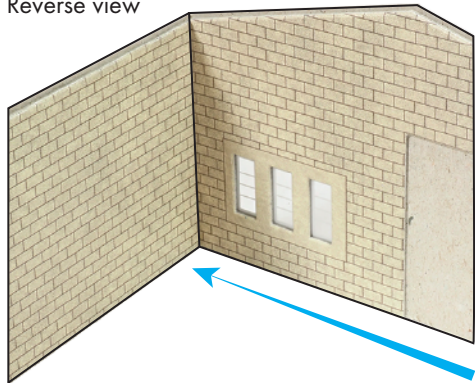
Once again note the 1 mm ridge along the top edge where the internal wall is shy of the rear wall.



Add the right inner wall flush to the 'windowed' side wall of the rear wall section.

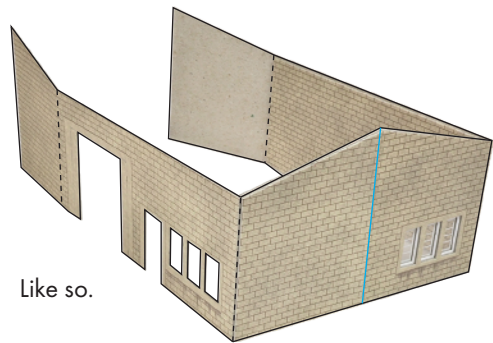
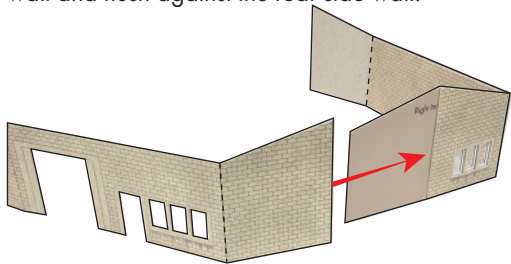


Reverse view



Make sure the windows align, the edges are flush and the wall fits tight into the corner.

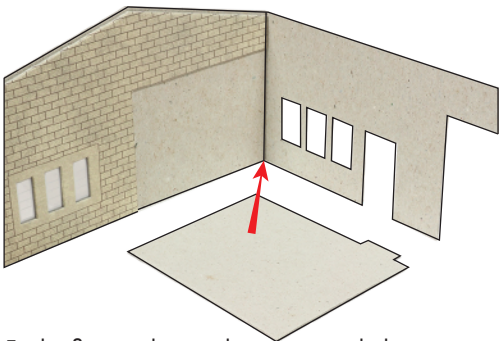
Now add the front wall, glue to the right inner wall and flush against the rear side wall.



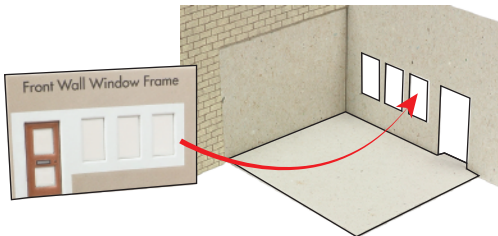
Like so.

## 5 OFFICE RECEPTION

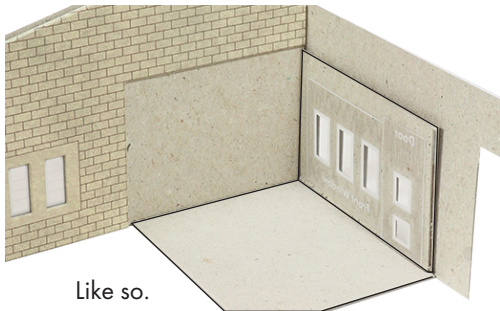
First add the floor section, this is located on the grey strengthener sheet.



Fit the floor tight into the corner with the doorstep fitting through the open doorway.



Now add the front wall window frame, carefully align the windows and door in position.

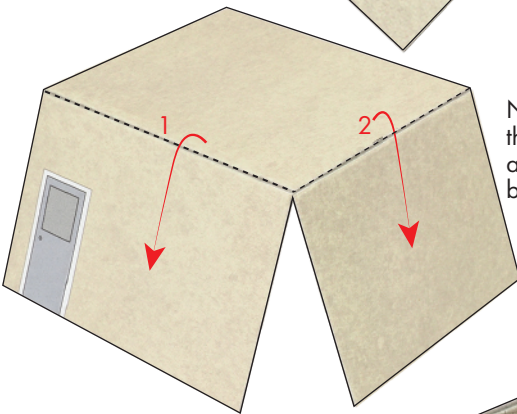
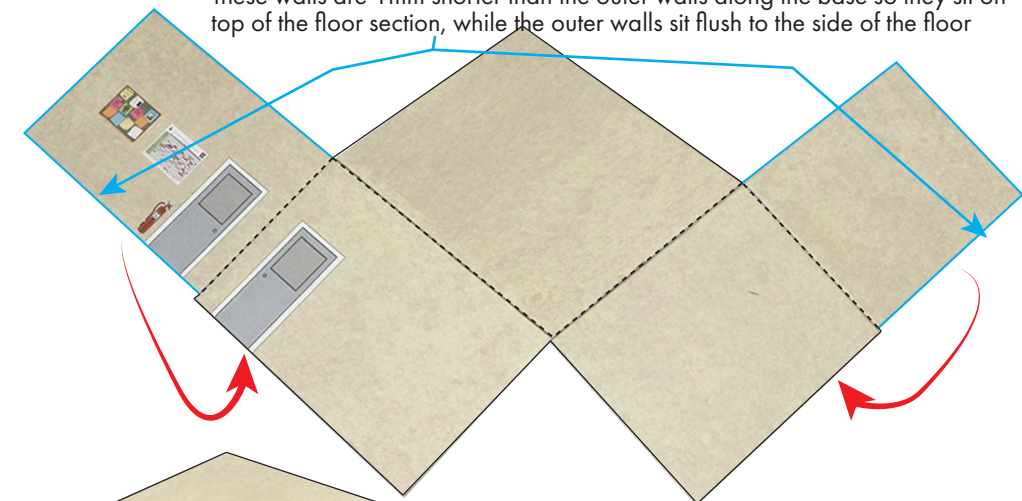


Like so.



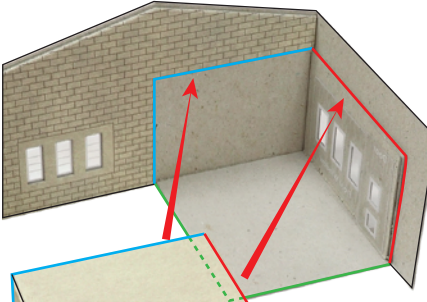
Now assemble the reception inner walls. First fold back and glue the internal walls (marked below with a blue outline)

These walls are 1 mm shorter than the outer walls along the base so they sit on top of the floor section, while the outer walls sit flush to the side of the floor



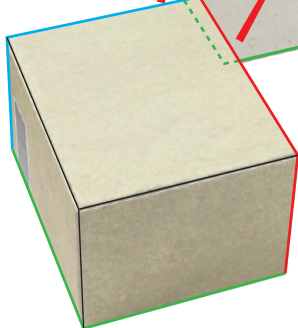
Now fold down the sides to create an three sided cube. Fold the door side first as the other side fits flush to it. Test the fit before applying glue.

Once the walls have set, test the fit before adding into place. Below the edges that are coloured the same marks the fit.

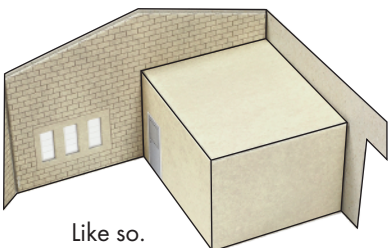


The **blue** edge fits flush under the stonework and flush against the grey card.

The **red** edge fits flush over the front wall window/door frame



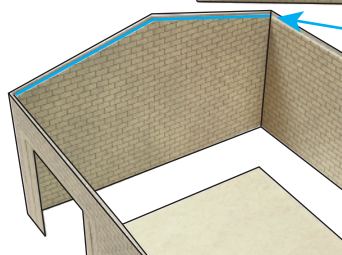
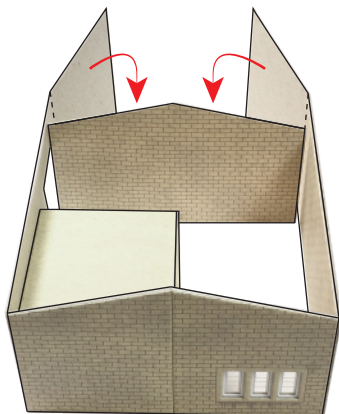
The **green** edge fits flush to the floor base with the internal wall sitting atop the floor.



Like so.

## 6 BAY INNER WALL

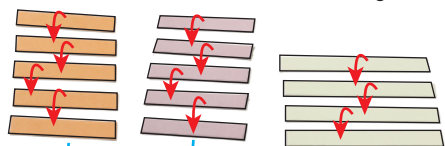
Glue into place the bay inner wall, as with the right inner wall this fits flush against the two remaining 'wings' of the front and rear wall sections.



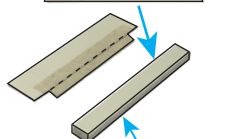
Once again note the 1mm ridge along the top edge where the bay inner wall is shy of the external walls.

## 7 BAY DOOR

Start by combining the bay door spacers. A (orange x 5) B (purple x 5) and beam spacers (cream x 4) into solid blocks with all edges flush.

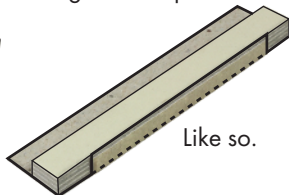
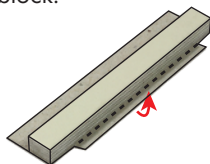


These two blocks 5 layers thick



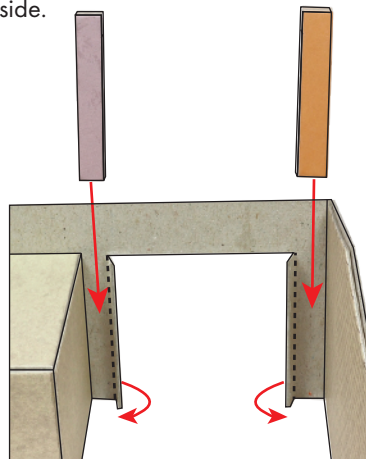
4 layers thick

The block of four beam spacers then fit to the underside (non printed side) of the larger spacer. Fit flush to the fold line, then fold the stone coloured tab around the edge of the spacer block.

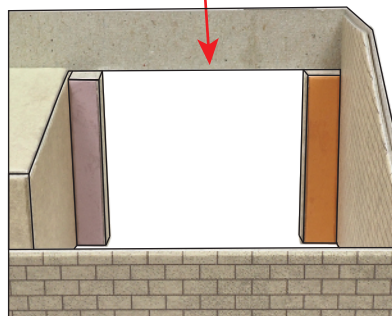


Like so.

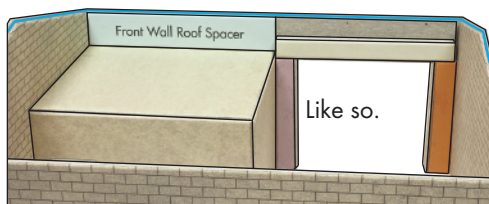
Slot the purple block to the left of the bay doorway flush to the office reception wall and fold the doorway inner wall flush to the block. Repeat with the orange block to the opposite right hand side.



The beam spacer block then sits atop the doorway, the stone tab fits flush in between the two upright spacer blocks. Again there will be a 1mm gap between the top of the spacer and the top of the wall.



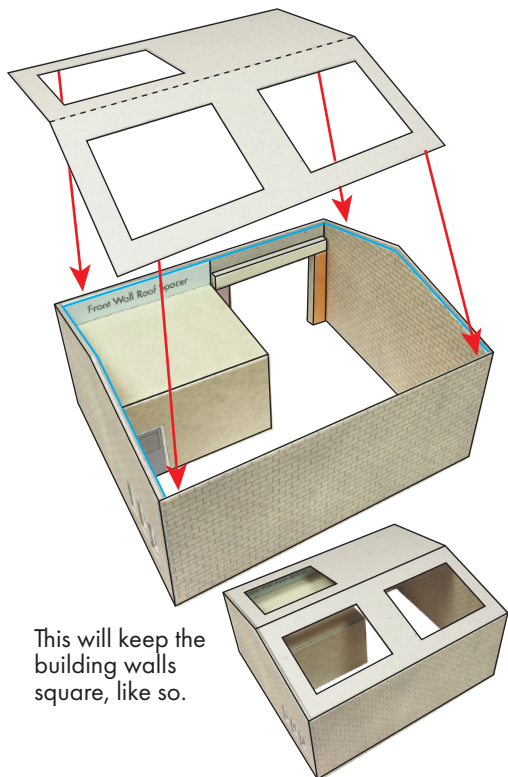
Then add the front wall roof spacer alongside the beam spacer and flush to the top of the office reception ceiling, again leaving a 1mm ridge below the outer wall (highlighted below in blue)



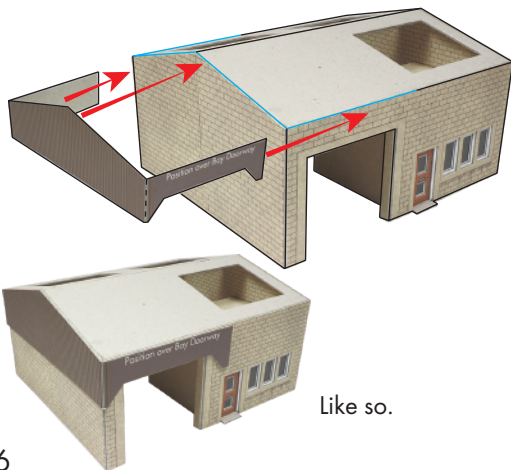
Like so.

## 8 ROOF

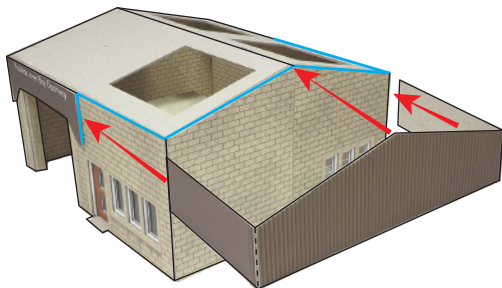
Fit the inner roof former from the strengthener card. This sits on the 1 mm ridge formed by the inner walls and sits flush with the level of the outer walls. Test the fit before applying glue.



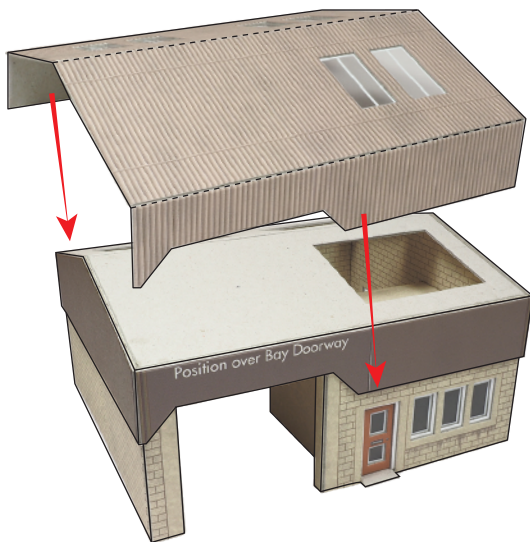
Now fit the gable end trim. Start with the left hand side (the one which positions over the bay doorway) Fix flush to the top of the walls.



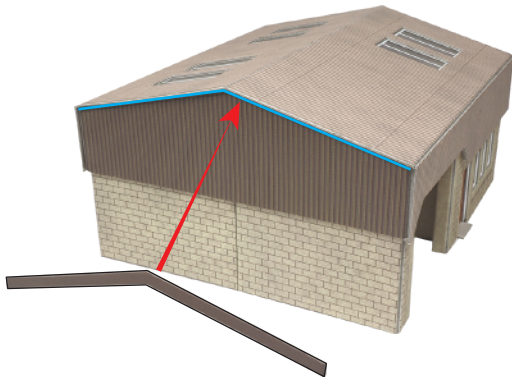
Repeat with the right hand side gable trim, test the fit first and trim if required to get a flush fit against the left hand gable trim.



Now add the roof. Centre lengthways and fold the front and back sections over the brown trim.



Lastly add the two barge boards flush to the roof edge at each gable end.





## 9 FINISHING TOUCHES

Finally add the bay door and your choice of signs.



