

PO284 Boilerhouse & Factory Entrance

SHEET 1

READ THROUGH ALL THE INSTRUCTIONS BEFORE YOU START.

To construct this kit you will need the following:

1. A Modellers knife.
2. A pair of sharp pointed scissors.
3. A steel ruler.
4. Glue - UHU Clear Adhesive or Bostik Clear Adhesives are best.
Plastic Glue for the steps.
Make sure you get the tubes with the narrow nozzle for easy application.
5. A cutting surface - a sheet of card or a cutting mat.
6. Tweezers to hold the smaller components.

PLEASE NOTE

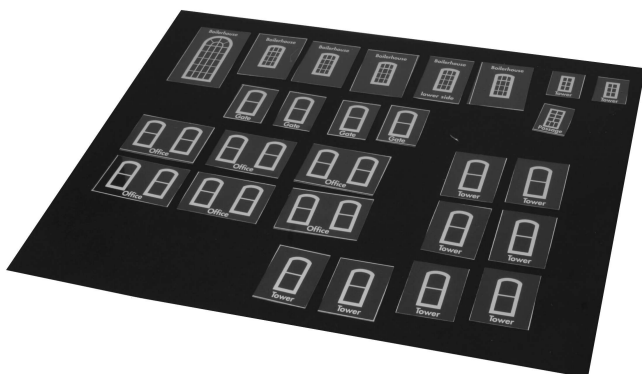
Each component is fastened to the sheet by means of a score line.
These are cut lines that have only gone about three quarters of the way through the card.

To detach each component from the sheet, locate the score line (usually indicated with blue arrows) and run the point of a knife carefully along the scoreline until the part is free from the backing sheet.

CAUTION - be very careful when running the point of your knife along these score lines, it is easy to run out of the groove and cut something you shouldn't.

Fig. 1. START WITH THE WINDOWS.

This is the fiddly bit!
Start by cutting out all the clear plastic window sections. Cut along the thin white lines that mark them out.



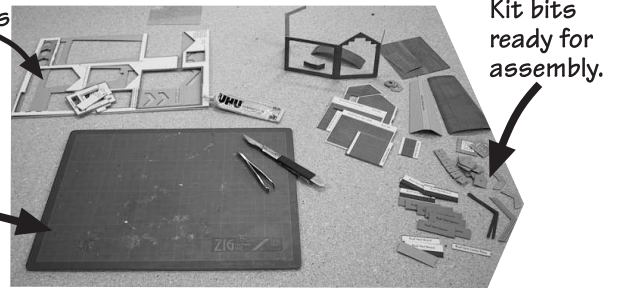
Lay them all out on a piece of dark card, so that you can see them all. There should be:

- 1 x Large boilerhouse.
- 5 x Small boilerhouse (only 4 needed in the kit).
- 4 x Gate.
- 8 x Tower (only 7 needed for tower, extra one is for interconnecting building).
- 6 x Office double windows.
- 1 x Passage
- 2 x Tower small windows (these fit directly to wall).

Your Work Surface

Keep offcuts to one side.

A clean flat working area



Keep it tidy. When you have extracted all the components from the sheet, place them in neat piles, FACE UP on sheets of thick card, so you can move them around as needed. TAKE CARE WITH SMALL COMPONENTS PLACE MULTIPLES IN PILES TOGETHER. DON'T THROW ANYTHING OUT. Offcuts can come in handy for bracing etc. and it also reduces the risk of accidentally throwing anything away.

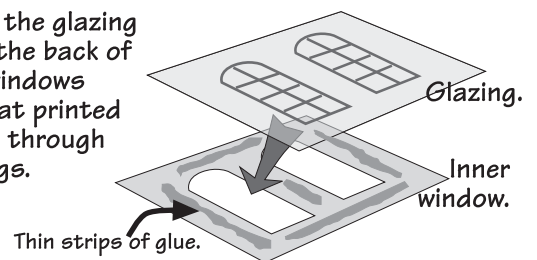
CHECK LIST

This kit pack should contain the following:

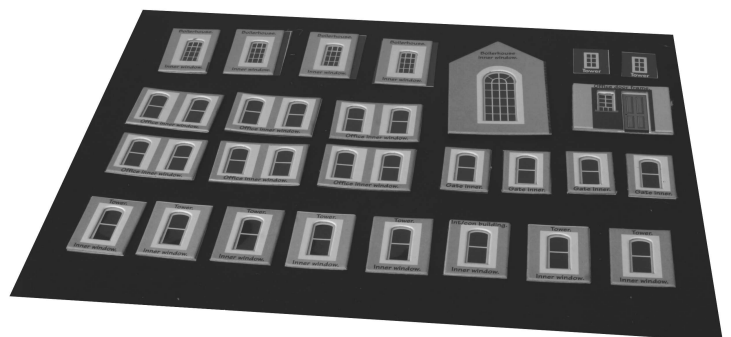
- 1 x SHEET A - Chimney and office walls.
- 1 x SHEET B - Boilerhouse and water tower.
- 1 x SHEET C - Gate and tower main components.
- 1 x SHEET D - Windows, roofs and inner floors.
- 1 x GREY SHEET - Inner strengthening components.
- 1 x GLAZING SHEET.
- 1 x INSTRUCTION SHEET 1.
- 1 x INSTRUCTION SHEET 2. With plastic square attached.
- 1 x Ridge Tile Sheet.

Fig. 2. FIT GLAZING TO INNER WINDOWS.

Fix each of the glazing sheets to the back of the inner windows with the mat printed side facing through the openings.



Lay out all the window units on a sheet of card so that you don't lose them.
Place to one side until needed.



NOTE: the small window above the interconnecting building door doesn't have a printed glazing sheet. Just fix a piece of plain plastic over the opening.

PLAIN GREY CARD.

The components on the plain grey card are used within the buildings to strengthen the kit.

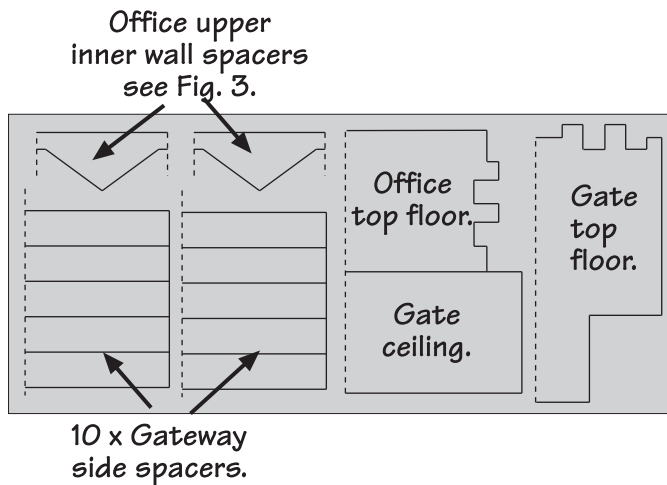


Fig. 3. ENTRANCE BUILDING.

This is made up of two separate buildings, the tower and the office. The gate section fits in between them.

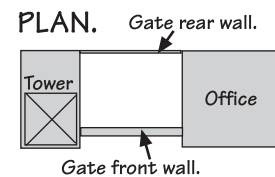
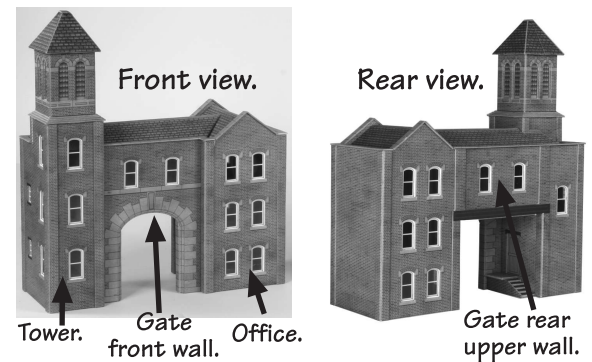


Fig. 4. OFFICE BUILDING WALLS.

There are a number of items to fix to the back of the walls before going any further.

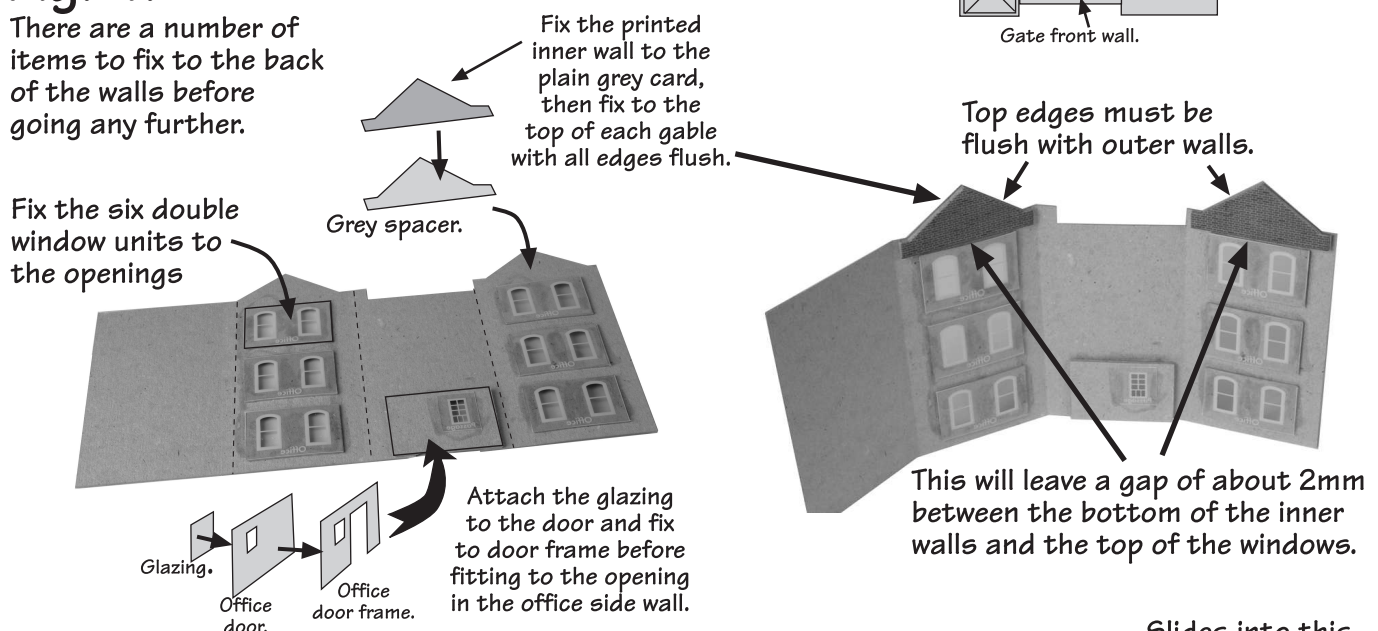


Fig. 5. INSERTING THE INNER FLOORS.

Fold the two inner floors in half and glue together to make double thickness. Fold three walls around.

WARNING It is important that you fit the top floor the correct way around. LOOK CAREFULLY.

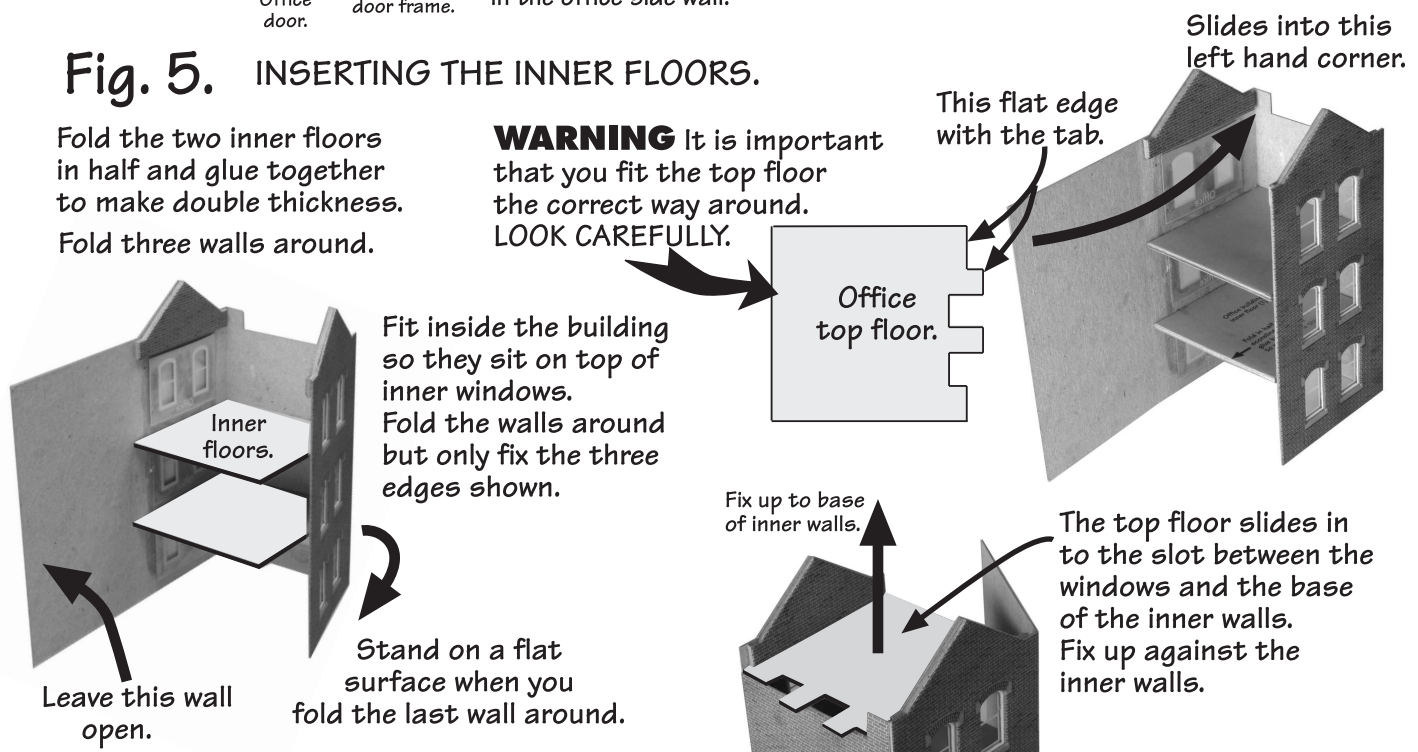


Fig. 6. CORNER BRICKWORK.

There are three corner strips for this building. If you look at the building as shown below with door wall showing, the 3 corners strips fit to corners 1, 2 & 3.

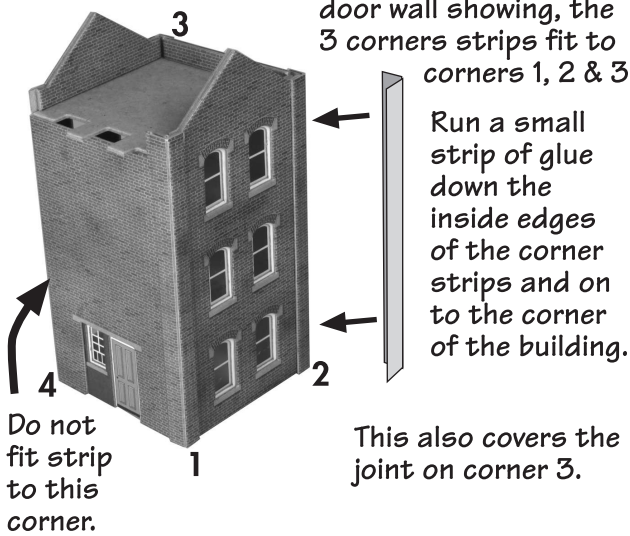
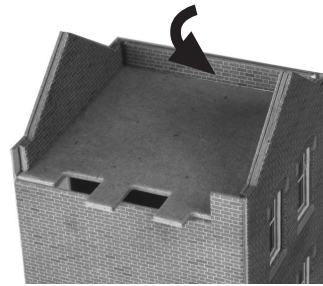


Fig. 7. OFFICE ROOF.

When the side wall has been fixed, there is a small brick inner side wall that fits here.



When the braces are fast, fit the roof on to the grey flat card. Push against the side wall.



Next, fix the two blue roof braces to the underside of the roof slates.

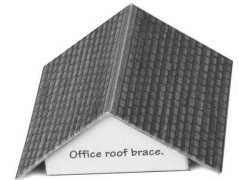
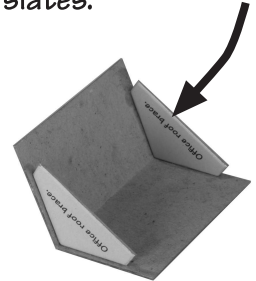


Fig. 8. TOWER BUILDING.

Fix the windows so that the frames are centred in the openings. The two small glazing pieces fit straight on to the outer wall.

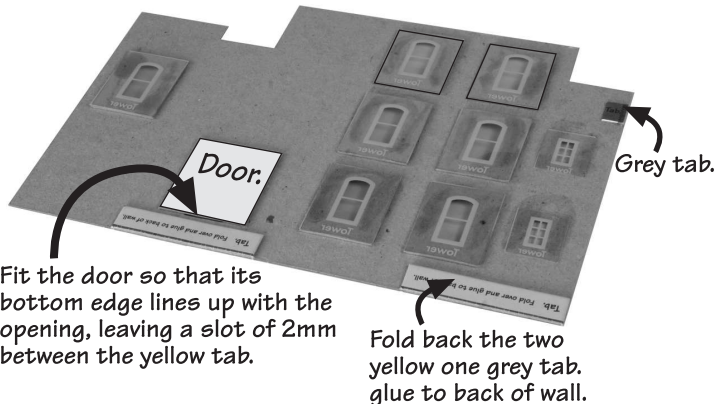


Fig. 9. INNER FLOORS.

The two small grey inner floors fit in the lower part of the building.

The bottom floor sits on top of the yellow tabs and the upper floor sits on top of the ground floor windows.

Stand on a flat surface when you fold the last wall around.

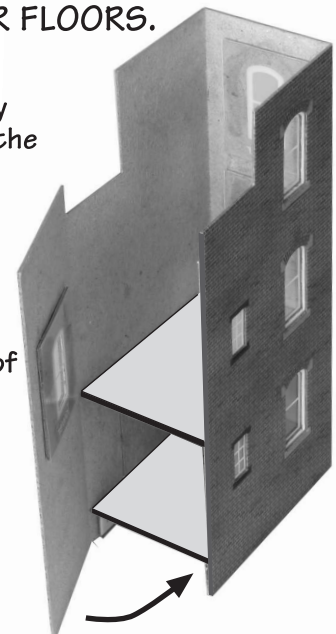
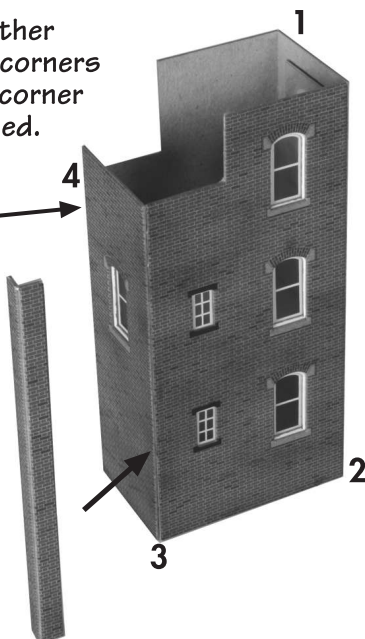


Fig. 10. CORNER BRICKWORK.

As with the other building, only corners 1, 2 & 3. have corner strips attached.

NOTHING on corner 4.

Note: Corner 3. is shorter than the other two front corners.

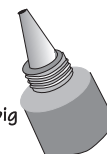


UHU GLUE TUBES

Although the 20ml. tubes of UHU have narrow nozzles, they are still a bit too big

Then with a pair of pliers nip one side of the nozzle tightly, so that it squeezes the soft metal around the pin.

Keep the pin in the nozzle when not in use to stop it from blocking up.



To make the nozzle smaller, put a piece of wire from a medium size paper clip or a large pin inside.

If using the glue frequently, it is not necessary to keep replacing the pin in the nozzle. To stop the glue running out, simply place the tube upright in an empty cup when not in use.

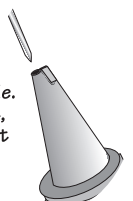
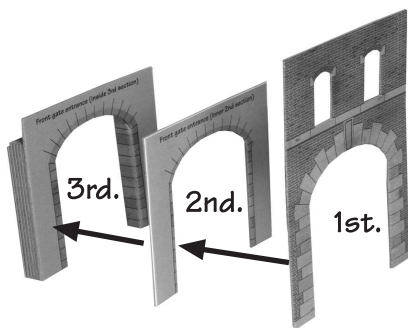


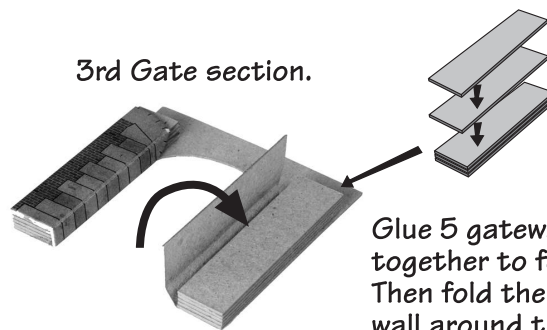
Fig. 11. FRONT GATE ENTRANCE.

The front gate is simply a wall section that fits between the office and the tower.



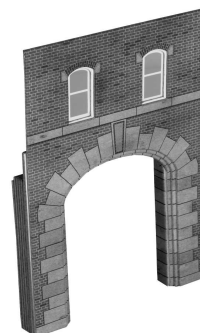
It is made up of three sections that fit one against the other. The openings in the 2nd. & 3rd. sections are progressively smaller, giving the stone arch a nice tapered effect. The 3rd. opening has fold around sides that give the effect of depth the wall.

3rd Gate section.



The 10 grey spacers are located on the plain card sheet (5 for each side).

Glue 5 gateway spacers together to form a block. Then fold the gate side wall around the block squared up and flush, to form a solid wall.

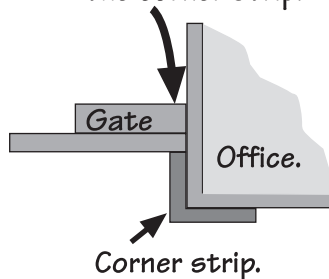


Glue all three sections together making sure that the outer sides are all flush.

Finally, attach the windows.

Fig. 12. FIX FRONT GATE TO BUILDINGS.

The gate wall is fixed to the side of the office pushed up against the corner strip.



Hold all the joints together until fast.

Fit the tower in the same way with the gate wall fixed up to the corner strip.

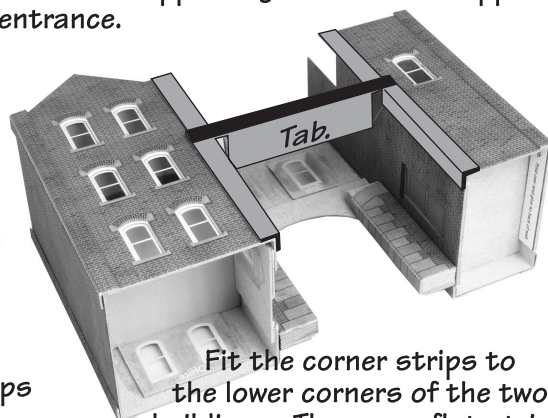


Fig. 13. FIX REAR GATE TO BUILDINGS.

This side is a little more delicate, so caution is needed. On sheet 'B' there is an 'H' shaped piece of card that contains corner brickwork and the supporting beam for the upper wall of the rear entrance.

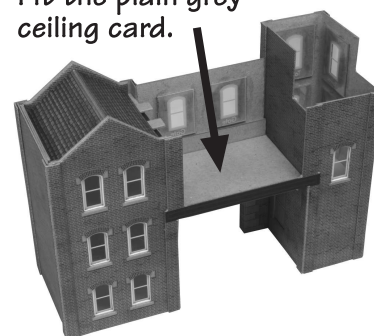


The two lower strips fold around to form corner strips

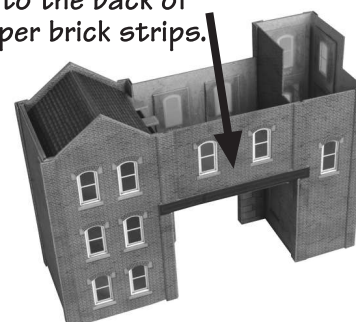


Fit the corner strips to the lower corners of the two buildings. The upper flat strips overhang the corners so that the upper rear gate wall can be fixed to them. The grey tab folds up and fixes to the gate ceiling.

Fit the plain grey ceiling card.



Fit the rear wall inside the building fixed to the back of the upper brick strips.

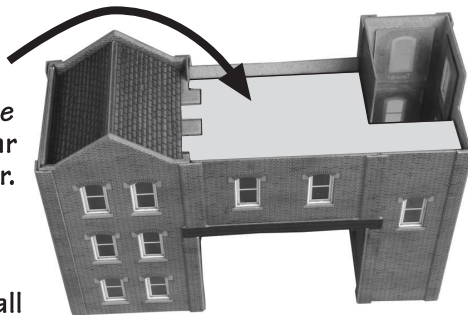


PO284 Boilerhouse & Factory Entrance

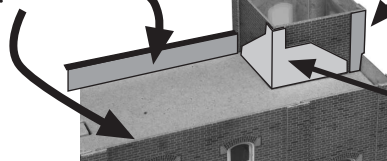
SHEET 2

Fig. 14. GATE ROOF.

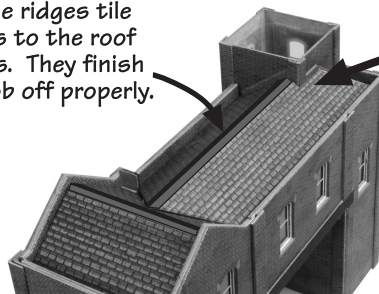
The grey top floor fits over the entrance and rear part of the tower. It sits on top of the tower and off ice walls. Next, fit the small upper brick wall (located on sheet 'C' next to the coping strips) to rear of tower.



Fit the inner rear roof walls to the backs of the upper walls

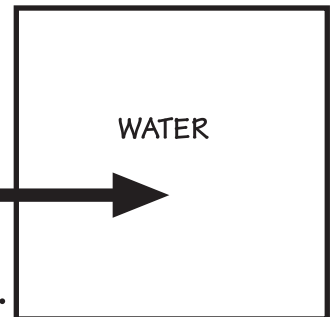


Fit the ridges tile strips to the roof ridges. They finish the job off properly.



This instruction sheet should have a piece of clear plastic attached here.

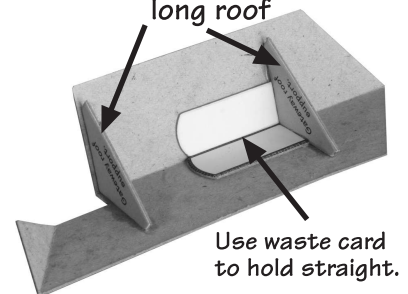
Use in the water tank as shown on the next page.



Small tower corner strip fits here.



Fix the two grey gateway roof supports to the underside of the long roof



Use waste card to hold straight.

Fit roof to building.

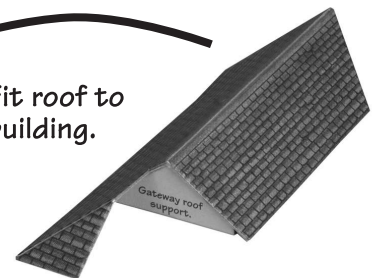
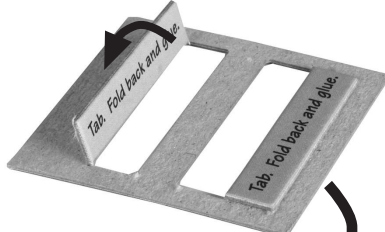


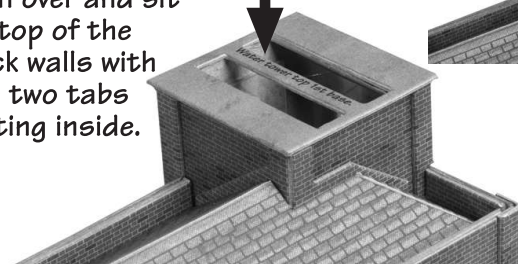
Fig. 15. TOWER TOP.

TOWER 1st. BASE.

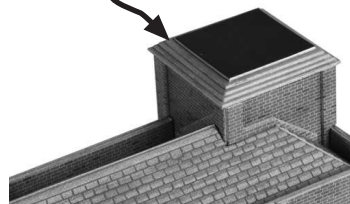
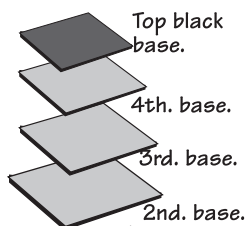
The top of the tower is topped off with a base section for the tower top to sit on. The 1st base sits on top of the brick walls. Start by folding over the two long pink tabs and gluing them back.



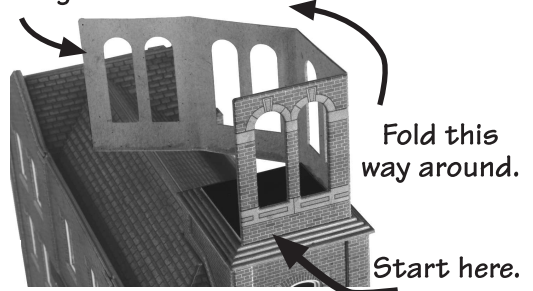
Turn over and sit on top of the brick walls with the two tabs sitting inside.



Fit the four base cards on top of each other centred on all edges.



Tower top outer walls fit around the black base card. Fold around as shown, the last side to fold in is slightly longer

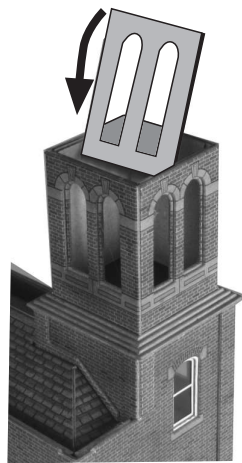


Like this

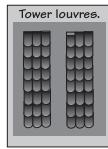
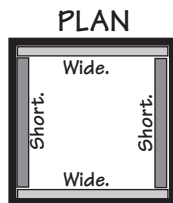


Fig. 16. TOWER TOP AND ROOF.

The four tower inner openings fit down inside the tower, these give the openings a greater depth.



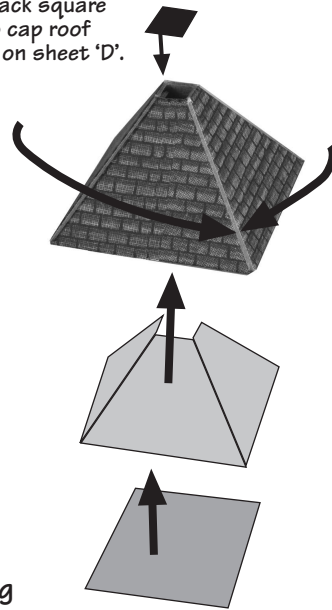
Fit the two that are slightly wider first. Fix them opposite each other. The two narrower openings will slide between them.



The four tower louvres cards fit behind the openings.

The openings can be left open if you wish, it looks quite good, but please note that there are no glazing sheets for these.

Black square to cap roof is on sheet 'D'.



The tower roof folds around so that the two roof sections meet butt ended together.

The grey inner support fits up inside to hold the joint rigid.

The roof base then sits up against the inner support, allowing bottom edges of the roof to hang over the edge when sat on top of the tower.

Fit the 5 coping stone strips to the wall tops. They are all cut to shape, ready to fit.

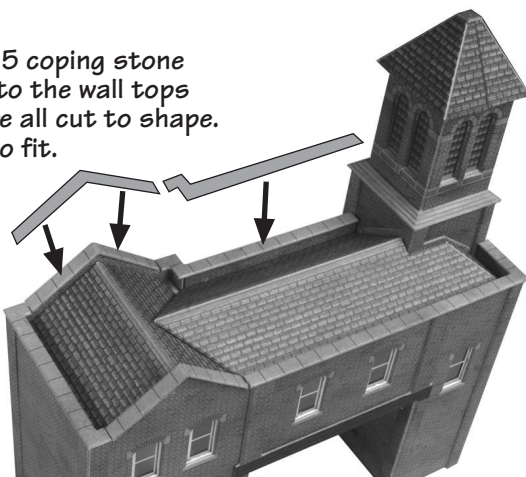


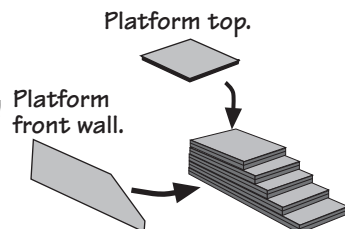
Fig. 17. STEPS.

There is a small flight of steps with small platform in the entrance leading to the tower door.

Glue the steps on top of each other, starting at the bottom with the longest step no. 1.

Fold each of the steps in half and glue to make double thickness.

Line all the steps up vertically on the back and side edges.



Fit into corner.

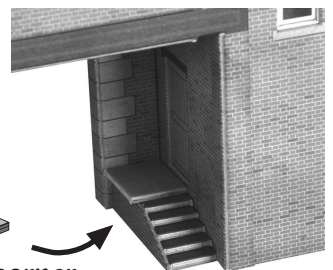


Fig. 18. BOILERHOUSE.

This is quite a complex building, there are two sections to the outer walls. Start with the front wall.



Fit the three windows, but NOT the door yet.

Fold over tab and fix.

Fold the walls around the base card with the door step sticking through the doorway.

When fast fit the door with its frame.

Door and frame.

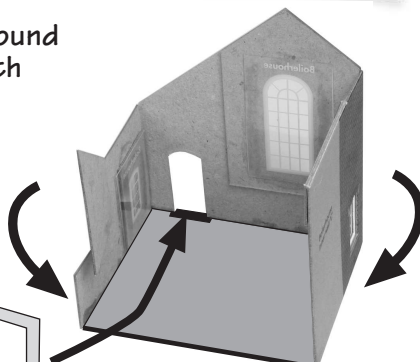


Fig. 19.

REAR WALL AND TOWER WALLS.

There are six sides to this wall, so take care. Start by fixing the two windows then the door with its frame.

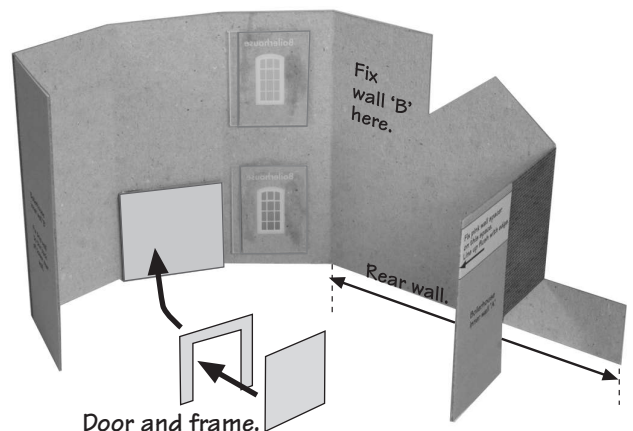


Fig. 20. FIT THE TWO SECTIONS TOGETHER.

This is where it get complicated. The front and back sections fit inside one another

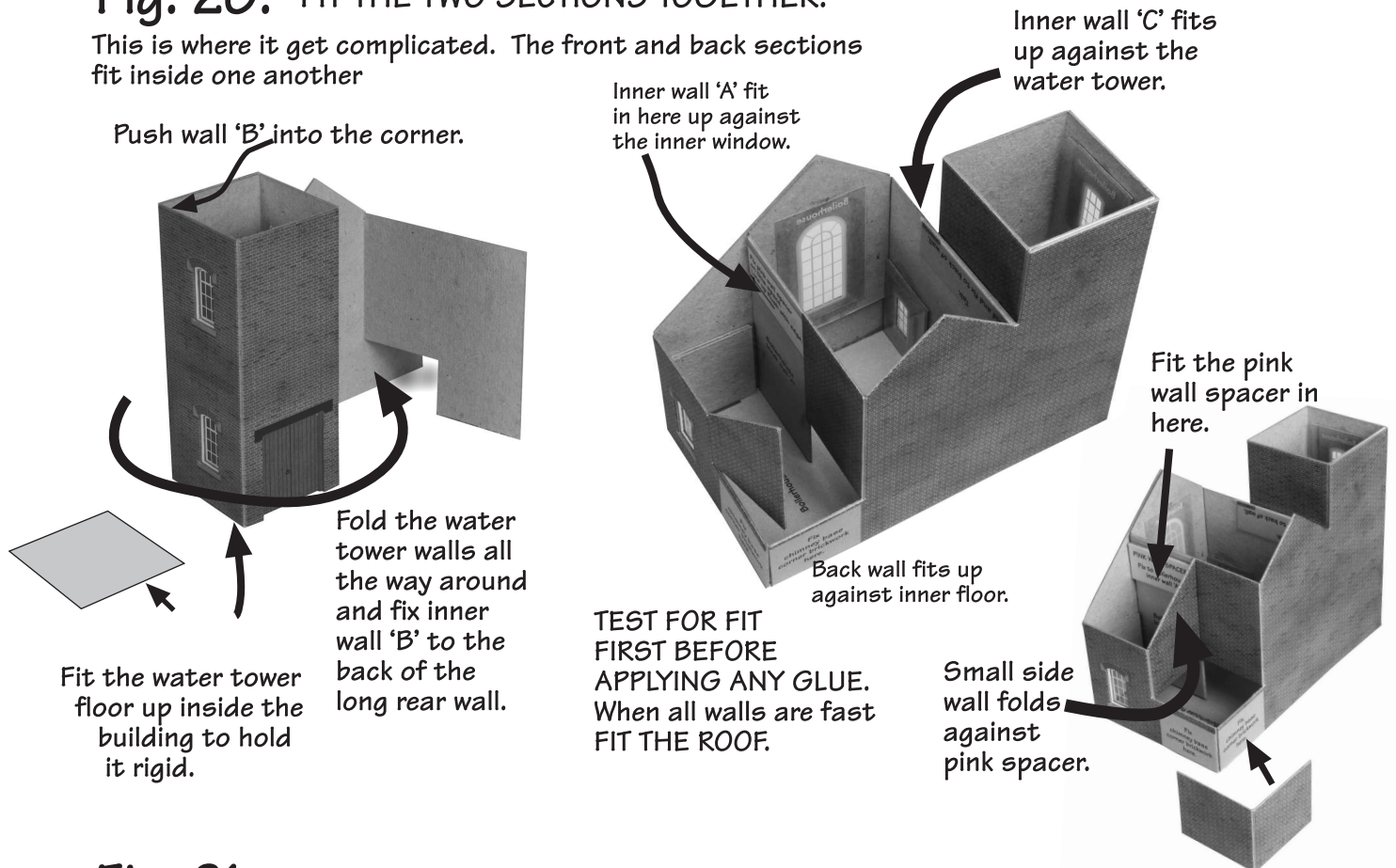
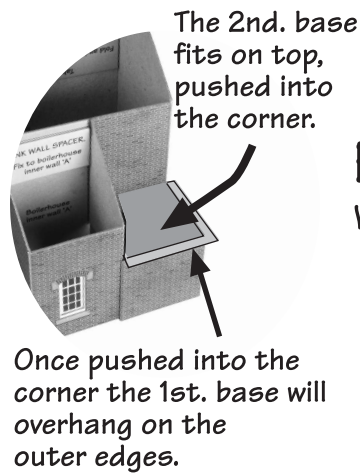
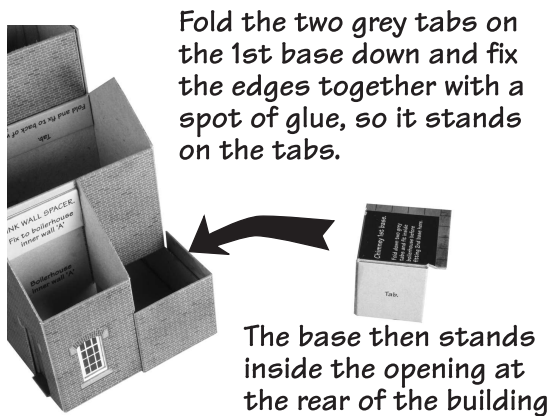


Fig. 21. CHIMNEY BASE.



Fix the chimney base corner brickwork onto the corner. This will hold the two ends together.

Fig. 22. WATER TOWER 1st. BASE.

The top of the water tower is topped off with a base section for the tank to sit on. The 1st base sits on top of the brick walls. Start by folding over the two grey tabs and gluing them back.

Fig. 23. WATER TOWER 2nd. BASE.

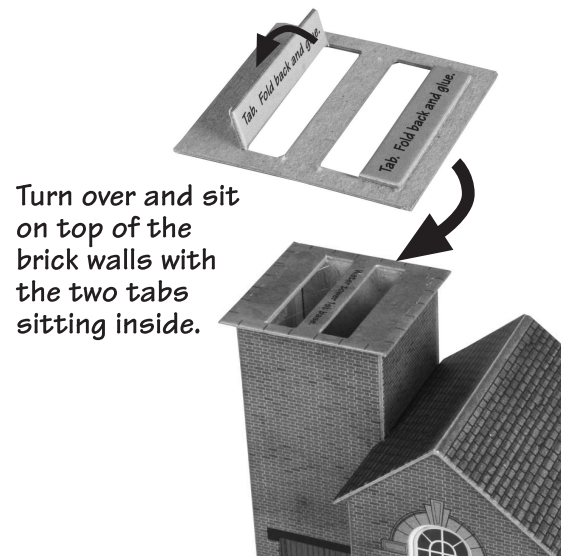
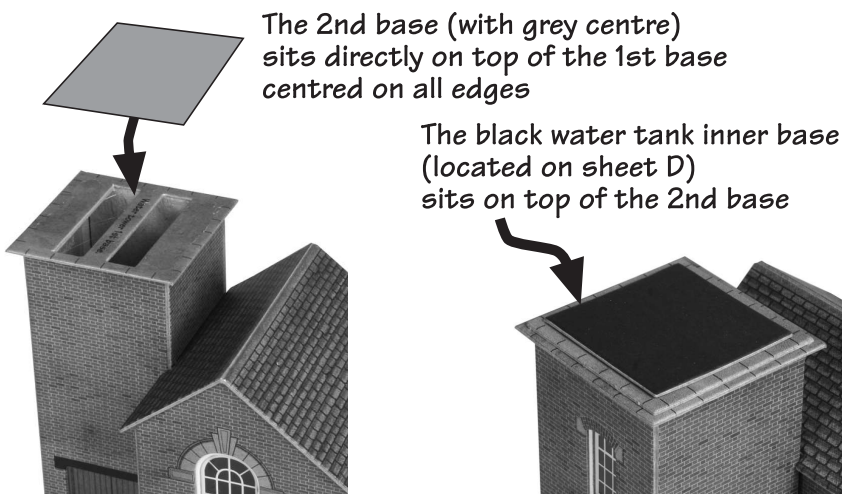
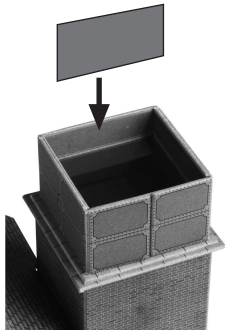


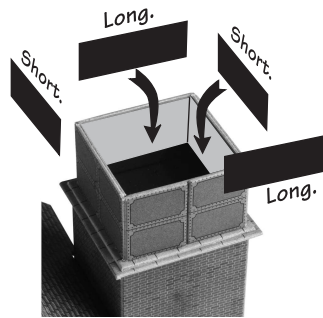
Fig. 24. WATER TANK.

Fit to the tower so that the bottom edges of the tank sit on the second base. Then fold the sides around the black inner tank base.

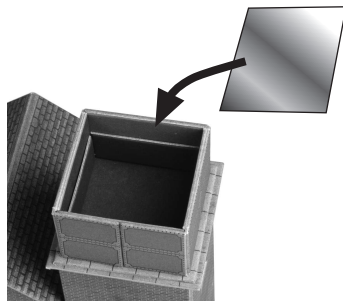
Fold the two dark grey inner side walls over and glue to back of tank outer walls.



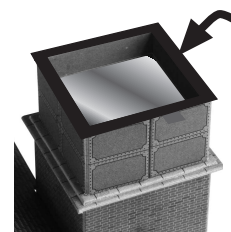
The two dark grey tank inner side sections (located on sheet D) slot inside the tank. at each side of the two inner grey side walls. The one at this end also acts as a brace to hold the joint together.



Water tank lower inner sections located on sheet D. There are 2 x long and 2 x short pieces of black card. These fit up against the inside walls of the tank, pushed down to the base. Fit the two long cards first OPPOSITE EACH OTHER, then fit the two short pieces.



The square piece of clear plastic fastened to the front of this sheet, is pushed down inside the tank until it is resting on top of the short inner walls.



Finally, the tank top located on sheet B is fitted to the top of the tank walls, overhanging equally on all sides.

Fig. 25. CHIMNEY STACK.

Fold the grey tabs over and glue to back of outer wall.

Small brace.

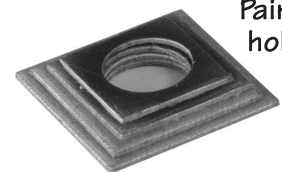
Glue the two large and two small inner brace cards together to make double thickness, then fix the large brace into the slot at the base of the chimney and the small brace into the slot near the top.

Large brace.

When the two braces are fast, fold the chimney sides around and fix.

There are four chimney top stones. Glue them on top of each other. Largest at the base, smallest on top. Centre each one as you stick them down.

Paint inner hole black.



Cut the chimney band into four lengths then attach to the top of the chimney as shown. When fast, trim off the overhanging bits.

Finish off by attaching the top stones.

Fig. 26. INTERCONNECTING BUILDING.

This small ancillary building can be used with this and our other industrial kits to connect buildings together, or simply another entrance.

Fit the window and door with its frame, note, there is no glazing for over the door. Use offcut from glazing sheet.

Fold the walls around the base card as shown, then fix the roof.