

# PO276/7 Low Relief Terrace House Backs

## READ THROUGH ALL THE INSTRUCTIONS BEFORE YOU START.

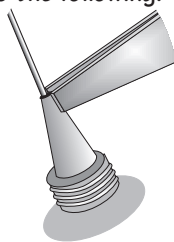
To construct this kit you will need the following:

1. A Modellers knife.
2. A pair of sharp pointed scissors.
3. A steel ruler.
4. Glue - UHU Clear Adhesive is our favourite.
5. A cutting surface - a sheet of card or a cutting mat.
6. Fine point tweezers to hold the smaller components.
7. Water colour paints and a very fine brush, for painting the edges and corners (optional).

### UHU GLUE TUBES

Although the 20ml. tubes of UHU have narrow nozzles, they are still a bit too big, either transfer the glue into a fine tip glue bottle or do the following.

To make the nozzle smaller, put a piece of wire from a medium size paper clip or a large pin inside.



Then with a pair of pliers nip one side of the nozzle tightly, so that it squeezes the soft metal around the pin.

Keep the pin in the nozzle when not in use to stop it from blocking up.

If using the glue frequently, it is not necessary to keep replacing the pin in the nozzle. Simply place the tube upright in an empty cup when not in use.

## GETTING STARTED

### 1 EXTRACTING COMPONENTS FROM SHEETS.

To stop the components from falling off the sheets, they are held secure with scorelines. These are cuts that only go about 75% of the way through the card.

To release them simply run the point of your knife along the scorelines and they will come seamlessly away.

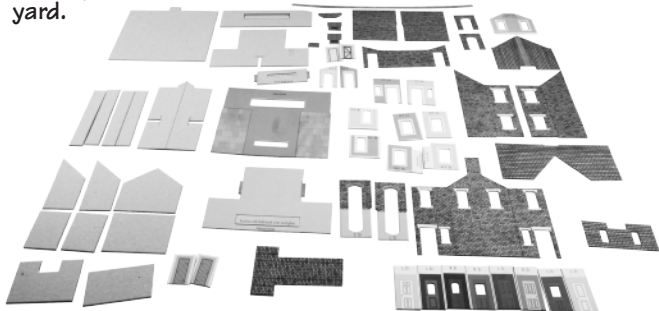
These scorelines are indicated with blue arrows: →

**WARNING,** Cut with care using a knife that is not too sharp, this will reduce the risk of the blade running out of the score and cutting the kit components.

### 2 MAKE YOUR 'BUILDERS YARD'.

This is an area kept away from your working surface, where you store ALL components extracted from the base sheets until needed.

Use a piece of thick card or a tray to make your builders yard.



Your **WORKING** area should have a clean flat surface, and should only contain the kit parts you are working on. **EVERYTHING ELSE SHOULD BE KEPT NEATLY ARRANGED IN THE BUILDERS YARD, UNTIL NEEDED.** PLEASE NOTE: Don't throw anything away. Keep all off cuts and waste card in a box until the kit is finished, just in case you can't find anything, the chances are that it will be there.

# INSTRUCTION SHEET 1

## CHECK LIST

This kit pack should contain the following:

- 2 x SHEET A - Components for house backs.
- 1 x SHEET B - Window frames and roof sections.
- 1 x SHEET C - Extra bits for customising.
- 2 x PLAIN GREY CARD - Interior strengthening parts.
- 1 x GLAZING SHEET.
- 2 x INSTRUCTION SHEETS.
- 1 x RIDGE TILE SHEET.

## Fig. 1. THE WINDOWS

This is a fiddly bit!

Start by cutting out all the plastic window sections.

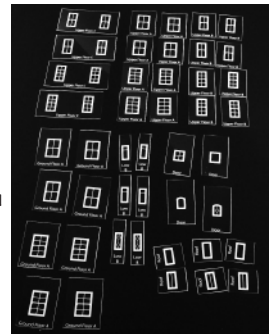
Cut along the thin white lines that mark them out.

Place them on a dark surface so you can see them.

There are multiple options for each window type so keep them grouped together to avoid confusion.

Decide first which style to use.

Fix each of the glazing sheets, matt facing through the openings, to the back of the corresponding inner window and door frames. If you'd like curtains add these now (see fig. 2)



The window frames are coded.

They correspond to the glazing as follows:

Ground Floor A - W.F. 1a & W.F. 2a

Upper Floor A - W.F. 1b & W.F. 2b

Upper Floor B - W.F. 3b & W.F. 4b

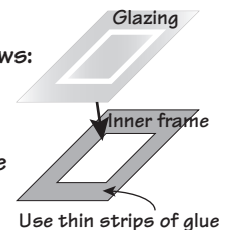
Upper Floor C - Gable end window frame

Low B - D.F. 3a & D.F. 4a

Roof - Shed roof

Door - L.D or R.D.

The frames are colour coded, dark grey being the left side of the house, the light grey the right. The 'a' and 'b' at the end of the code refers to the floor level. 'a' being ground floor and 'b' being the 2nd floor. L.D. are the left hand doors and R.D. are the right hand doors.

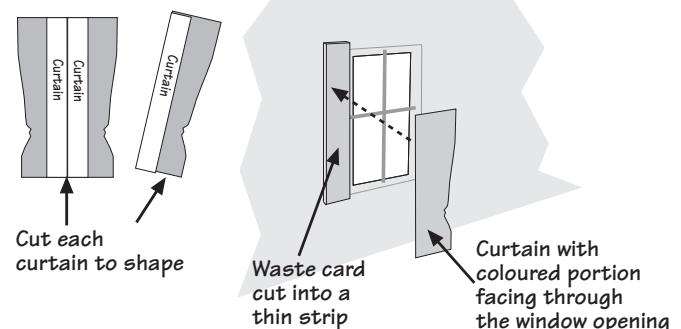


Attach the glazing to all the frames and doors and place back onto the builders yard for later use.

## Fig. 2. CURTAINS

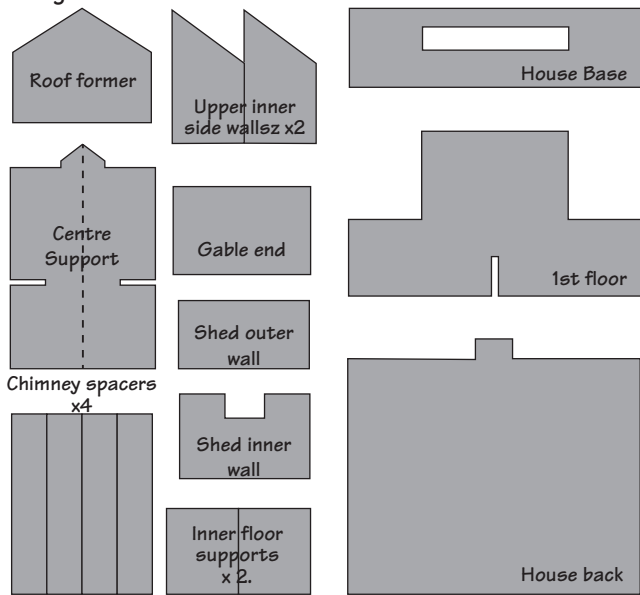
After you have fitted the glazing, if you require curtains or blinds, now is the time to fit them

To fit curtains fix a small strip of waste card to each side of the window, then glue the curtain to the waste card so that it shows through the window (the waste card will space the curtain back from the window a little giving a greater effect of depth).

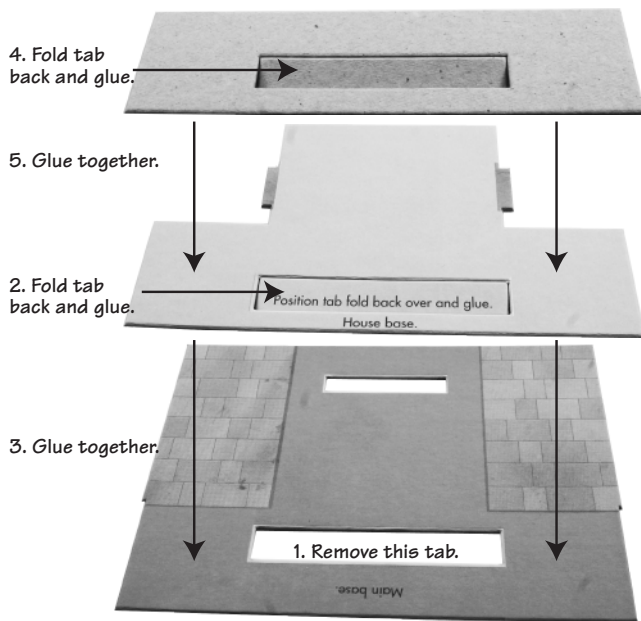


## Fig. 3. INNER WALLS & STRENGTHENERS

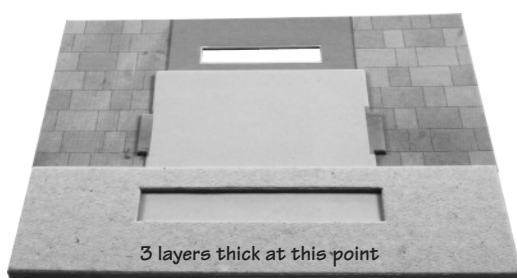
There are two plain grey strengthener sheets included, one for each pair of houses. The plan below labels each strengtheners use.



## Fig. 4. THE BASE

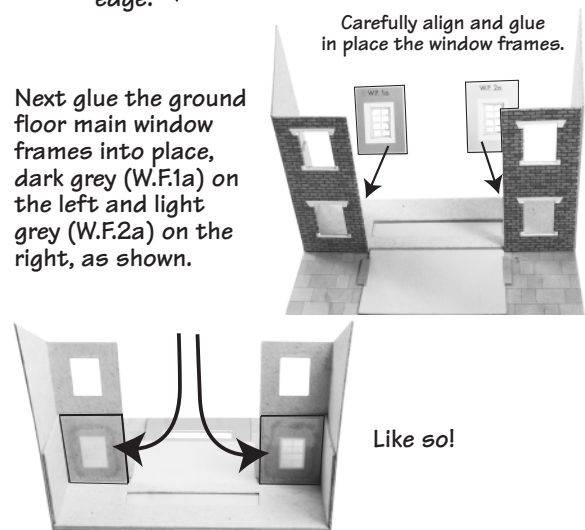
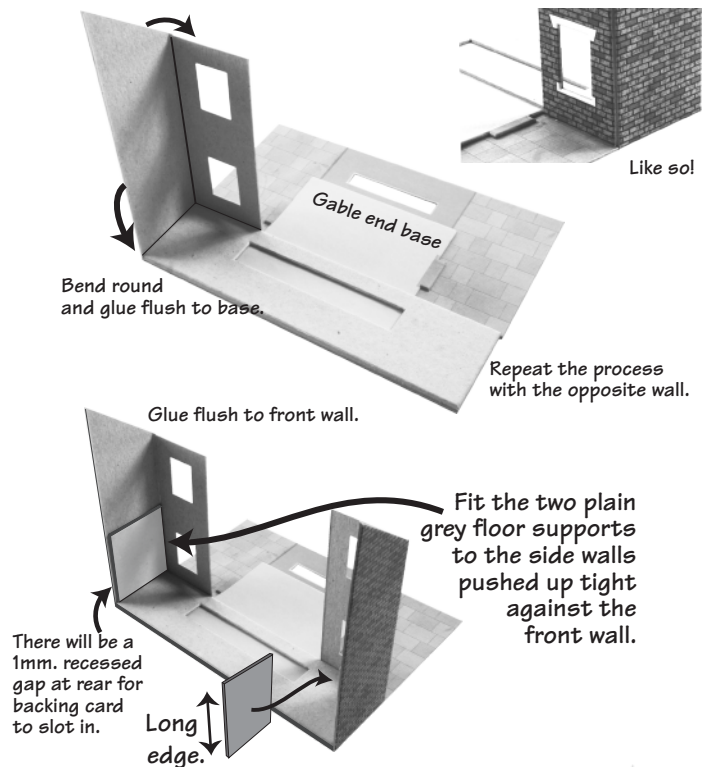


Remove the tabs from the main base, then fold back and glue the house base tab. Then glue the bases together, with the position tab fitting snugly in the base tab space. Repeat the process with the house base strengthener. You will end up with the base looking like the picture below.



## Fig. 5. RIGHT & LEFT MAIN WALLS

On a flat surface position the wall as shown. The side wall fits snugly around to gable end base. Test the position first before applying glue.

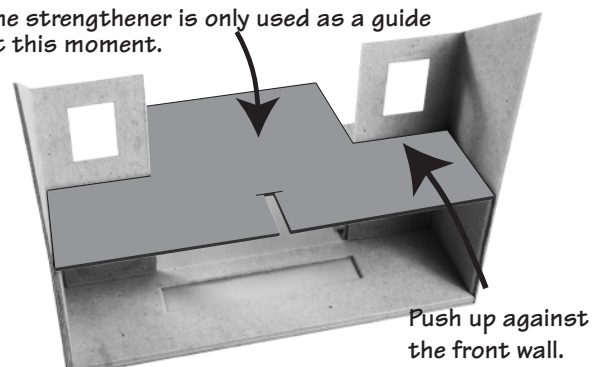


## Fig. 6. GABLE END WALL

Rest the 1st floor strengthener on top of the inner floor supports and window frames.

**DO NOT GLUE IN PLACE AT THIS TIME.**

The strengthener is only used as a guide at this moment.



**Fig. 6. GABLE END WALL continued...**

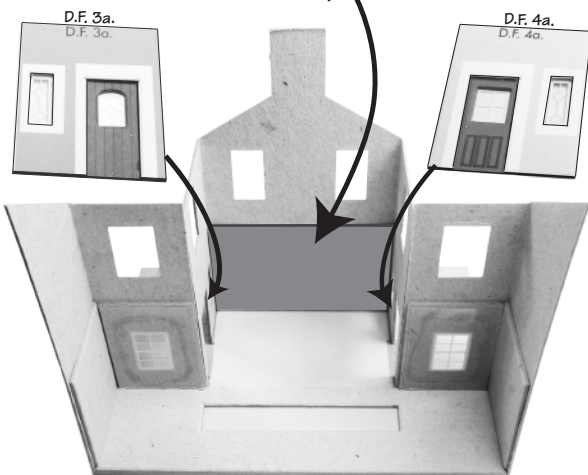
Glue the gable building wall ends onto the front of main house walls.

The Gable end wall fits snugly around the gable base straddling the doorsteps. Test the fit before gluing, as the die cut points may need trimming to fit correctly.

Glue the gable end wall to the base and two front walls. DO NOT glue to the 1st floor strengthener this is only sitting in place to guide the walls as they fold around. Once the glue has set remove the floor strengthener.

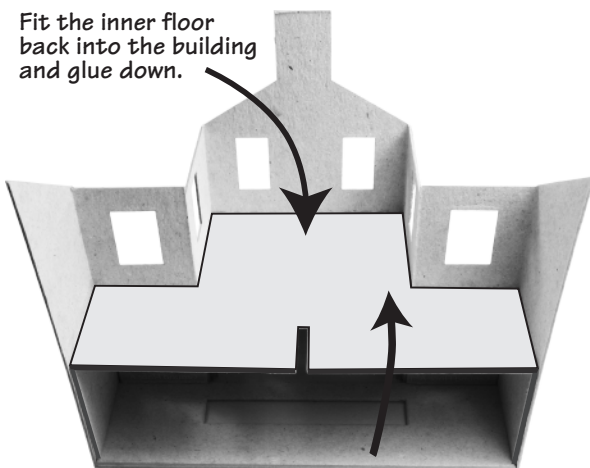
**Fig. 7. GABLE END INNER STRENGTHENERS**

FIRST. Glue the plain grey gable end strengthener into place.



Then attach the two door units D.F. 3a. & 4a. with doors of your choice and glazing already fitted and fast. Fit behind the door openings and position centred.

Fit the inner floor back into the building and glue down.

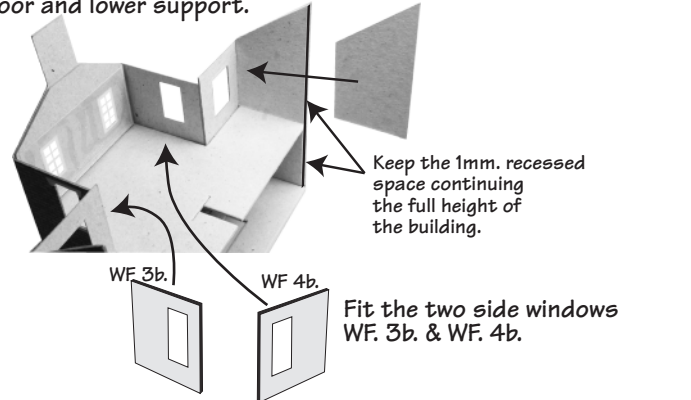


Push floor against front walls so that the back edge lines up with the two lower supports which are shorter than the outer side walls.

**Fig. 8. 1st. FLOOR WINDOWS & STRENGTHENERS**

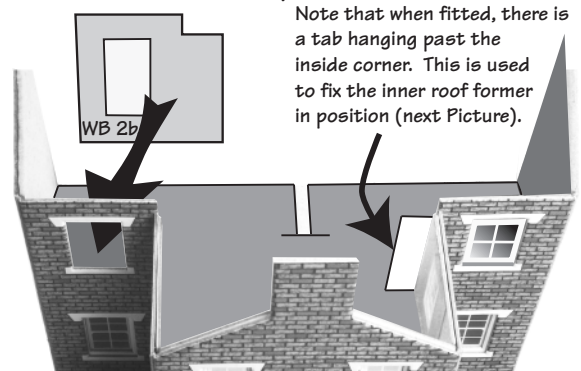
Fit the gable end window frame and glue into place.

Attach the upper inner side walls. Fit sitting directly onto the 1st floor and pushed into the corner so that the back edge lines up with the floor and lower support.



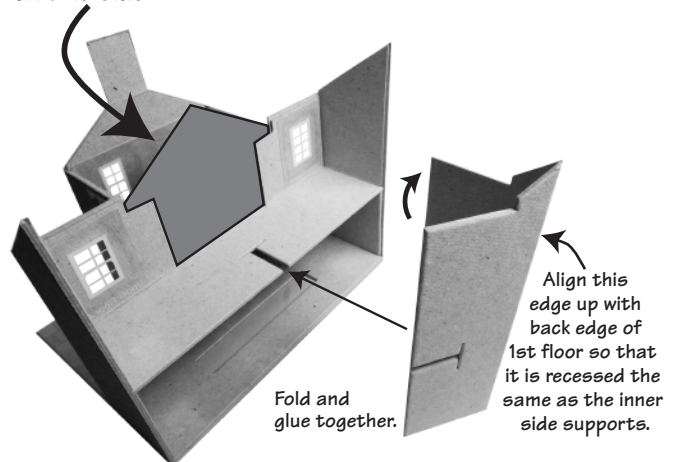
Fit the two side windows WF. 3b. & WF. 4b.

Then align and glue the windows WF. 1b & WF. 2b into place.



Note that when fitted, there is a tab hanging past the inside corner. This is used to fix the inner roof former in position (next Picture).

The roof former slots snugly against the printed side of the 1st. floor main window frames. Make sure it is fitted on this side

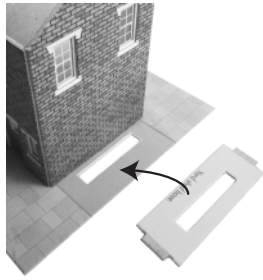
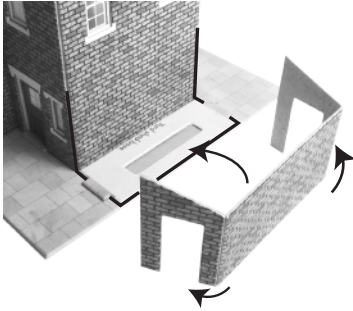


Finally fold in half the centre support and glue to make double thickness. Then slot the support into the corresponding groove on the floor strengthener and glue into place. Again keep the 1mm space at the back like the sides.

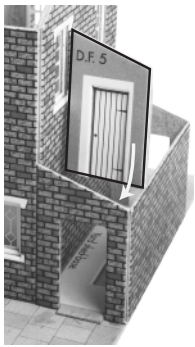


## Fig. 9. YARD SHED

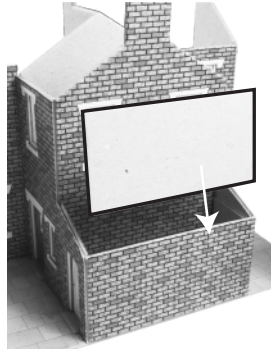
Fold back and glue in place the position tab on the yard shed base, then glue into position at the gable end, the tab fitting snugly into the base.



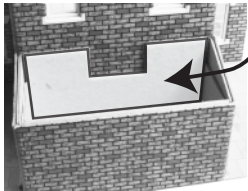
The yard shed walls wrap around the yard shed base and the edges fit snugly into the wall fold in the gable end wall. Check the position before gluing into place.



Next glue into place your choice of shed door into the shed door frame (D.F.5 & D.F.6) and then fix into position within the shed wall. Then repeat with the opposite yard door.



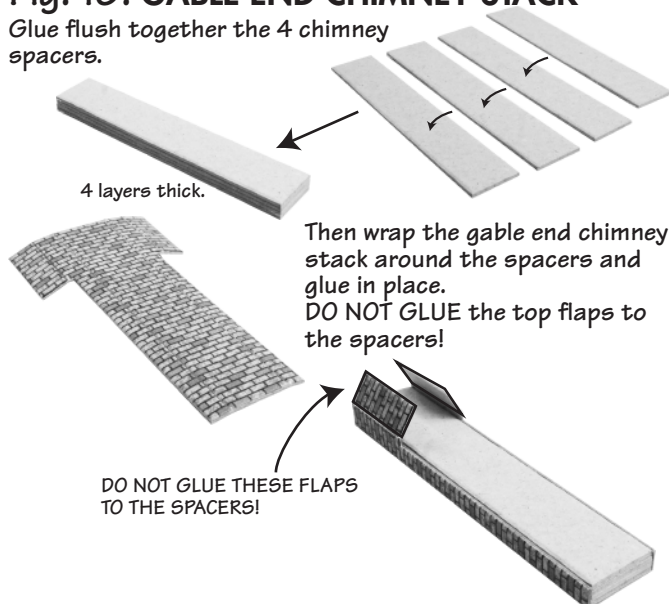
Fix the shed outer wall strengthener to the inside of the shed wall.



Finally position the shed inner wall strengthener into place. This needs to be exactly in the centre, so if need be do not glue into place until you have completed the gable end chimney stack (see fig. 10-11) then use the chimney as a guide to centre the strengthener.

## Fig. 10. GABLE END CHIMNEY STACK

Glue flush together the 4 chimney spacers.



## Fig. 11. FITTING THE CHIMNEY STACK

The chimney slots around the gable end tab and into the shed inner wall strengthener. If you haven't glued the shed inner strengthener into place align and fix before fixing the chimney stack.

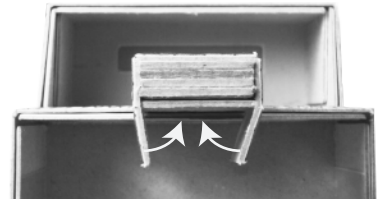


The chimney flaps fit around the gable wall tab...

and slots snugly into the shed strengthener.

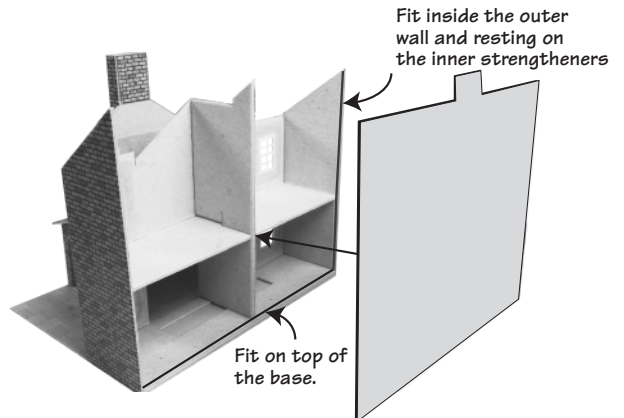


Fold the chimney flaps around the gable end tab and fix into place.



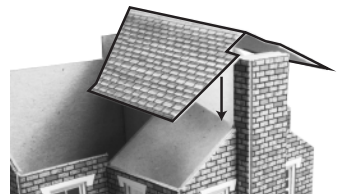
## Fig. 12. ROOF SECTIONS

Start off by fitting the house back strengthener. It fits neatly on top of the base and inside the walls in the 1mm space created by the inner strengtheners.



Glue into place the shed roof, fitting it snugly around the chimney stack.

Next fit the gable end roof. Fold the roof flush around the chimney stack and over the roof former and onto the main house support.



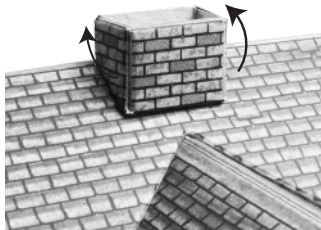
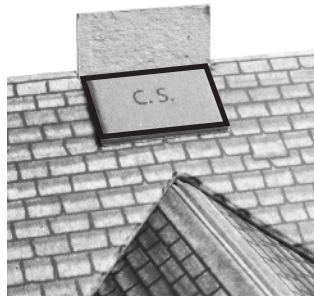
Finally the main roof fits neatly into place over the gable roof. Align the roof flush to the edges and around the house back chimney tab.

# PO276/7 Low Relief Terrace House Backs

## Fig. 13. MAIN HOUSE CHIMNEY

Fix the chimney spacer (C.S.) onto the main roof section centred to the house back tab.

Then wrap around the main chimney stack around the chimney spacer and fix to the house back tab.



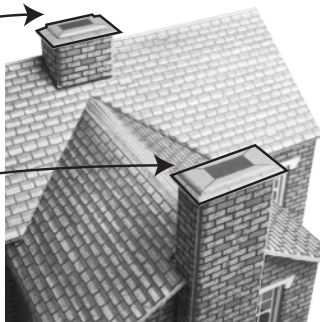
## Fig. 14. CHIMNEY TOPS

Glue the chimney top stones together, C.2 onto C.1. Keep the back edges flush with this set.

Also glue together chimney top stones C.4 onto C.3. This time centre C.4 over the larger C.3.

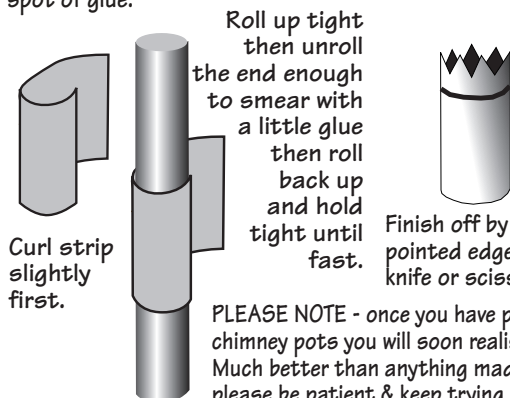
Fix the chimney stones C.1 and C.2 to the top of the main chimney stack.

Then fix the chimney stones C.3 and C.4 to the top of the gable end chimney stack.



## Fig. 15. CHIMNEY POTS

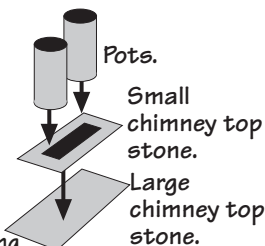
Cut into strips then roll tightly around a nail or screw (apx. 4mm dia.) and fix the end with a tiny spot of glue.



Roll up tight then unroll the end enough to smear with a little glue then roll back up and hold tight until fast.

Finish off by cutting pointed edges with a fine knife or scissors.

PLEASE NOTE - once you have perfected the art of rolling your own chimney pots you will soon realise that they are extremely realistic. Much better than anything made from plastic or white metal. So please be patient & keep trying, the chimney pots make all the difference.

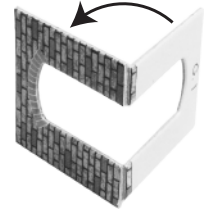
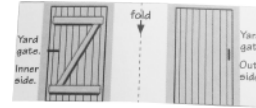


# INSTRUCTION SHEET 2

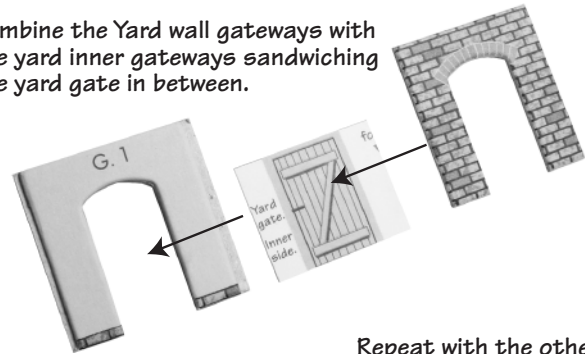
## Fig. 16. YARD GATEWAYS

Fold and glue together the yard wall gateways (G.1 - left hand gateway & G.2 - right hand gateway)

Then choose a yard gate from Sheet C, cut out and fold along the dotted line, glue together.



Combine the Yard wall gateways with the yard inner gateways sandwiching the yard gate in between.



Like so!



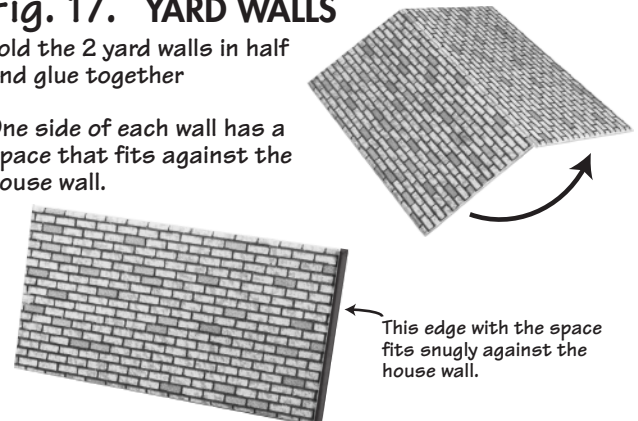
Repeat with the other yard gateway.

The gateway will have one edge with a larger space at one side on the inner gate side. This larger space is to fit against the edge of the yard wall.

## Fig. 17. YARD WALLS

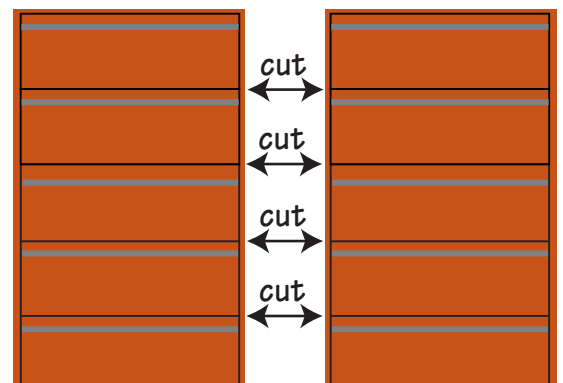
Fold the 2 yard walls in half and glue together

One side of each wall has a space that fits against the house wall.



This edge with the space fits snugly against the house wall.

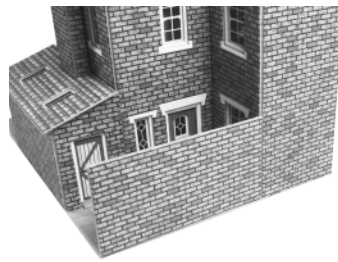
## Chimney Pots (fig.15)





## Fig. 18. YARD

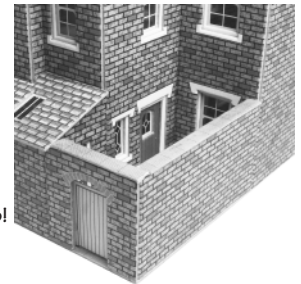
Fix the yard wall along the edge of the house base and flush against the house wall, the inside wall space fitting snugly into the fold of the house corner.



Next cut a strip of the wall capping stones and glue in place on the yard wall top.



Like so!



Align the yard gateways to the correct side, the larger inner space lining up with the yard wall, the smaller space slots into the fold of the shed wall corner.

smaller space  
larger space

## Fig. 19. FINISHING TOUCHES

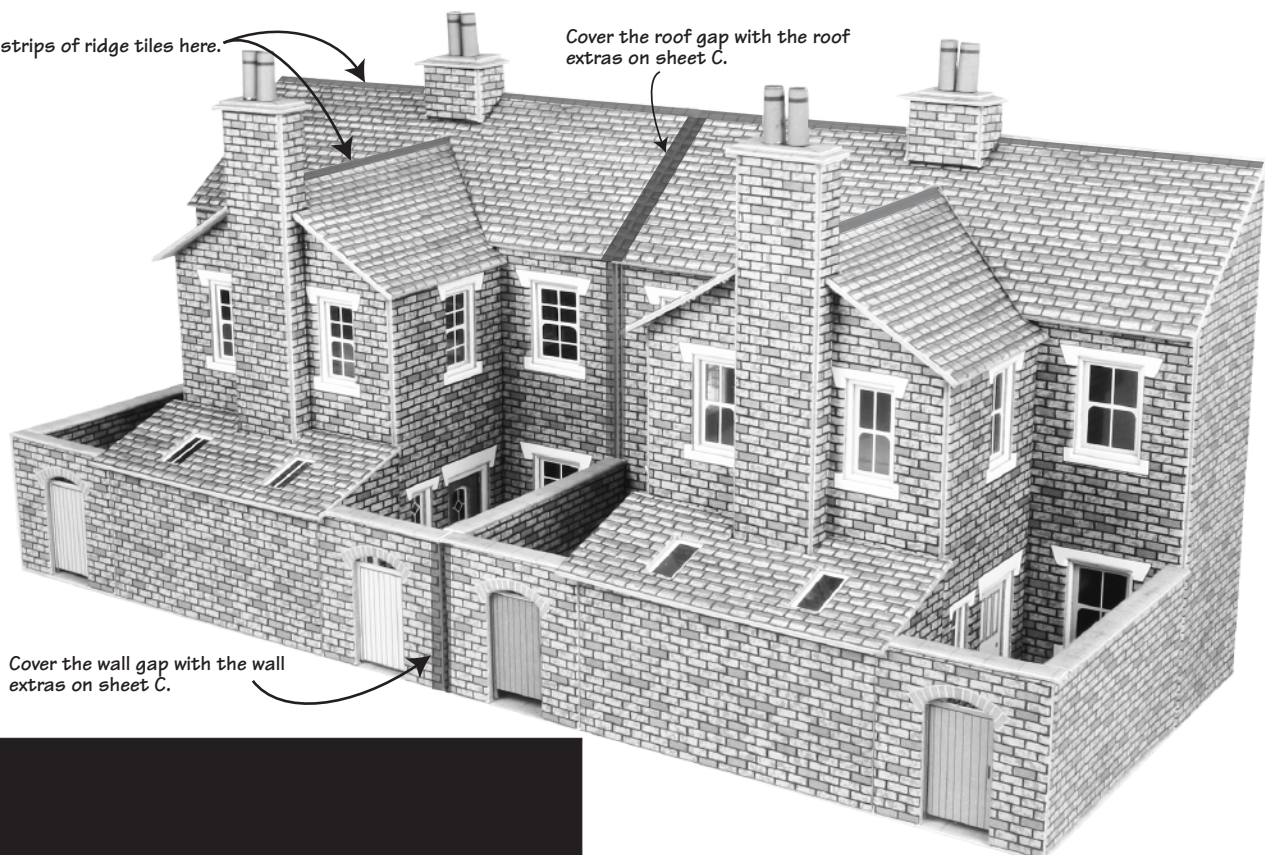
Use a strip of the ridge tiles to finish the roof sections, just cut a strip to the required length and fold along the centre score line, then fit to the roof section along the ridge.

Use a strip of the brick work from Sheet C to cover the gap between the terrace houses, repeat the process with a strip of roof work for the roof sections.

If you'd like to paint the card edges and fold line of the buildings use a fine brush and water colour paints, test the colour of a bit of waste card before applying to the model.

Apply strips of ridge tiles here.

Cover the roof gap with the roof extras on sheet C.



Cover the wall gap with the wall extras on sheet C.