

PO374 00 Scale Low relief Shop Front 'No7. High Street'.

INSTRUCTIONS

PLEASE - PAY ATTENTION

Read through the instructions and familiarise yourself with the kit components before you start any building.

You must follow these step by step instructions carefully to make this wonderfully detailed kit.

Kit components.



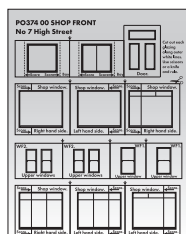
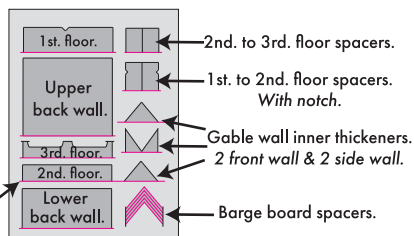
SHEET A.

All the printed components to make this kit.

SHEET B.

A thick grey card with inner floors and other strengthening components.

Lines indicated here in red are the cut lines to extract components from base sheet.



GLAZING SHEET

Clear plastic glazing to fit behind the window openings. There are a few different styles of shop and bay windows, not just for choice but just in case you mess up the score lines.

WINDOW DISPLAY SHEET SHEET C.

A small card sheet with cut out and insert window and shop rear wall displays.



INSTRUCTION BOOKLET (this one)

1 Tools to build this kit.

To build this kit you will need a few basic tools:

1. A modellers knife.
2. A cutting surface - A cutting mat or a sheet of thick card will do.
3. A sharp pair of scissors
4. A steel ruler.
5. Fine point tweezers.
6. Something to clamp surfaces together, Bulldog clips are good for this job.
6. METCALFE Ultra Fine Tip Glue Bottles (see 3)

2 Glue.

We recommend using a combination of two types of glue: **Speed Bond** and **Rocket Card Glue**.

Both are made by Deluxe Materials - www.deluxematerials.com

Rocket Card Glue is an instant and fast drying glue, great for where you need stuff to stay just where you place it.

Supplied with its own fine tip applicator.

Speed Bond is slightly slower drying, ideal for where a little positioning is required as you build.



3 Ultra Fine Tip Glue Applicators.

An absolute 'must' when building this kit. When used with Speed Bond perfect amounts of glue can be applied to very precise areas without any mess.



Speed Bond in an applicator was used to build most of this kit.

A METCALFE product supplied in packs of 3
Product code MT907
Glue not included



4 Extracting components from base sheets.

To stop the components falling off the base sheets, they are held secure with score lines (marked with blue arrows) that cut about 75% of the way through the card. →

To release them run the point of your knife along these score lines and they will come seamlessly away.

WARNING, Cut with care to reduce the risk of the blade running out of the score and cutting the component.

5 Make your builders yard.

As you extract the components from the base sheets they need to be kept away from your working area on a thick piece of card or a tray until needed.



Example of builders yard.

Extract all the components from the printed SHEET A and the Grey card B. Place neatly in your builders yard as shown here.

DON'T throw away the waste card bits yet, you will need them for minor patching and strengthening later.

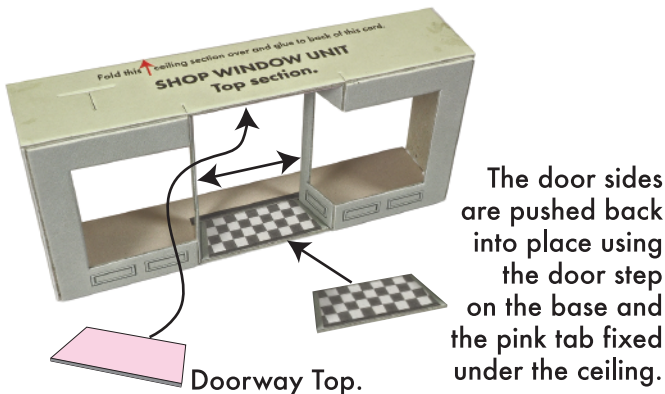
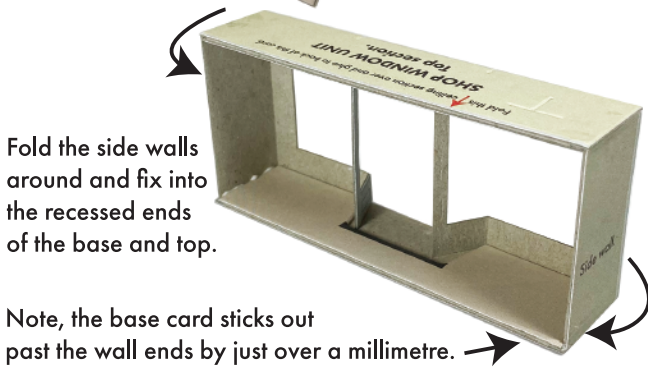
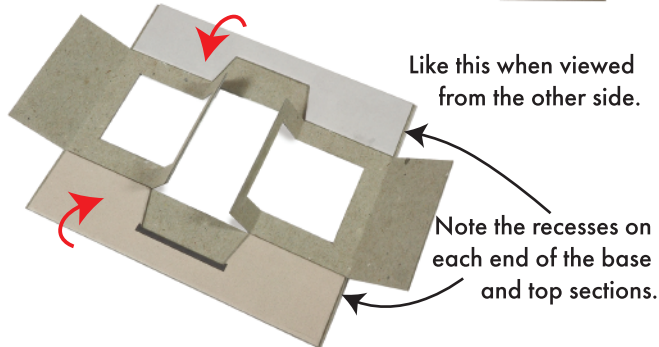
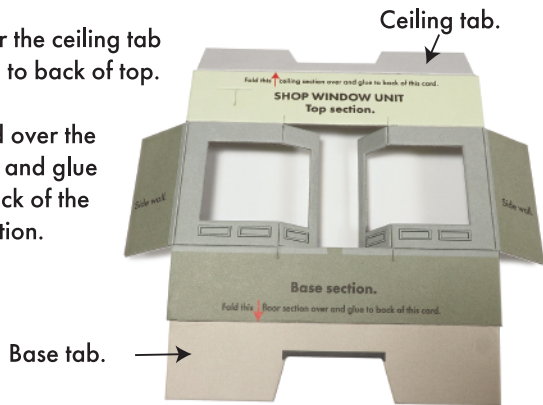
Also carefully cut out all the glazing pieces and place safely in a corner of the builders yard.

Make sure you cut then accurately along the outer white lines indicated.

6 The Shop Window Unit.

Fold over the ceiling tab and glue to back of top.

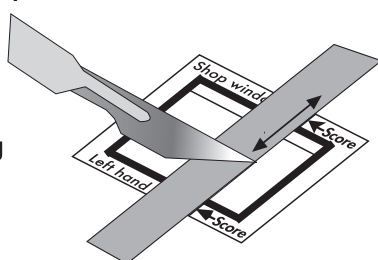
Then fold over the floor tab and glue to the back of the base section.



7 Shop Window Glazing.

Choose your window style and take the right and left hand glazings.

Then lightly score on the front side along the lines indicated at the top and bottom of the glazing.

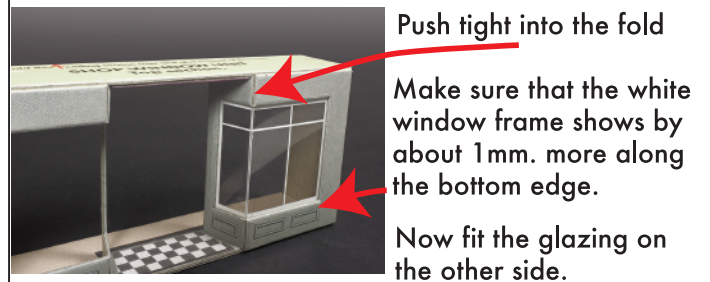
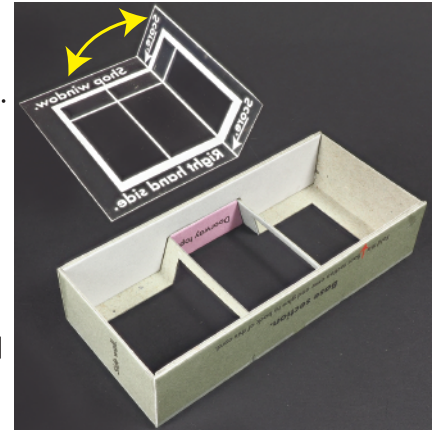


You will then be able to bend the window to fit the shape of the window frame.

The glazing is fitted into the back of the frame.

Test without glue first so you can see if the angle is correct.

Tiny spots of glue along the top and bottom edges are all that you need.

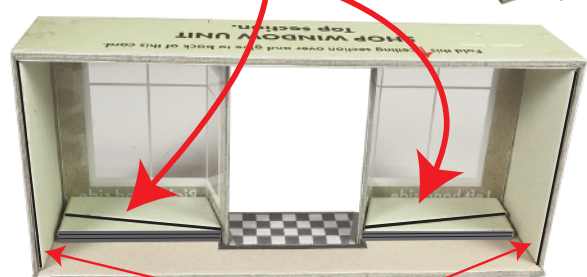
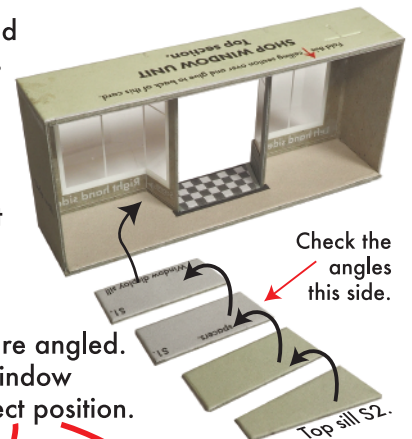


8 Interior of Window Unit.

The display sills build up using four layers of card. (S1.)

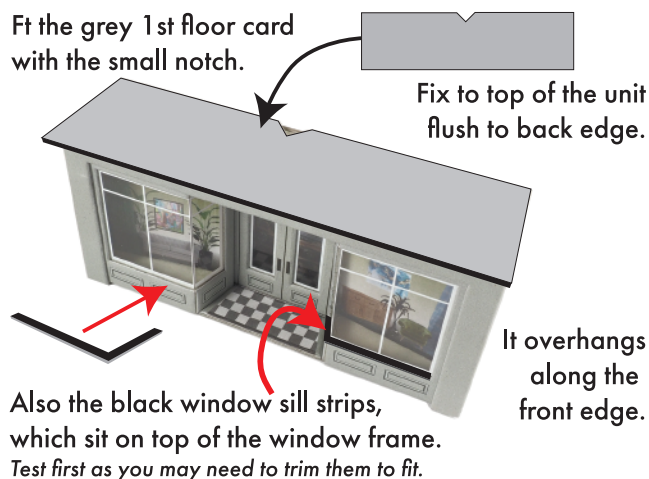
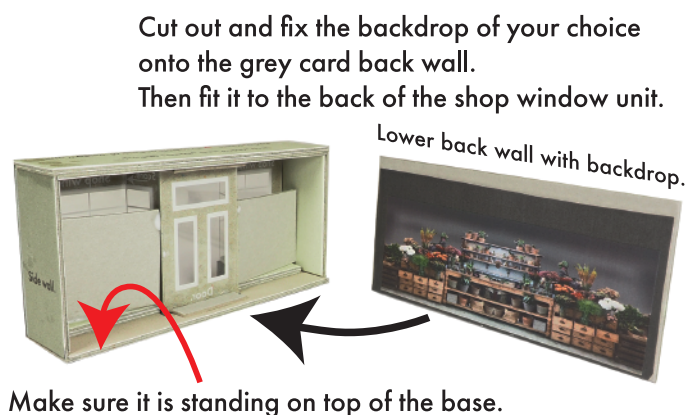
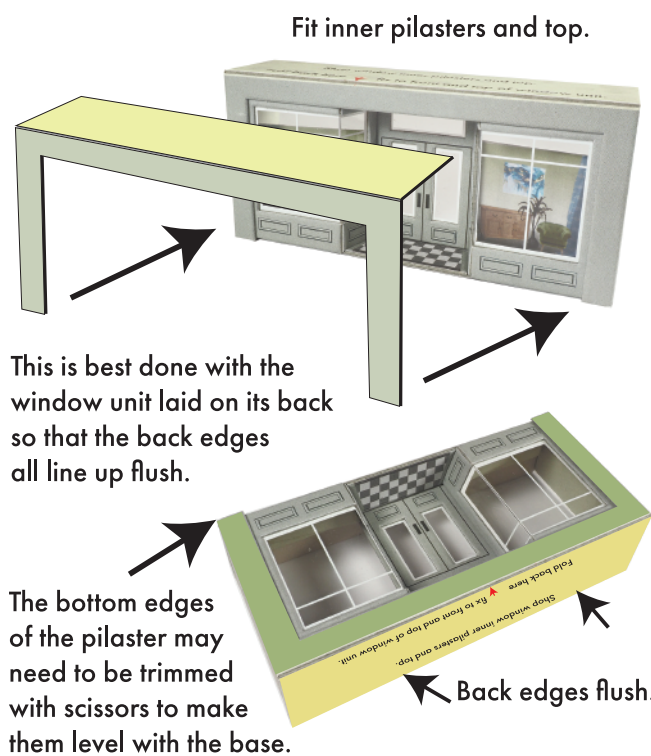
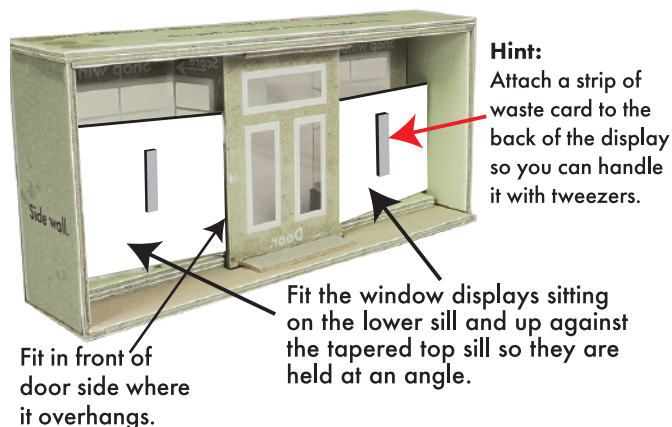
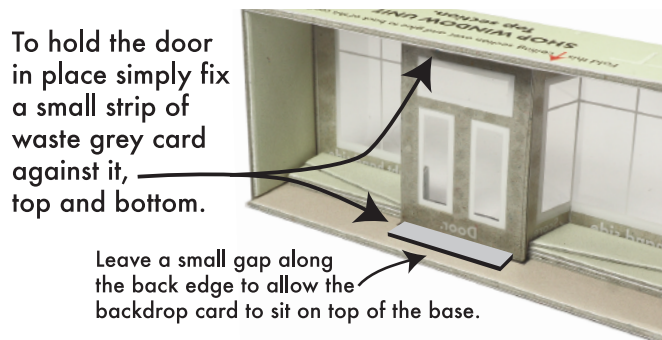
Fix each sill on top of one another pushed tight to front and doorway side.

Note: The top sills are angled. This is to hold the window displays in the correct position.



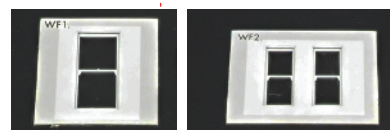
Fit the two side walls (SW1) push tight to front wall.





9 Upper Windows.

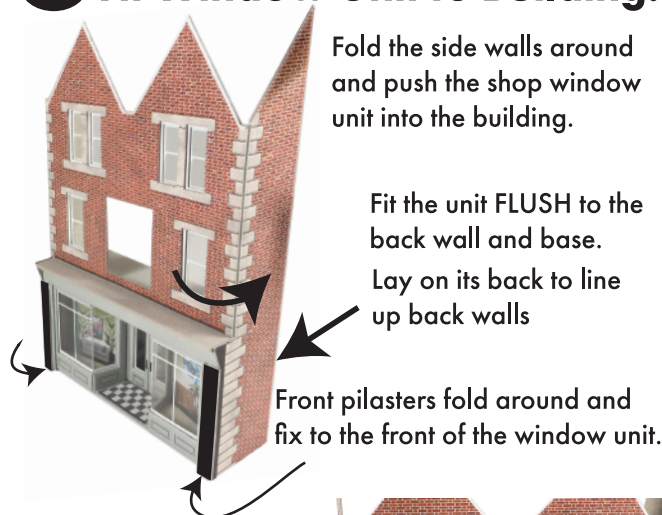
Fix the glazings to the back of the window frames WF1. and WF2.



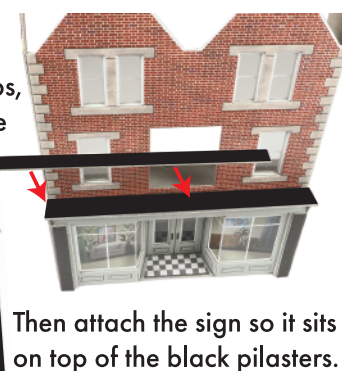
Lay glazing flat on work surface and place tiny spots of glue down each side, then lower the frame down on top. Position the frames in the centre of the opening.

Lay the completed window flat on your work surface. Place the wall with appropriate opening over the top. Slide to the correct position and press firmly down to fix.

10 Fit Window Unit to Building.

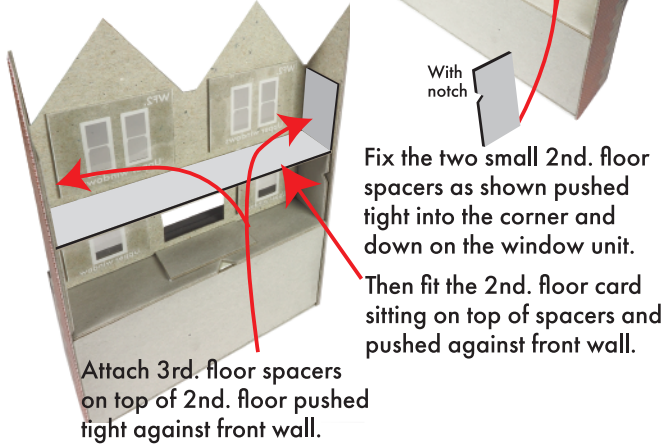


Fix the black sign top strips, wide one first, narrow one on top.



11 Inner floors.

Fix a small piece of waste card on to the top of the window unit pushed up against the back of the wall to stop it bowing in later. Leave a gap on back edge here for the back wall to sit on.



Fit the gable inner thickeners to the back of each gable as shown

The gable thickeners need to be flush with wall tops, they make gluing the roofs on a lot easier.

3rd. floor sitting on top of spacers pushed against front wall.

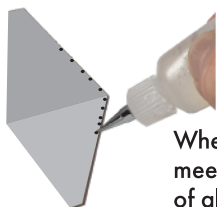
At each stage make sure the floors and spacers are pushed in far enough to leave a recess down the back of the gable walls to allow the back wall to fit inside the building.

12 Roof.

Black lines are guides for fixing the two gabled roofs

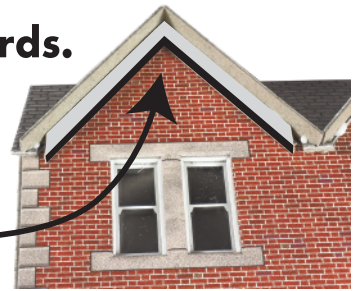


Position the point of the roof one slate down from the top edge of the main roof.



13 Barge Boards.

Fix two grey barge board spacers, one on top of the other onto the wall and fixed tight up under the overhanging roof

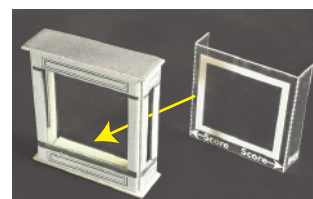
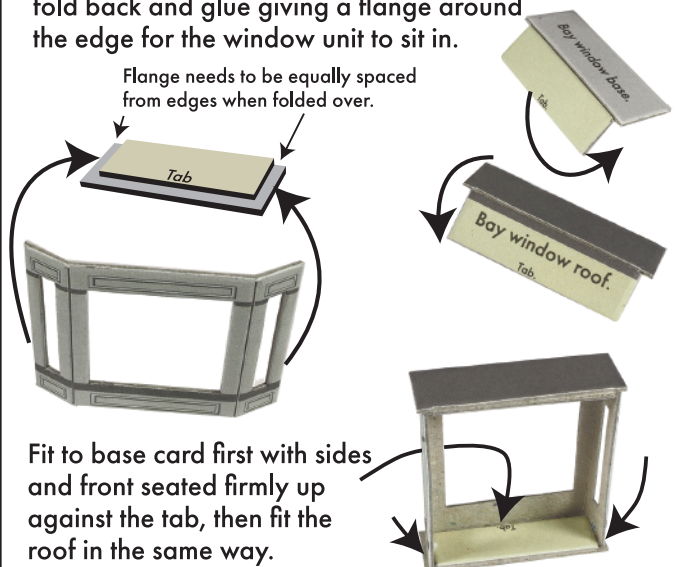


The barge boards fix on to the front edge of the spacers also pushed tight up against the underside of the overhanging roof.

14 Upper Bay Window.

The bay window base and roof both have tabs that fold back and glue giving a flange around the edge for the window unit to sit in.

Flange needs to be equally spaced from edges when folded over.



Score and fold the sides of the glazing at right angles to fit inside the bay window. Fix with just a spot of glue on the front edges.

Fix tiny strips of waste grey card to the inside edges to give it a better gluing surface when fitted to the building.



Finally, fit the small black bay window roof top card.

