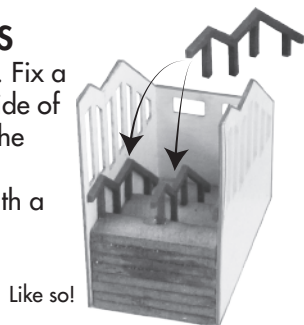


Fig. 3 - HAND RAILS

Next affix the handrails. Fix a handrail against the inside of each wall and 1 down the middle of the steps.

This step is best done with a set of tweezers.

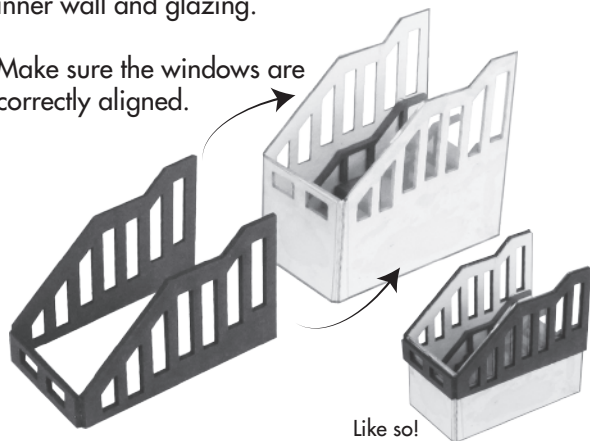


Like so!

Fig. 4 - OUTER WALL

Now glue the outer brown wall around the cream inner wall and glazing.

Make sure the windows are correctly aligned.



Like so!

PN816 N SCALE PLATFORM UNDERPASS INSTRUCTION SHEET 1

CHECK LIST

This kit pack should contain the following:

- | | |
|---|-------------------|
| 1 x CREAM SHEET | } Kit components. |
| 1 x GREY SHEET | |
| 1 x BROWN SHEET | |
| 1 x STRENGTHENER | |
| 1 x CLEAR GLAZING - clear plastic sheet | |
| 2 x INSTRUCTION SHEETS | |

READ THROUGH ALL THE INSTRUCTIONS BEFORE YOU START.

To construct this kit you will need the following:

1. A Modellers knife.
2. A steel ruler.
3. Glue - UHU Clear Adhesive is our favourite.
4. A cutting surface - a sheet of card or a cutting mat.
5. Fine point tweezers to hold the smaller components.
6. METCALFE UltraFine Tip Glue Bottle (Code: MT907)

GETTING STARTED

1 EXTRACTING COMPONENTS FROM SHEETS.

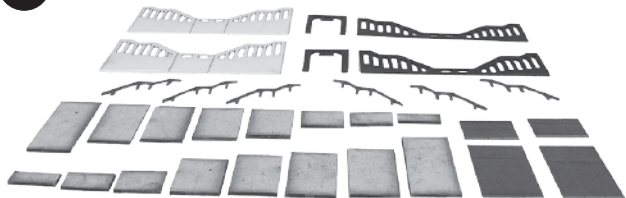
CAUTION: The components are delicate take great care when removing them from the base sheets.

To stop the components from falling off the sheets, they are held secure with small score points.

To release them simply run the point of your knife along the score lines and they will come seamlessly away.

Then very carefully push out the components.

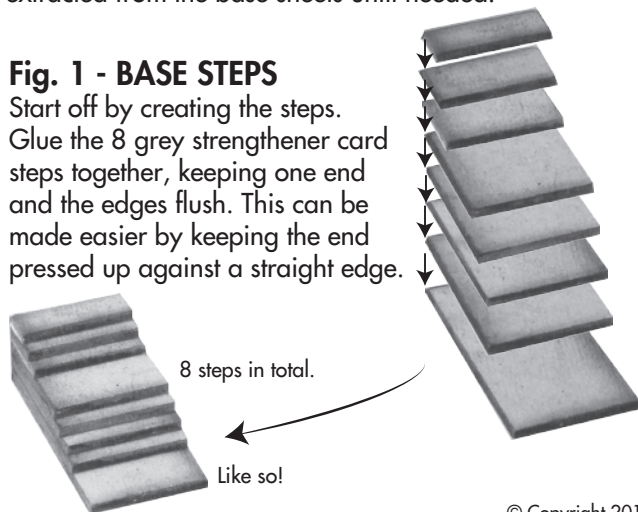
2 MAKE YOUR 'BUILDERS YARD'.



This is an area, a tray or thick piece of card, kept away from your working surface. Store ALL the components extracted from the base sheets until needed.

Fig. 1 - BASE STEPS

Start off by creating the steps. Glue the 8 grey strengthener card steps together, keeping one end and the edges flush. This can be made easier by keeping the end pressed up against a straight edge.



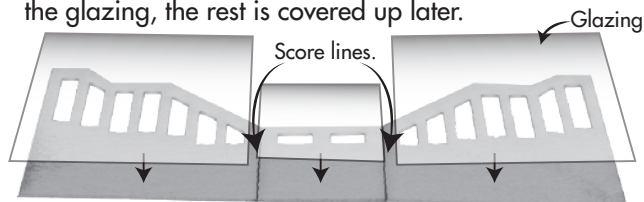
8 steps in total.

Like so!

© Copyright 2014.

Fig. 2 - INNER WALLS & GLAZING

Next cut out some squares from the clear plastic glazing and glue to the **outside** of the cream wall, leave gaps where the score lines are. This doesn't have to be neat, as long as the windows are covered with the glazing, the rest is covered up later.



Once the glazing has fully set. With scissors, trim off the excess flush to the underlying wall section.



Next glue the inner wall around the steps, keeping the inner wall flush to the edge of the steps. At this stage the glazing will be on the outside of the partially completed model.

Metcalf Models and Toys Ltd. Bell Busk, Skipton, N. Yorkshire, BD23 4DU.

PN816 PLATFORM UNDERPASS

INSTRUCTION SHEET 2

Fig. 5 - ENTRANCE WAY

Carefully align and glue into place the entrance way. This sits flush with the outer brown wall, and completes the outer 'ridge' that will fit flush on top of the platform surface.

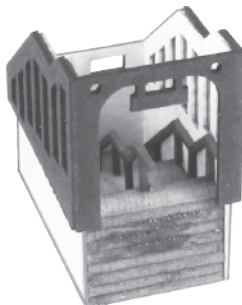


Fig. 6 - ROOF

First affix the lower section of the roof, then fix the top section into place.



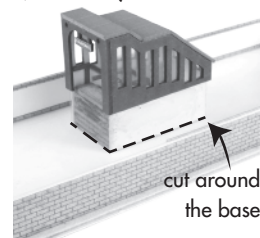
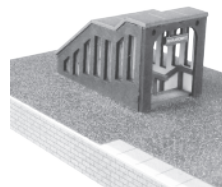
Lower section first.



Then the top section.

Fig. 7 - FIXING TO PLATFORM

To fix to the platform (PN110/PN135) turn the platform over and cut around the base of the underpass and remove the tarmac from the platform.

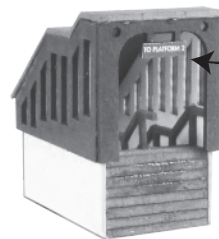


cut around the base.

Turn the platform back over and the underpass slots neatly into the created space.

Fig. 8 - SIGNS

Lastly choose and carefully cut out one of the small signs below and glue into place on the hanging sign in the underpass entrance.



Fix sign carefully into place.



© Copyright 2014.

Metcalfe Models and Toys Ltd.
Bell Busk, Skipton, N. Yorkshire, BD23 4DU.